

STUDIO  
ONE  
—  
TOI TŪ

WHAT'S ON  
—  
JUL - SEP 2026

PROGRAMME

3

KIA ORA KOUTOU,  
NAU MAI HAERE MAI KI  
STUDIO ONE TOI TŪ!

WE HAVE A HUGE LINEUP  
OF CREATIVE EVENTS  
THIS WINTER, INCLUDING  
EXHIBITIONS, TALKS,  
AND EVENTS. CELEBRATE  
MATARIKI FESTIVAL,  
HERITAGE FESTIVAL  
AND MUCH MORE!

JOIN US THIS WINTER TO  
VISIT, CREATE, MAKE AT  
STUDIO ONE TOI TŪ.

# FIND OUT MORE

The creative precinct at Studio One Toi Tū is a hub for making. At the intersection of arts and community, it is a place to meet, exchange, grow, learn and join a neighbourhood of creative activity at 1 Ponsonby Road.

If you would like to receive details of upcoming events and programmes, like our Facebook page, follow us on Instagram, visit our website or email us to subscribe to our newsletter.

09 376 3221  
info@studioone.org.nz  
studioone.org.nz

facebook.com/studioonetoitu  
instagram.com/StudioOne.ToiTu

#VisitCreateMake  
#HirePlayShow  
#StudioOneToiTu

## LOCATION

—  
1 Ponsonby Road  
Auckland, New Zealand



# CONTENTS

<b>ARTIST PROFILE</b>	<b>P. 8 - 11</b>
<b>OPEN</b>	<b>P. 12 - 19</b>
<b>SHOW</b>	<b>P. 20 - 29</b>
<b>MAKE</b>	<b>P. 30 - 43</b>
—	
<b>ADULTS</b>	
CERAMICS	P. 32 - 35
TERRARIUM & CANDLE MAKING	P. 36
PAINTING & DRAWING	P. 37
PRINTMAKING	P. 38-39
—	
<b>KIDS, TEENS</b>	<b>P. 40 - 41</b>
<b>SCHOOL HOLIDAYS</b>	<b>P. 42 - 43</b>
—	
<b>INFORMATION</b>	<b>P. 44</b>
<b>HIRE</b>	<b>P. 45 - 47</b>

# HIRE, PLAY, SHOW



## VISIT, CREATE, MAKE

With opportunities for individuals and community groups through to experienced professionals, we offer a range of studio spaces for hire, offering you a place to workshop an idea, learn a new technique or sharpen your skills.

Become a part of the creative community at Studio One Toi Tū by applying to be a part of our exhibition programme, work with us as a tutor, or hire our space.

## STUDIO SPACES

---

We have a range of studio options and are one of the few precincts in Auckland to offer access to 'messy' workshops suitable for ceramicists, sculptors and object makers. We also offer a number of open studio spaces that can be hired individually or collectively for making, meetings, workshops or temporary events.

We are located in the heart of central Auckland with free wi-fi, kitchen facilities and the possibility for 24-hour access. Contact us to find out how we can support you.

## WORKSHOP HIRE

---

Studio One Toi Tū has two 'messy' workshops that can be hired at an hourly rate with access to our ceramic and printmaking equipment. If you have a project and need that extra space to make it happen, this is the option for you.

Contact Studio One Toi Tū to find out more information and check the availability of our studios, gallery and spaces for hire.

## CALL FOR TUTORS

---

Studio One Toi Tū welcomes new and engaging course and workshop proposals from all creative disciplines, ranging from drawing, taxidermy, weaving and printmaking. Courses and workshops can be aimed at adults, youth or proposed as part of our school holiday programme.

Successful tutors are supported through resources available at Studio One Toi Tū, including the use of fit-for-purpose studios and workshop rooms.



## CALL FOR RESIDENCY

---

Our Emerging Artists Residency programme is open to applicants once a year. We select two projects annually. This annual opportunity offers successful applicants with a residency stipend, rent free studio space onsite with 24 hour access, and support through Studio One Toi Tū's resources, networks, and mentoring. Each residency concludes with a final exhibition, offering artists the chance to share their work with the community. Our next call out is planned for August. Keep an eye on our social media for more info.

## CALL FOR EXHIBITIONS

---

Do you have a great idea for an exhibition? Are you looking for a centrally located gallery to show your work? Do you have a group show ready but just need the space? We want to hear from you.

Studio One Toi Tū welcomes innovative approaches to creative practice and offers opportunities for you to be a part of our diverse exhibition programme in 2027. The four ground floor galleries and Sidewalk Gallery can accommodate various visual art practices and are available for hire through the annual call for proposals opening on Mon 1 June and closing midnight on Sun 28 June.

For more information about submitting your proposal contact us on [info@studioone.org.nz](mailto:info@studioone.org.nz)

WHEN 1 JUN - 28 JUN

INFO [TINYURL.COM/SOTT2027](https://tinyurl.com/sott2027)



PHOTO: ABIGAIL DELL'AVO, 2026



EXHIBITION: AMRIT KAUR, HOMEBOUND 2026

# ARTIST PROFILE

---

LAI LAM

---

WEAVER AND MAKER

[WWW.LITTUCOCOON.CO.NZ](http://WWW.LITTUCOCOON.CO.NZ)

CAN YOU START BY TELLING US A LITTLE BIT ABOUT YOURSELF?

---

Born and raised in Hong Kong, I have a mixed background in graphic design, marketing, and communications. In 2004, I immigrated to New Zealand with my husband and daughter and began my Master's degree in Library and Information Management. For more than two decades, I worked as a librarian, and later a lecturer, before retiring in 2022.

My fibre journey started shortly after I arrived in Auckland. A flyer from the Auckland Handweavers and Spinners Guild at the community library caught my eye – it was as if I had waited my whole life to learn all those things that had fascinated me since childhood.

WHERE DID YOUR INTEREST WITH TEXTILES AND FIBRE FIRST BEGIN?

---

Family stories about my grandfather selling pre-wound warps in the 1940's; watching a neighbour handspin sewing thread; my mother demonstrating how to strip fibres from wild ramie plants in Hong Kong – these are some of my early memories.

My textile interest started in my early teens, mainly through books and documentaries. With my pocket money, I bought my first weaving book at 14. The first time I learned to weave was at a tapestry workshop in 1996, at the local Art Museum in Hong Kong. I still keep in touch with the Irish teacher since that time.



## WHAT ROLE DOES SLOW-MAKING OR HANDCRAFT PLAY IN YOUR WORK?

—

Sadly, slow-making has become a disappearing way of life. Everything was bought somewhere when I was growing up. Whenever I mentioned my hobby to relatives in China, their reaction was always “Why bother?” While researching ramie, I discovered that despite being such an ancient craft in the CJK (China, Japan and Korea) countries, many artisans are finding it hard to maintain their tradition.

For me, slow-making is meditative. I am inspired by various backstrap weaving cultures around the world. It was eye-opening to see that you only need a few dowels and a strap to weave. After a few trips to northern Thailand to learn from indigenous Karen weavers, this has become my signature style.

## WHAT DO YOU ENJOY MOST ABOUT WORKING IN YOUR STUDIO?

—

Next month will be my first anniversary since moving into this lovely space that is now my second home. My husband helped me set up the room – a bookshelf and rug once in storage; a low table that suits me perfectly as I like to sit on the floor. This cozy space is now filled with books, tools, gadgets, and a huge stash.

My daughter, a hobby photographer, comes and takes pictures of my work. I enjoy interacting with my neighbours and the staff next door. Friends often turn up and we share food and laughter. I feel very blessed to be surrounded by all these lovely people.





IS THERE A DIRECTION OR MATERIAL YOU'D LIKE TO EXPLORE MORE IN THE FUTURE?

—  
Fascinated by ideas and all those “what if’s”, I often use forage materials or spin my own yarn. With a particular obsession with plant fibres such as linen, ramie, and hemp, I especially enjoy weaving tea-towels. My dream is to weave enough to last my whole life. Although retired, I continue to do freelance research. My last piece was for the TinyStudio craft magazine about ramie, a fibre I am in love with and used extensively in my work.

I hope to go to Taiwan next year to learn ramie spinning and weaving from the indigenous weavers there.

Lately, I have also been playing with paper: dictionary, tissue wrapping and brown paper bags, etc. I'm currently in the middle of researching and writing about paper spinning, another fascinating topic.

OPEN



# CREATIVE TALKS, POP-UPS AND EVENTS



## MAKE IT HAPPEN HERE

From creative conversations to pop-up exhibitions, there's always something happening at 1 Ponsonby Road. If you require a studio for a project or workshop, would like to showcase your work or are in need of a venue to host a special event, contact us to discuss the opportunities available for you at Studio One Toi Tū.

## MATARIKI FESTIVAL

### MATARIKI I TE PŌ | MATARIKI AFTER DARK

Join us for a special evening of creativity, connection, and celebration to welcome the Māori New Year.

Experience six contemporary exhibitions and artist talks. Enjoy hāngī, refreshments, music, performances, and hands-on artmaking workshops for all ages.

This event is free and open to all.  
Nau mai, haere mai.  
More details coming soon!

WHEN     SAT 11 JUL  
           6 - 9PM  
COST     FREE  
INFO     STUDIOONE.ORG.NZ

### THE NINE WHETŪ

—  
SARA MOANA

—  
*The Nine Whetū* by Sara Moana (Ngāti Tamaoho, Tainui) is a playful series illustrating each of the nine stars celebrated during Matariki. A whimsical, witty approach that explores both the interwoven, collective significance of Matariki in Aotearoa, and the plentiful ways in which each star helps navigate our lives during a time of reflection, whanaungatanga and well-being as we look above.

ROOM 10  
MON 13 JUL - SAT 25 JUL

OPENING EVENT  
SAT 11 JUL, 6 - 9PM



## WEAVING WORKSHOP

### TE WHAEA WITIKA

Join Te Whaea for weaving workshop that brings the tradition of raranga to life. Guided by her expertise, you'll learn the fundamentals, tikanga and artistry of weaving while creating your own piece to take home.

AGE 12+  
WHEN SAT 18 JUL  
11AM - 12PM  
COST FREE  
CLASS 10 MAX  
ENROL [STUDIOONE.ORG.NZ](http://STUDIOONE.ORG.NZ)

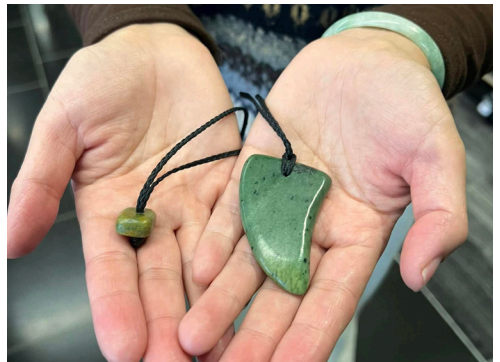
## POUNAMU REI NIHO TOOTH PENDANT WORKSHOP

### AOTEAROA BONE AND STONE

Join us for an immersive workshop exploring the traditions of Rei Niho Parāoa/Tohorā, pendants made from whale teeth. These taonga, with roots in Eastern Polynesia, connect us to the first adventurers who voyaged to Aotearoa.

In this hands-on experience, you will learn the art of crafting contemporary Pounamu whale teeth pendants, inspired by the fearless navigators who explored the Pacific using the stars and ocean currents. Using grinders, drills, and sanding techniques, you'll craft your very own pendant while uncovering the stories of these ancient voyagers. A perfect blend of Māori tradition and modern craftsmanship.

AGE 18+  
WHEN SAT 18 JUL  
10AM - 5PM  
COST \$60  
CLASS 10 MAX  
ENROL [STUDIOONE.ORG.NZ](http://STUDIOONE.ORG.NZ)



## MATARIKI FESTIVAL

### POI MAKING

#### KORORIA WITIKA

Join us for a poi-making workshop led by accomplished lifelong artist, maker, and teacher Kororia Witika. Immerse yourself in the artistry and cultural significance of poi as you learn to create your own set.

Discover the beauty of poi, reflect and craft something special for your whānau. This is a family-friendly event. Whānau of all ages are welcome to come along, whether they choose to participate or not. Don't miss this engaging and meaningful workshop celebrating Māori culture, history, and artistic expression!

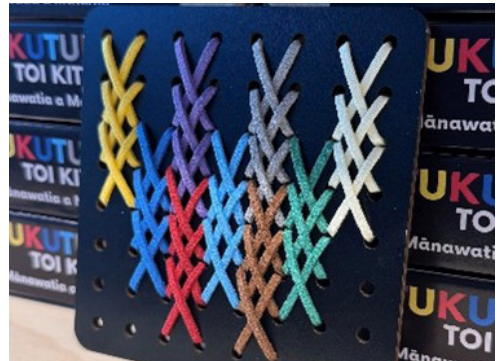
AGE ALL AGES  
WHEN SAT 18 JUL  
11AM - 12PM  
COST FREE  
CLASS 10 MAX  
ENROL [STUDIOONE.ORG.NZ](http://STUDIOONE.ORG.NZ)

### TUKU ATU TUKU MAI

#### AWHINA MURUPAENGA

Weave together the stories of the stars and tukutuku, the traditional Māori art form that adorns our wharenui (ancestral house). In this Matariki workshop, join Awhina to create your own mini tukutuku panel and weave your personal story into tukutuku patterns.

AGE 18+  
WHEN SAT 25 JUL  
10.30AM - 12.30PM  
COST FREE  
CLASS 15 MAX  
ENROL [STUDIOONE.ORG.NZ](http://STUDIOONE.ORG.NZ)



**HARAKEKE SURFACE MAKING**  
—  
**TE ARA MINHINNICK**

This workshop introduces participants to making harakeke paper surfaces through a simple, accessible process. Working with prepared harakeke pulp, participants will form their own paper surface, creating a sheet that can be taken home and worked overtime.

Bring along 2-3 pieces of fabric with you (that you don't mind getting wet or stained) to make your harakeke paper on. Optional: Bring small materials to embed into your paper (e.g. seeds, fibres, threads.)

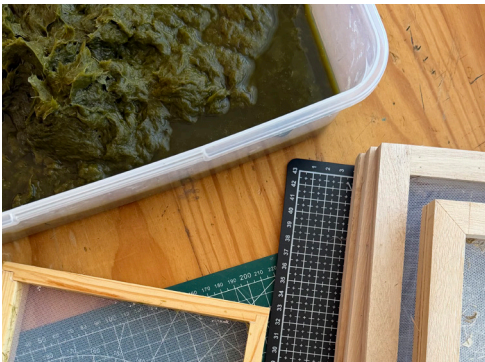
AGE 12+  
WHEN SAT 25 JUL  
1 - 3PM  
COST FREE  
CLASS 10 MAX  
ENROL [STUDIOONE.ORG.NZ](http://STUDIOONE.ORG.NZ)

**MATARIKI TAONGA**  
**PŪORO WĀNANGA**  
—  
**MIKAERE BERRYMAN-KAMP**

Delve into the world of taonga pūoro in a safe wānanga environment designed for participants to connect with our customary Māori musical instruments. Taonga pūoro can be used in a ritual sense and we will explore the holiday of Matariki, how to farewell the year past and welcome the future with these treasures. You will also get the chance to make your own and take it home to further the practice.

Please wear appropriate workshop clothing, bring a bottle of water and any and all questions.

AGE ALL AGES  
WHEN SAT 25 JUL  
4.30 - 8.30PM  
COST FREE  
CLASS 20 MAX  
ENROL [STUDIOONE.ORG.NZ](http://STUDIOONE.ORG.NZ)



## WOMEN & NON-BINARY ARTIST HUI

### RECONNECTING WITH ENCHANTMENT

DRAUNIKAU HAWTHORN

Reconnect with a sense of enchantment and discover the magic already present in the objects you hold dear. In this workshop, you'll create a small pocket altar, a miniature portable shrine for personal reflection or spiritual practice.

All materials will be provided. You're welcome to bring additional embellishments.

WHEN FRI 24 JUL  
6 - 8PM

COST FREE

CLASS 20 MAX

MATERIALS PROVIDED

ENROL STUDIOONE.ORG.NZ



## QUEERS & WARES

### QUEER AF

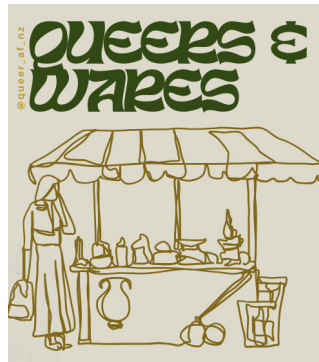
As we head into Spring, *Queers & Wares* will once again bring the community together for a wholesome market with a focus on creativity, connection, and local queer talent.

The kaupapa is all about supporting small businesses and makers, with a focus on handmade, sustainable, and thoughtfully crafted goods.

WHEN SAT 5 SEP  
10AM - 3PM

COST FREE

INFO @QUEER\_AF\_NZ



## WINTER'S END POTTERY MARKET

Don't miss out on this pottery market extravaganza! *Winter's End Pottery Market* is an annual clay event with a variety of stalls, ranging from functional ware to sculptural pieces.

Whether you're a seasoned collector or simply appreciate the beauty of handmade pottery, this market offers a fantastic opportunity to discover one-of-a-kind treasures and support local artisans.

Keep an eye out for the Winter's End Pottery Workshops - TBA later!

WHEN SAT 10 OCT  
10AM - 2PM

COST FREE

INFO

FALCONGREYCERAMICS.COM



# AUCKLAND HERITAGE FESTIVAL

## TASTES OF TĀMAKI

Join us at Studio One Toi Tū for events celebrating Ponsonby's history, people, and the festival theme 'Tastes of Tāmaki'.

With exhibitions, kōrero, and guided walks, there are plenty of ways to get involved!

More information and event details will be available closer to the festival date at [iloveponsonby.co.nz](http://iloveponsonby.co.nz)

WHEN SAT 26 SEP - SUN 11 OCT

INFO [ILOVEPONSONBY.CO.NZ](http://ILOVEPONSONBY.CO.NZ)

## OPEN FOR BUSINESS: A PHOTOGRAPHIC EXHIBITION OF THE 1970'S

—  
LOUISE LONSDALE-COOPER

Photographer Louise Lonsdale-Cooper captures the retail life and characters of 1970s Ponsonby Road.

ROOM 10  
MON 28 SEP - WED 7 OCT

MEET THE PHOTOGRAPHER  
TUE 29 SEPT, 11AM - 12PM

INFO [ILOVEPONSONBY.CO.NZ](http://ILOVEPONSONBY.CO.NZ)



AUCKLAND COUNCIL LIBRARIES COLLECTION

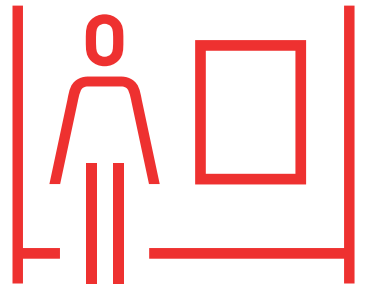


AUCKLAND COUNCIL LIBRARIES COLLECTION

SHOW



# EXHIBITIONS



## TŌFĀ MAMAO

LEALOFITAUTE VA'AI  
& ALESANA K.T

*Tōfā Mamao* explores the intricate landscape of diaspora grief, focusing on how Samoans in Aotearoa navigate loss within a modern urban context. The work examines the tension between demanding cultural traditions, which often consume the immediate period of mourning, and the pressure to quickly return to daily life. Through large-format photographic portraits, video, and evocative poetry and music, the exhibition captures the resilience of those whose farewells must travel across oceans. Drawing from personal experience and community dialogue, the artists reflect on how heritage both anchors and complicates healing when there is little space to truly grieve.

GALLERIES 1 & 2

21 MAY - 18 JUN

OPENING EVENT

WED 20 MAY, 5PM



TAUTE VA'AI, 2025

## LETTERS HOME

FA'AMELE ETUALE

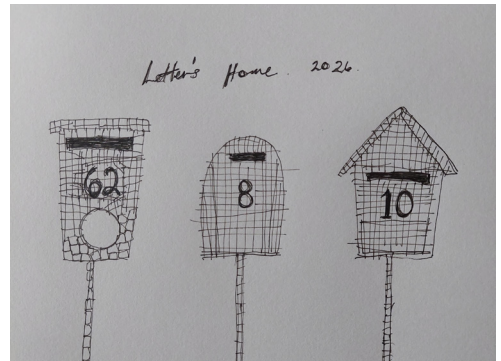
This exhibition explores the quiet, intimate act of writing letters to the people we love. Sitting down with a pen in hand, we express what we often struggle to say aloud; how much we miss someone, when we hope to see them again, or simply how life is unfolding. Fa'amele invites you to consider when the last time was you wrote a letter to someone, or even to yourself. During the show, you are welcome to write your own letter and place it in a pre-paid envelope to be posted at the end of the exhibition.

GALLERY 3

21 MAY - 18 JUN

OPENING EVENT

WED 20 MAY, 5PM



FA'AMELE ETUALE, 2025

## GAPS OF SILENCE

—

MELISSA GILBERT

—

*Gaps of Silence* moves through the liminal spaces between reverence and forgetting, tracing the presence of the old gods of Oceania and the echoes left by colonisation's silencing. These works listen to what lingers in the hush between worship and erasure, where the divine waits to be remembered. Through gesture, colour, and form, art becomes both invocation and archive, a space where ancestral voices are remembered, not as myth, but as enduring presence. In this silence, memory transforms into ceremony; absence into knowing.

GALLERIES 4 & SIDEWALK

21 MAY - 18 JUN

OPENING EVENT

WED 20 MAY, 5PM



MELISSA GILBERT, 2025

## HE TAONGA ĀNŌ TE HAU: TREASURES THAT STILL BREATHE

—

SINIVA MOKARAKA

—

*He Taonga Ānō te Hau: Treasures That Still Breathe* weaves together new and earlier works by multidisciplinary artist Siniva Mocaraka. Working through a Māori and Pasifika lens, Mocaraka reimagines still life to honour taonga as living carriers of mauri, memory, and spirit. Each fine art digital print is composed from taonga of personal significance, printed on archival Hahnemühle paper, and framed in hand-carved rimu. Created for Matariki, the works speak to remembrance, renewal, and ancestral connection, encouraging reflection on the taonga, stories, and relationships that continue to shape whānau and whakapapa.

GALLERY 1

25 JUN - 23 JUL

OPENING EVENT

WED 24 JUN, 5PM



SINIVA MOKARAKA, 2025

## HE TANIWHA, HE TIPUA

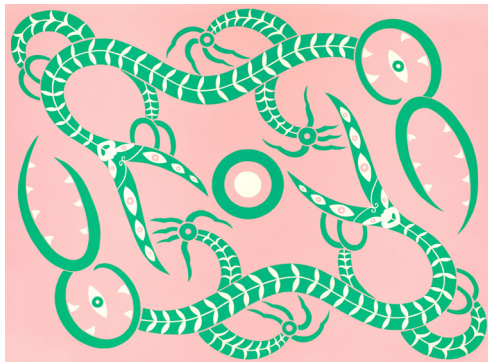
MADISON REDMAN, FERN  
NGATAI & TRISTAN MARLER

*He Taniwha, He Tipua* explores narratives of taniwha in Te Ao Māori. This exhibition brings together a collective of three Toi Māori practitioners; Madison Redman (Ngāti Kahu ki Whangaroa/Ngāpuhi), Fern Ngatai (Ngāti Porou/Tainui) and Tristan Marler (Te Rarawa/Te Aupōuri) to express the diverse representations and symbolic significance of taniwha across Aotearoa.

Through the lens of pūrākau and Toi Māori *He Taniwha, He Tipua* examines the origins, guardianship roles, and relationships of taniwha with different iwi, hapū, and landscapes across the motu. These themes will be explored through paint, print, raranga and sculpture.

GALLERY 2  
25 JUN - 23 JUL

OPENING EVENT  
WED 24 JUN, 5PM



MADISON REDMAN, 2024

## HAERENGA

NOA HĀMANA

*Haerenga* by noa hāmana (Ngāpuhi, Ngāti Kura, Ngāti Toa) explores Māori migration and its continuation in the 21st century. Waves of dispersal across Moana-nui-a-Kiwa brought interludes of radical cultural adaptation, generating ancestral stories that hold mana and connect tangata Māori to whakapapa. Migration holds a paradox of possibility and loss, raising questions of choice, push, and pull—echoed today in movement from Aotearoa to Australia. Rooted in colonial economic histories, these cross-colony pathways have long carried the weight of displacement. *Haerenga* returns to submerged dreams and forgotten stories, revealing culture as fluid, interconnected, and continually redefined.

GALLERY 3  
25 JUN - 23 JUL

OPENING EVENT  
WED 24 JUN, 5PM



NOA HĀMANA, 2025

## NGA TAKUNE | THE INTENTIONS

—  
NGĀ RANGATAHI TOA

This Matariki mā Puanga exhibition is a rangatahi-led exploration of intention - what is meant, what we carry forward, and what is chosen.

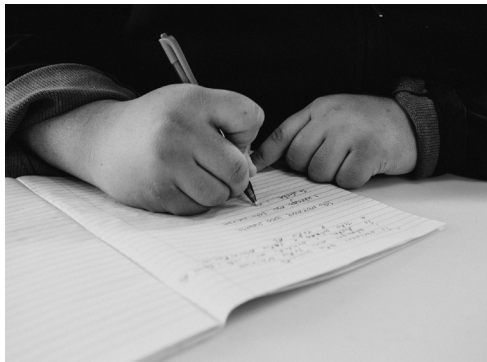
Rangatahi reflect on what they choose to nurture, and how they locate themselves within whānau, hāpori, and whakapapa. Through visual art, installation, and written expression, they respond to lived experience with truth and care.

GALLERY 4

25 JUN - 23 JUL

OPENING EVENT

THU 25 JUN, 6PM



EMILY RAFTERY, 2025

## TERMS OF ENDEARMENT

—  
OLIVIA ASHER

*Terms of Endearment* considers how intimacy is shaped through language that both reveals and avoids. Using clay and text, the work explores emotional residue, repetition, and the labour of holding what cannot be resolved. Connected forms share one body, offering a physical logic to emotional experience—shared, fluid, difficult to contain. Text appears as declaration, deflection and confession. Memory is carried through touch and material presence, allowing vulnerability to surface without explanation.

SIDEWALK GALLERY

25 JUN - 23 JUL

OPENING EVENT

WED 24 JUN, 5PM



OLIVIA ASHER, 2025

## D3SIR33

—  
BAILEY MCNALLY  
—

*d3sir33* works as both a creative force and a misleading illusion, driving growth while longing for an unattainable return to the past. This tension creates cycles of attachment and self-reinvention, where identity remains fluid and unresolved. Using a maximalist and fragmented visual language, Bailey McNally explores this emotional intensity with colour and mark making. The works examine feelings of disruption and longing as ongoing experiences, through which meaning is constantly reimagined.

GALLERY 1

30 JUL - 27 AUG

OPENING EVENT

WED 29 JUL, 5PM



BAILEY MCNALLY, 2025

## WAKE UP

—  
HOLLY ROCK & BRIDGET  
MCKENDRY WITH SUPPORT  
FROM MA'ALONA MAFAUFAU  
—

*Wake Up* reflects on life in 2026: the exchange of freedom for comfort and safety, the rise of AI, mass surveillance and media manipulation, and the decline of privacy, autonomy and critical thinking.

Using both traditional and cutting-edge techniques, the artists respond to their world-at-large; blending a unique combination of retro and graffiti-inspired design, textiles, and digital fabrication with a nostalgic longing for a golden era now past. The works challenge us to question our current reality and to see the world with open eyes.

GALLERY 2

30 JUL - 27 AUG

OPENING EVENT

WED 29 JUL, 5PM



HOLLY ROCK, 2026

## TWILIGHT OF THE MACHINES

MIKE CRAWSHAW

Mike Crawshaw's series of oil paintings explore car wrecks as charged sites of trauma and memory. The car, once a vessel of motion and the future, becomes in its wrecked state an afterimage of an entire organising logic. Stripped of function and picked over for parts, these spent beasts bear the marks of both sudden catastrophe and slow erosion. This collapse is mirrored in paint and brush: form dissolves into abstraction, while colour inverts and pushes toward chromatic excess.

GALLERY 3

30 JUL - 27 AUG

OPENING EVENT

WED 29 JUL, 5PM



MIKE CRAWSHAW, 2025

## LOVE AND PEACE

KAY SHIBUYA

IN ASSOCIATION WITH  
TOI ORA LIVE ARTS TRUST

Kay Shibuya's practice focuses on love and peace, expressed through meditative, nature-led works. Using motifs such as cherry blossoms, moana, sky, sun, moon, and forest forms, her work reflects a deep connection to the natural world. In this series, Kay holds Dubai, Lebanon, Ukraine and Iran in mind, creating each piece as a gesture of care and unity. Through soft, atmospheric mandalas and rainbow-infused colour, the works offer a sense of connection across distance

GALLERY 4

30 JUL - 27 AUG

OPENING EVENT

WED 29 JUL, 5PM



KAY SHIBUYA, 2025

## LICHENING

TATE AGNEW

The 'lichening rod effect' is a term coined by Trevor Goward that describes the phenomena of challenging assumptions through the observation of overlooked natural spaces, opening the door to deeper admiration and renewed curiosity. In *Lichening*, Tate Agnew studies forgotten urban natural spaces; the moss on the roof of a building, the insects integral to our daily life, and the forgotten mycelium network below our feet. The work celebrates science in its most accessible form and encourages admiration towards the natural world.

SIDEWALK GALLERY

30 JUL - 27 AUG

OPENING EVENT

WED 29 JUL, 5PM

## THE ART OF PERFECTION

ISABELLA LEPOAMO

Isabella Lepoamo explores the emotional framework of competition, performance, and perfectionism, drawn from her history as a professional synchronized swimmer representing New Zealand. Through self-portrait rhinestone and stainless-steel sculptures, the works examine beauty, endurance, labour, and self-image, reflecting on the pressures of perfection and visibility. The exhibition also considers the competitive environment fostered within art school, and how systems of comparison, achievement, and recognition continue to shape artistic identity and self-worth.

GALLERIES 1 & SIDEWALK

3 SEP - 1 OCT

OPENING EVENT

WED 2 SEP, 5PM



TATE AGNEW, 2025



ISABELLA LEPOAMO, 2026

## SMALL WORLD

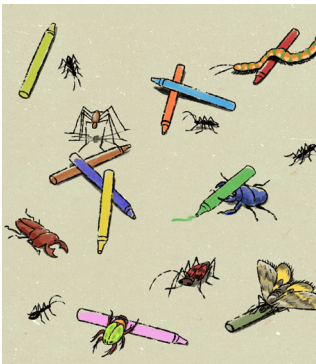
—  
PON HUEY MIN,  
PETER SIMPSON  
& MELODY RENAUD  
—

In Aotearoa, insects represent the vast majority of our animal diversity, yet they often go unnoticed. *Small World* is an interactive digital installation that invites audiences to draw their own bugs and release them into an evolving ecosystem.

This work celebrates creativity and quiet observation, encouraging audiences to slow down, reflect, and find empathy for the small lives that sustain our world.

GALLERY 2  
3 SEP - 1 OCT

OPENING EVENT  
WED 2 SEP, 5PM



PON HUEY MIN, 2026

## FROM THE ARBORIST TO THE BUILDER

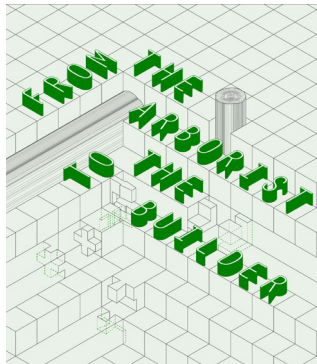
—  
BENJAMIN EVERITT  
—

From the forest floor to our homes, how does a single tree shape the future of housing in Aotearoa?

Through photos, infographics, models, and diagrams, *From the Arborist to the Builder* explores New Zealand's reliance on Radiata Pine and invites us to rethink how we grow, manufacture, and build with one of our most vital resources — seeing timber not just as a material, but as part of a larger living network.

GALLERY 3  
3 SEP - 1 OCT

OPENING EVENT  
WED 2 SEP, 5PM



BENJAMIN EVERITT, 2025

## COMMS

—  
ALEXANDER 葉  
L. BROWN  
—

*COMMS* is an open conversation on control and compromise from the point-of-view of Chinese/Pākehā interdisciplinary artist Alexander 葉 L. Brown. In his third solo exhibition, Brown examines his internal dialogue on familial and chosen culture against external expressions of understanding. This series of abstract works connects opposing forces and tensions that arise through interpersonal exchange.

GALLERY 4  
3 SEP - 1 OCT

OPENING EVENT  
WED 2 SEP, 5PM



ALEXANDER 葉 L. BROWN, 2026

MAKE



# ADULTS



## WHEEL MATES

—  
NAOMI ALLAN  
—

This well-rounded course introduces the fundamentals of creating functional ceramic pieces while encouraging you to bring personality into your work through texture, form, and sculptural exploration.

Through Naomi's demonstrations and hands-on learning, you'll explore a blend of hand-building and wheel-throwing techniques while discovering the joy of working with clay and its many creative possibilities. This course is open to beginners, as well as those looking to expand their skills.

WHEN TUE  
6 - 9PM  
STARTS 28 JUL  
LENGTH 6 WEEKS  
CLASS 9 MAX  
COST \$395

INCLUDES UP TO 10KG CLAY,  
GLAZES AND FIRINGS  
ENROL STUDIOONE.ORG.NZ

## IN MUD WE TRUST

—  
IZA LOZANO  
—

Whether you're aiming to become a Mud Master or simply looking to relax after a long day, this four-week multi-level evening workshop will take you through wheel throwing, trimming, and glazing techniques.

With Iza's guidance, you can create your own cups, mugs, bowls & vases or materialize a clay project you have in mind. Open to beginner and intermediate potters—no prior experience needed.

WHEN WED  
6 - 9PM  
STARTS 2 SEP  
LENGTH 4 WEEKS\*  
CLASS 9 MAX  
COST \$270

INCLUDES UP TO 10KG CLAY,  
GLAZES AND FIRINGS  
ENROL STUDIOONE.ORG.NZ

\*NOTE: THIS TERM IS A SHORT COURSE



## MARBLED CLAY ON THE WHEEL

—  
IZA LOZANO

Create mesmerizing marbled ceramic vases and cups by combining contrasting coloured clay and shaping it on the potters wheel. In this hands-on weekend workshop, you'll learn the basics of agateware: from mixing pigmented clay to wheel-throwing on day one, and trimming your works to reveal a swirl of vibrant patterns on day two.

Whether you're new to pottery or looking to add a new technique to your skill set, this workshop will leave you inspired and with beautiful, one-of-a-kind pieces to take home.

WHEN SAT 25 & SUN 26 JUL  
10AM - 1PM  
CLASS 9 MAX  
COST \$160  
MATERIALS AND FIRINGS INCLUDED  
ENROL [STUDIOONE.ORG.NZ](http://STUDIOONE.ORG.NZ)

## DROP-IN CERAMICS STUDIO

—  
GEORGIA HOOD

Looking for time to focus on a project or need some technical advice? Join us on Fridays to work in our ceramics studio. These weekly drop-in sessions are perfect for practitioners seeking studio space to develop their own projects or hone their skills. Our technician Georgia can offer basic help and technical guidance.

WHEN FRI  
12 - 6PM  
STARTS 24 JUL - 25 SEP  
COST \$5 PER PERSON, PER HOUR  
BRING YOUR OWN TOOLS, MATERIALS, AND PROJECTS TO WORK ON

PUBLIC BISQUE FIRING:  
31 JUL & 9 OCT  
PUBLIC GLAZE FIRING:  
7 AUG & 16 OCT  
\*CONTACT US FOR MORE INFO IF YOU'RE INTERESTED IN THE PUBLIC FIRINGS



## MAKE A TEAPOT!

—  
IZA LOZANO  
—

Join this 2-day teapot workshop. On day one, you'll create the elements of your teapot on the wheel—forming the body, lid, and spout by throwing off the hump. On day two, you'll make a handle, trim and refine each piece before assembling everything into a finished teapot and decorating with underglaze. Previous experience on the wheel is recommended. Make and fire up to two teapots.

WHEN SAT 12 & SUN 13 SEP  
10AM - 1PM

CLASS 9 MAX

COST \$190

INCLUDES MATERIALS AND FIRINGS

ENROL STUDIOONE.ORG.NZ

## MAKING MUGS

—  
IZA LOZANO  
—

Enjoy a relaxed weekend learning how to make your own mugs. On day one, you'll focus on throwing cylinders on the wheel and shaping your forms. On day two, you'll trim your pieces, attach handles, and decorate them using underglazes.

This is a multilevel workshop, suitable for complete beginners as well as those with some experience who want to practice and refine their technique through repetition.

WHEN SAT 19 & SUN 20 SEP  
10AM - 1PM

CLASS 9 MAX

COST \$160

INCLUDES MATERIALS AND FIRINGS

ENROL STUDIOONE.ORG.NZ



## SPECIALIST DROP-IN

### TEXTURE & TACTILITY

—  
OLIVIA ASHER

—  
Join artist Olivia Asher for a hand-building workshop focused on texture, tactility and embracing irregularity. This workshop encourages an intuitive approach to working with clay and its natural movement. Participants will explore pinching, coiling, surface manipulation, and tactile mark-making to create small vessel forms that sit between the sculptural and the functional. Suitable for any skill level.

WHEN FRI 11 SEP  
1 - 3PM

CLASS 10 MAX  
COST \$10

MATERIALS INCLUDED  
ENROL STUDIOONE.ORG.NZ



## MINDFULNESS POTTERY

### FALCON GREY CERAMICS

—  
Learn the pinch pot technique in this immersive hand-building pottery workshop. These workshops are catered to learning the basic pottery techniques for hand-building with clay. Use the themed technique to create a bowl, trinket dish or simply experiment and go with the flow. All pieces will be fired and ready for pick up at a later date. Suitable for ages 8+ and beginners.

WHEN SAT 29 AUG  
10 - 11.45AM

CLASS 12 MAX  
COST \$75

MATERIALS INCLUDED  
ENROL  
FALCONGREYCERAMICS.COM



## POTTERY TASTER WORKSHOPS

### FALCON GREY CERAMICS

—  
This pottery taster workshop allows you plenty of room to experiment and to create your own bespoke vessel such as a mug or cup, while learning the basics for hand-building with clay. Your creation will be fired and ready for pick up at a later date. Suitable for ages 8+ and beginners.

WHEN SAT 15 AUG  
OR SAT 26 SEP  
10 - 11.45AM

CLASS 12 MAX  
COST \$75

MATERIALS INCLUDED  
ENROL  
FALCONGREYCERAMICS.COM



## BUILD YOUR OWN TERRARIUM: A PLAYDATE FOR PLANT LOVERS

### AO TERRARIUM

A playdate for the plant-obsessed (or plant-curious). Join us for a slow, creative session where you'll build a tiny self-contained world to take home. This workshop is about connection, creativity, and getting your hands busy in the best way. Come solo or bring a friend — you'll leave with something beautiful and a little lighter than you arrived.

WHEN SAT 1 AUG  
11AM - 12.30PM

CLASS 15 MAX

COST \$99

MATERIALS INCLUDED

ENROL [STUDIOONE.ORG.NZ](http://STUDIOONE.ORG.NZ)

## HANDMADE SPELL CANDLES

### DRAUNIKAU HAWTHORN

Within this course you'll be taken through the steps to create your own taper candles, tuned to your desires and intentions. Spell candles are used to represent certain goals, herbs and oils are dressed in to amplify their purpose and manifestations used within the practice of magikal rituals, opening the door of enchantment in your life. Through this course you'll create your own hand dipped wax candles, selecting a colour and rolling them in your choice of herbs and oils.

WHEN SAT 8 AUG OR SAT 26 SEP  
11AM - 2PM

CLASS 10 MAX

COST \$40

MATERIALS INCLUDED

ENROL [STUDIOONE.ORG.NZ](http://STUDIOONE.ORG.NZ)



## REALISTIC DRAWING & PORTRAIT OIL PAINTING CLASS

—  
ALVIN XIONG

—  
Unleash your artistic potential as we delve into traditional drawing techniques. From outlines and shading to texture and perspective, we'll capture the likeness of reference photographs. Join us to refine your skills, unlock new horizons, and create stunning artworks that leave a lasting impression.

WHEN THU  
12.30 - 3PM

STARTS 23 JUL

LENGTH 8 WEEKS

CLASS 10 MAX

COST \$455

ADDITIONAL MATERIALS  
LIST WILL BE PROVIDED

ENROL [STUDIOONE.ORG.NZ](http://STUDIOONE.ORG.NZ)

## PORTRAIT FOUNDATIONS

—  
MARK WHIPPY

—  
This course will teach drawing methods taught by masters Frank Riley, Andrew Loomis and John Asaro. You will learn how to see the head in shapes and planes, allowing you to accurately map proportions and features on a face. By the end you will be able to capture portraits with confidence, speed and efficiency. This class occasionally includes live models for observation and practice.

WHEN TUE  
6.30 - 8.30PM

STARTS 21 JUL

LENGTH 8 WEEKS

CLASS 10 MAX

COST \$260

ADDITIONAL MATERIALS  
LIST WILL BE PROVIDED

ENROL [STUDIOONE.ORG.NZ](http://STUDIOONE.ORG.NZ)

## LIFE DRAWING 101

—  
MARK WHIPPY

—  
This course will be an introduction into figure drawing, where you will learn to construct more realistic figures by focusing on gesture, structure, and proportion. You will develop drawings that convey a sense of flow and life, as well as the weight of 3D form. You will also learn tips to find key landmarks that help you to map the figure out. This class includes live models for drawing practice.

WHEN WED  
6.30 - 8.30PM

STARTS 22 JUL

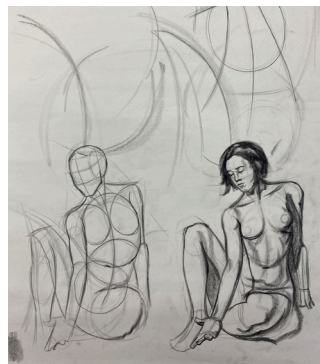
LENGTH 8 WEEKS

CLASS 10 MAX

COST \$260

ADDITIONAL MATERIALS  
LIST WILL BE PROVIDED

ENROL [STUDIOONE.ORG.NZ](http://STUDIOONE.ORG.NZ)



## DROP-IN PRINT STUDIO

BETH SERJEANT

Come along and work independently in our printmaking studio. Studio One Toi Tū has three print presses available, including a large-scale printing press, and we want our community to utilise them. Bring your own projects and work alongside like-minded creatives. Our longstanding printmaking tutor, Beth Serjeant will be able to provide technical advice and some limited materials will be available.

WHEN TUE  
10AM - 2PM  
21 JUL - 22 SEP

COST \$5 PER HOUR

BRING YOUR OWN TOOLS, MATERIALS, AND PROJECTS TO WORK ON

## TETRA PAK IN RELIEF

INA ARRAOUI

Join Ina Arraoui for a printmaking class to explore the exciting possibilities of printing with recycled Tetra Pak cartons. Learn how to cut, ink, and print images to achieve a variety of visual effects, expressive lines, shapes and textures.

Suitable for beginners and those new to printmaking.

WHEN MON  
6.30 - 8.30PM

STARTS 31 AUG

LENGTH 4 WEEKS

CLASS 10 MAX

COST \$220

MATERIALS INCLUDED

ENROL [STUDIOONE.ORG.NZ](http://STUDIOONE.ORG.NZ)



## WATER-BASED WOODBLOCK PRINTING

—  
SYBILLE SCHLUMBOM  
—

Mokuhanga, the Japanese method of water-based woodblock printing, is best known for the iconic ukiyo-e prints of Japan's Edo period. In this course, you'll be introduced to the fundamentals of this sustainable and low-tech printmaking technique. You'll explore design considerations, carving methods, the effective registration system and printing techniques unique to mokuhanga.

The course is suitable for beginners as well as experienced artists, printmakers, and anyone with an interest in Japanese art and craft traditions.

WHEN    WED  
          10AM - 12.30PM

STARTS 22 JUL  
LENGTH 5 WEEKS  
CLASS    10 MAX  
COST     \$250

BASIC TOOLS AND MATERIALS PROVIDED  
ENROL    STUDIOONE.ORG.NZ



## SCREEN PRINTING WORKSHOP USING SCREEN FILLER

—  
TALIA RUSSELL  
—

Learn a fun and cost effective way to create stencils for screen printing in this hands-on 4 hour workshop. Using an embroidery hoop, mesh, and screen filler, you'll make your own DIY screen and print an original design with water-based inks. Take home your handmade screen and finished prints so you can continue printing on textiles or paper at home.

Suitable for beginners, as well as anyone wanting to learn a new printmaking technique.

WHEN    SAT 26 SEP  
          11AM - 3PM

CLASS    10 MAX  
COST     \$110

MATERIALS INCLUDED  
ENROL    STUDIOONE.ORG.NZ



# KIDS & TEENS



**TAMARIKI POTTERY**  
—  
**FALCON GREY CERAMICS**  
—

Join *Tamariki Pottery* and explore the joy of working with clay! In this hands-on class, children will learn the fundamentals of pottery while creating both functional pieces and imaginative sculptural forms. They will experiment with texture, decoration, and underglaze techniques to bring their ideas to life.

AGE 6 - 12  
WHEN TUE, 3.45 - 5PM  
STARTS 28 JULY  
LENGTH 6 WEEKS  
CLASS 12 MAX  
COST \$160  
MATERIALS & CERAMIC FIRINGS INCLUDED  
ENROL [STUDIOONE.ORG.NZ](http://STUDIOONE.ORG.NZ)



**TEEN ARTWORK**  
—  
**TANJA NOLA**  
—

In a fully equipped art studio, students work progressively to develop their own visual language. Experienced artist and tutor, Tanja, supports students to discover their creative potential and build confidence in their art practice. This term offers a ceramics-focused exploration of clay, complemented by drawing and colour work, concluding with an exhibition in our Sidewalk Gallery.

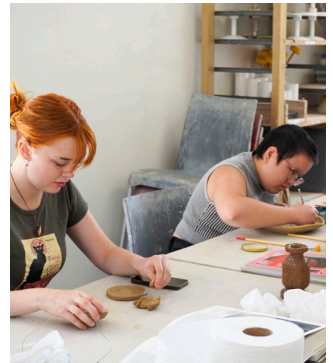
AGE 13 - 17  
WHEN THU, 4 - 6PM  
STARTS 6 AUG  
LENGTH 7 WEEKS  
CLASS 8 MAX  
COST \$420  
MATERIALS & CERAMIC FIRINGS INCLUDED  
ENROL [STUDIOONE.ORG.NZ](http://STUDIOONE.ORG.NZ)



**DROP-IN ART GROUP**  
—  
**TANJA NOLA**  
—

School leavers are invited to immerse themselves in a relaxed and friendly studio environment. Explore your own interests with clay, drawing and painting media or bring along your own work. You can join us for an hour or stay for four. Experienced artists will be available to guide your ideas providing insights and techniques to help you. All materials, equipment and clay firings will be provided. Let us know if you are thinking of joining us by booking a spot, and enjoy some art making time with others.

AGE YOUTH, 17 - 25  
WHEN SAT 4 JUL, 1 AUG, 5 SEP, 3 OCT  
2 - 6PM  
COST FREE  
ENROL [STUDIOONE.ORG.NZ](http://STUDIOONE.ORG.NZ)



# SCHOOL HOLIDAYS



## MID-WINTER MONSTER MUG MAYHEM!

—  
TERESA PETERS

—  
Design your own Monster Mug this winter holidays! Choose from your favourite freaky Monster. Create your own hand built clay Mug. Glaze it, decorate it and bring your Monster Mug to life. Take home a colourful, fired, full functional ceramic Mug!

AGE 7 - 12  
WHEN MON 6 & TUE 7 JUL  
10AM - 2PM  
CLASS 12 MAX  
COST \$185  
MATERIALS & CERAMIC  
FIRINGS INCLUDED  
ENROL STUDIOONE.ORG.NZ

## MONSTER MUG MAYHEM!

—  
TERESA PETERS

—  
Design your own Monster Mug this spring holidays! Choose from your favourite freaky Monster. Create your own hand built clay Mug. Glaze up - bring your Monster Mug to life. Take home a colourful glazed and fired ceramic Monster Mug just in time for Halloween!

AGE 7 - 12  
WHEN MON 28 & TUE 29  
SEP  
10AM - 2PM  
CLASS 12 MAX  
COST \$185  
MATERIALS & CERAMIC  
FIRINGS INCLUDED  
ENROL STUDIOONE.ORG.NZ

## HALLOWEEN BEASTS

—  
VAL ONG

—  
Celebrate the spooky season by creating your own Halloween clay beasts and creatures. In this hands-on workshop, we will explore sculpting techniques, texture, and character design to bring eerie creations to life. From mischievous goblins and monsters to whimsical creatures, participants will be encouraged to let their imagination run wild. Come dressed for mess and enjoy two days of sculpting, storytelling, and Halloween fun.

AGE 5 - 11  
WHEN TUE 6 & WED 7 OCT  
10AM - 2PM  
CLASS 12 MAX  
COST \$185  
MATERIALS & CERAMIC  
FIRINGS INCLUDED  
ENROL STUDIOONE.ORG.NZ



# INFORMATION

## CANCELLATIONS & REFUNDS

---

Courses or workshops may be cancelled if minimum enrolment numbers are not met. If this happens, we will notify all participants at least three days before the scheduled start date. If we cancel a course, all payments will be refunded in full. No refunds are available once a booking has been made or after the course has started, regardless of attendance.

## CERAMICS COURSES

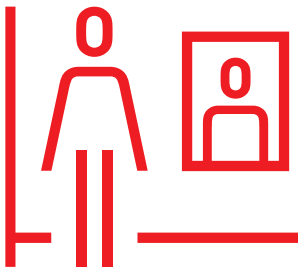
---

Please wear something you don't mind getting messy. Finished pottery from courses and workshops will be available to collect approximately four weeks after the class finishes. Please understand even with the most careful handling in some cases works may break when kiln-fired. In the event this happens, we will do everything we can to repair your creation but no refunds will be given.

## CONDITIONS OF ENTRY

---

Our goal is to provide a safe, inclusive, respectful, and well-maintained environment for all community who use the space, this includes staff, volunteers, visitors, and guests. We do not accept threatening, antisocial, discriminatory, or harmful behaviour, whether directed at kaimahi (staff) or customers.



HI RE





## ROOMS AND EVENT SPACE

---

Studio One Toi Tū has a variety of adaptable indoor and outdoor spaces to meet your needs, bring your idea to life and open your event to the community. Whether you're a designer looking for a space to show your latest collection, a book group seeking a central meeting place, or if you are looking for something more exciting we have the space for you. To find out how we can support you, visit or call us on 09 376 3221.

## VENUE HIRE

We offer a range of room hire options available at an hourly rate. Come in to view and discuss how we can assist you to find a space that suits your needs, we are always happy to show you around. To book a space please visit [booking.aucklandcouncil.govt.nz/facilities](http://booking.aucklandcouncil.govt.nz/facilities).

### MEETING AND EVENT SPACE

Studio One Toi Tū has a variety of adaptable indoor and outdoor spaces to meet your needs, bring your idea to life and open your event to the community. Whether you're a designer looking for a space to show your latest collection, a book group seeking a central meeting place, or if you are looking for something more exciting we have the space for you. To find out how we can support you, visit or call us on 09 376 3221.

### HIRE RATES

We have a range of room hire options available at an hourly rate\*. Come in to view and discuss how we can assist you to find a space that suits your needs, we are always happy to show you around.

\* A community rates discount is available by application

## SPACES FOR HIRE

### ROOM 5

—  
A versatile meeting, workshop and function room with heating and air conditioning.

### ROOM 6

—  
A sunny versatile meeting, workshop and function room with views onto the rear deck.

### ROOM 10

—  
A large clean studio with options. It can be hired as a shared studio with up to 12 desks, a rehearsal room, for conferences, seminars, workshops, pop-up exhibitions, film screenings, book launches and more. This space can be booked hourly or weekly with possibilities to hire additional rooms as break-out space.

### ROOM 11

—  
Our dedicated art workshop with print press, tables, stools, chairs, easels and spot lights. This space is set up to accommodate painting and visual art practices and can be hired in its entirety at our hourly, daily or half daily rate.

### ROOM 12

—  
Dedicated art workshop set up to accommodate sculpture practices. This workshop can be hired in its entirety at an hourly, daily or half daily rate.

# STUDIO ONE — TOITŪ

## OPENING HOURS

—

### All spaces

Mon - Fri	10am - 6pm
Sat	10am - 4pm
Sun	Closed

—

### Residents

24/7 access

## ACCESS

—

All rooms and galleries are wheelchair accessible.

## LOCATION

—

1 Ponsonby Road,  
Auckland, New Zealand

## CONTACT

—

09 376 3221  
info@studioone.org.nz  
studioone.org.nz

facebook.com/studioonetoitu  
instagram.com/StudioOne.ToiTu

#VisitCreateMake  
#HirePlayShow  
#StudioOneToiTu