

STUDIO  
ONE  
—  
TOI TŪ

WHAT'S ON  
—  
JUL - SEP 2025

PROGRAMME

3



KIA ORA KOUTOU,  
NAU MAI HAERE MAI KI  
STUDIO ONE TOI TŪ!

WE HAVE A HUGE LINE  
UP OF CREATIVE EVENTS  
THIS WINTER, INCLUDING  
EXHIBITIONS, TALKS,  
AND EVENTS. CELEBRATE  
MATARIKI FESTIVAL,  
HERITAGE FESTIVAL  
AND MUCH MORE!

JOIN US THIS WINTER AND  
VISIT, CREATE, MAKE  
AT STUDIO ONE TOI TŪ.



# FIND OUT MORE

The creative precinct at Studio One Toi Tū is a hub for making. At the intersection of arts and community, it is a place to meet, exchange, grow, learn and join a neighbourhood of creative activity at 1 Ponsonby Road.

If you would like to receive details of upcoming events and programmes, like our Facebook page, follow us on Instagram, visit our website or email us to subscribe to our newsletter.

09 376 3221  
[info@studioone.org.nz](mailto:info@studioone.org.nz)  
[studioone.org.nz](http://studioone.org.nz)

[facebook.com/studioonetaitu](https://facebook.com/studioonetaitu)  
[instagram.com/StudioOne.ToiTū](https://instagram.com/StudioOne.ToiTū)

#VisitCreateMake  
#HirePlayShow  
#StudioOneToiTū

## LOCATION

—  
1 Ponsonby Road  
Auckland, New Zealand



# CONTENTS

ARTIST PROFILE	P. 8 - 11
OPEN	P. 12 - 21
SHOW	P. 22 - 27
MAKE	P. 28 - 35
—	
ADULTS	
CERAMICS	P. 30 - 32
COLLAGE	P. 32
PRINTMAKING	P. 33 - 34
PAINTING	P. 34
DRAWING	P. 34 - 35
—	
KIDS & TEENS	P. 36 - 38
SCHOOL HOLIDAYS	P. 39 - 41
—	
HIRE	P. 42 - 47

## HIRE, PLAY, SHOW



## VISIT, CREATE, MAKE

---

With opportunities for individuals and community groups through to experienced professionals, we offer a range of studio spaces for hire, offering you a place to workshop an idea, learn a new technique or sharpen your skills.

Become a part of the creative community at Studio One Toi Tū by applying to be a part of our exhibition programme, work with us as a tutor, or hire our space.



## STUDIO SPACES

---

We have a range of studio options and are one of the few precincts in Auckland to offer access to 'messy' workshops suitable for ceramicists, sculptors and object makers. We also offer a number of open studio spaces that can be hired individually or collectively for making, meetings, workshops or temporary events.

We are located in the heart of central Auckland with free wi-fi, kitchen facilities and the possibility for 24-hour access. Contact us to find out how we can support you.

## THE CELL BLOCK

---

The Cell Block studio spaces are private studios. Each studio comes with 24-hour access and is hired on a monthly basis.

## VILLA STUDIO

---

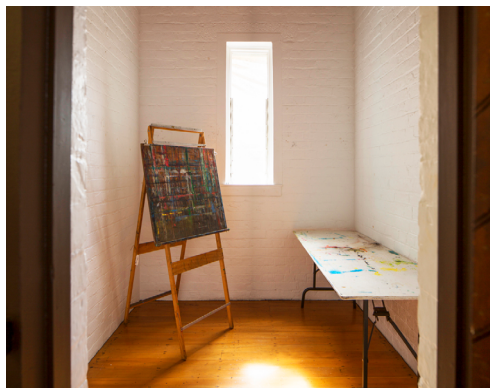
A shared studio space with access to the sculpture workshop is available. It comes with 24-hour access and is hired on a monthly basis.

## WORKSHOP HIRE

---

Studio One Toi Tū has two 'messy' workshops that can be hired at an hourly rate with access to our ceramic and printmaking equipment. If you have a project and need that extra space to make it happen, this is the option for you.

Contact Studio One Toi Tū to find out more information and check the availability of our studios, gallery and spaces for hire.



## CALL FOR EXHIBITION PROPOSALS

---

Studio One Toi Tū welcomes innovative approaches to creative practice and offers opportunities for you to be a part of our diverse exhibition programme. Our four ground floor galleries and Sidewalk Gallery window space can accommodate various visual art practices and are available for hire through an annual call for proposals. Our next call out will be in mid-2025 for exhibitions in 2026.

## CALL FOR TUTORS PROPOSALS

---

Studio One Toi Tū welcomes new and engaging course and workshop proposals from all creative disciplines, ranging from drawing, taxidermy, weaving and printmaking. Courses and workshops can be aimed at adults, youth or proposed as part of our school holiday programme.

Successful tutors are supported through resources available at Studio One Toi Tū, including the use of fit-for-purpose studios and workshop rooms.

## CALL FOR RESIDENCY

---

Our Creative Studio Residency programme is open to applicants once a year. We select between two to five projects annually. Successful applicants will be supported by Studio One Toi Tū resources, networks and mentoring. The Residency concludes with an achievable exhibition or event. 2021 Residents included Esther Toclo, Kalee Jackson and Ashleigh Taupaki. Our next call out is planned for this term - more info to come soon via our social media and email newsletter.



EMMA SAVAGE, 2021

# ARTIST PROFILE

---

GEORGIA HOOD

---

CERAMIC ARTIST

CAN YOU START BY TELLING  
US A LITTLE ABOUT  
YOURSELF?

---

Tēnā koe, thank you for having me! Ko Ngāti Rangiwewehi, ko Ngāti Whakauae, ko Ngāti Raukawa ngā hapū ki te taha o tōku māmā. Ko Ngāti Pākehā te iwi ki te taha o tōku pāpā. Ko Georgia Tikaputini Douglas Hood ahau.

HOW DID YOUR JOURNEY WITH  
CERAMICS BEGIN?

---

I've been a crafty person for as long as I can remember, and in 2021 my friend Bonnie asked if I wanted to do the Throw it Down class at Studio One Toi Tū. I remembered that I did art classes there when I was eight years old and loved it, so of course I agreed. I fully introduced myself to uku (clay), and for lack of a better way to put it, I fell in love.

I now have my own space in this studio, which I love. I was so enabled by the people around me, like Val (ceramics tutor), and the team at Studio One Toi Tū. It all felt like it was meant to be, and I feel very lucky.

---

Haere mai, Georgia !

We're excited to welcome Georgia as our temporary ceramics technician while Val embarks on an exciting artist residency in Japan.

This is a fantastic opportunity for growth, learning, and upskilling - we're thrilled to have you on board, Georgia !

Check out the Ceramics Drop In on page 31





## WHAT CERAMICS TRADITIONS OR PRACTICES HAVE INSPIRED YOU?

—

Well, clay has been a massive part of Greek culture for thousands and thousands of years, and this has resulted in some seriously cool and interesting work derived from their environment. In 2024, I visited Greece and was deeply struck by several remarkable artefacts. Their surfaces were beautifully illustrated, and I later discovered they were intricately decorated coffins, crafted for royalty and people of high status.

I took part in an artist residency held on the island of Crete. On a day trip to Margarites we were taken to a farm run by a family that had a massive wood-fired kiln and mountains of clay piled up next to this self-made manual clay processing station and a shared love for uku and the act of creating gave me a strong sense of belonging.

Wi Taepa, whose work I first saw in the Auckland Art Gallery Toi o Tāmaki many years ago; Richard Parker, a ceramicist from Nelson, whose work has been an integral part of me finding my style; Anna Miles and Richard Fahey (gallerists that own a lot of Parker's work), who I met in 2023 and who introduced me to Peter Hawksby and Tanja Nola, a ceramic artist I share a studio with, who has been instrumental in making me believe in myself and to keep doing what I'm doing.

## WHAT ARE YOU CURRENTLY WORKING ON?

—

Now that I'm back home, there's a feeling of wanting to connect more with uku in a holistic way. I have been learning more about uku in Te Ao Māori to further deepen and understand that connection. Ngā Kaihanga Uku is a collective of Māori clay artists that has opened a whole new world in clay for me. I'll definitely be exploring more into their kaupapa and how it relates to me and my mahi.

In terms of technical exploration, I'd love to get better at glazing, and I'm going to try going massive in terms of scale.

## DO YOU HAVE ANY RITUALS OR HABITS IN THE STUDIO THAT HELP YOU GET INTO A CREATIVE FLOW?

—

I like to do a little Karakia to invite good energy into the studio because my work is very intuitive and I plan very little, so it's nice to start the day with a karakia to welcome some focus into the subconscious. Other than that, a deep breath in and out when I enter my studio usually puts me in the right headspace.





# OPEN



## CREATIVE TALKS, POP-UPS AND EVENTS



### MAKE IT HAPPEN HERE

From creative conversations to pop-up exhibitions, there's always something happening at 1 Ponsonby Road. If you require a studio for a project or workshop, would like to showcase your work or are in need of a venue to host a special event, contact us to discuss the opportunities available for you at Studio One Toi Tū.

MATARIKI FESTIVAL

RONGOĀ MĀORI WORKSHOP

—  
DONNA KERRIDGE  
—

Studio One Toi Tū is excited to host a Rongoā workshop with Donna Kerridge, a registered Medical Herbalist and traditionally trained Rongoā Māori practitioner. In this session you will learn about the philosophy of traditional Māori medicine and how this applies to our care and wellbeing. Learn how to make a balm for the whole whanau using nature’s gifts.

WHEN     WED 11 JUN  
           12 - 1.30PM  
COST     FREE  
CLASS    12 MAX  
ENROL    STUDIOONE.ORG.NZ



TANIWHA BESTIES RIDE  
OR DIE EXHIBITION

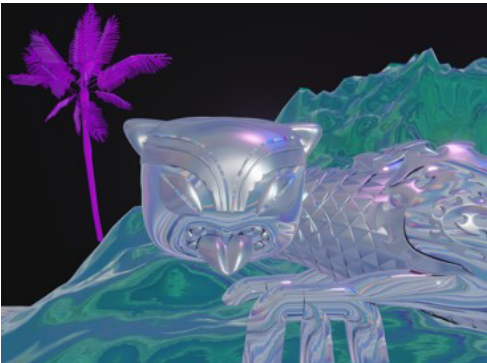
—  
KAHURANGIARIKI SMITH  
—

In celebration of Matariki, Kahurangiariki Smith presents a specially curated collection of Taniwha works, showcasing both cherished pieces from the past and new creations to welcome the arrival of the New Year.

Kahurangiariki’s waka are Te Arawa, Tainui, Takitimu, Horouta and Mataatua. Having been raised with traditional Māori values, she has a keen interest in her heritage, and the stories of her ancestors.

ROOM 10  
21 JUN - 12 JUL

OPENING EVENT  
SAT 21 JUN, 6 - 9PM





MATARIKI AFTER DARK |  
MATARIKI I TE PŌ

Join us for a special evening of creativity, connection, and celebration to welcome the Māori New Year.

Discover a lively Māori Makers Market, showcasing taonga from local artists. Experience five contemporary exhibitions by Kahurangiariki Smith, Matangireia Yates-Francis, Tui Hirabayashi, Marie Hemo Titi Mapa, Ngā Rangatahi Toa and Paige Nebbeling. Enjoy hāngī, refreshments, live music, performances, and hands-on artmaking workshops for all ages.

This event is free and open to all. Nau mai, haere mai. More details coming soon!

WHEN     SAT 21 JUN  
             6 - 9PM  
COST     FREE



IPU WHENUA – KŌRERO  
AND CLAY CREATIONS

KAIAKO: RHONDA HALLIDAY  
FACILITATOR:  
CHANTEL MATTHEWS

This workshop invites participants to create a sacred, personalised clay vessel (ipu whenua) exploring our connection to the land. Using hand-building techniques, participants will craft and decorate an unfired vessel to explore concepts of holding something precious - whenua (placenta), pita (umbilical cord), koiwi (bones), or ashes. Unfired clay allows the vessel to return to Papatūānuku. Bring meaningful items for imprinting and engage in kōrero on these kaupapa. This process honours whenua ki te whenua, the cycle of returning to the land.

WHEN     SUN 22 JUN  
             11AM - 3PM  
COST     \$100  
CLASS    12 MAX  
ENROL    STUDIOONE.ORG.NZ  
MATERIALS INCLUDED



MATARIKI FESTIVAL

PAINTING WITH  
ONEONE (SOIL)

—  
STACEY NOEL  
—

The workshop will involve learning to create paint from Oneone - soil, and painting on Harakeke paper. Participants will create symbols representing loved ones who have passed on, to honor their spirit and the participant's courage during this time of Matariki.

Stacey is a secondary teacher, arts facilitator, artist, traveller and most importantly a mum. With 30 years of teaching in various spaces, She has developed a love of supporting people to tell their stories.

WHEN     SAT 21 JUN  
             11AM - 3PM  
COST     \$50  
CLASS    12 MAX  
ENROL    STUDIOONE.ORG.NZ  
MATERIALS INCLUDED



POUNAMU REI NIHO TOOTH  
PENDANT WORKSHOP

—  
AOTEAROA BONE AND STONE  
—

Join us for an immersive workshop exploring the traditions of Rei Niho Paraoa/Tohora, pendants made from whale teeth. These taonga, with roots in Eastern Polynesia, connect us to the first adventurers who voyaged to Aotearoa. In this hands-on experience, you will learn the art of crafting contemporary Pounamu whale teeth pendants, inspired by the fearless navigators who explored the Pacific using the stars and ocean currents. Using grinders, drills, and sanding techniques, you'll craft your very own pendant while uncovering the stories of these ancient voyagers. A perfect blend of Māori tradition and modern craftsmanship.

WHEN     SAT 28 JUN  
             10AM - 6PM  
COST     \$60  
CLASS    10 MAX  
ENROL    STUDIOONE.ORG.NZ  
MATERIALS INCLUDED



## POI MAKING

KORORIA WITIKA

Join us for a poi-making workshop led by accomplished lifelong artist, maker and teacher Kororia Witika.

Immerse yourself in the artistry and cultural significance of poi as you learn to create your own set. Discover the beauty of poi, reflect and craft something special for your whānau.

This is a family-friendly event. Whānau of all ages are welcome to come along, whether they participate in the workshop or not.

Don't miss this engaging and meaningful workshop celebrating Māori culture, history and artistic expression!

WHEN SAT 5 JUL

11AM - 12PM

COST FREE DROP-IN OR ENROL

ENROL STUDIOONE.ORG.NZ

MATERIALS INCLUDED

## A SURFACE TO GATHER TOGETHER: HARAKEKE PAPER WORKSHOP

TE ARA MINHINNICK

Come spend time making your own harakeke paper together. This workshop will guide you through the process of sifting harakeke fiber; transforming it into a surface for reflection, offering, and remembrance.

As we move through the depths of Matariki, a time of renewal, remembrance, and setting intentions for the year ahead, this handmade paper becomes a space to hold your thoughts. Use it to write messages to those who have passed, express aspirations for the future, or record the stories and knowledge you wish to carry forward.

WHEN SAT 12 JUL

1 - 3PM

COST FREE

CLASS 12 MAX

ENROL STUDIOONE.ORG.NZ

MATERIALS INCLUDED



## QUEERS & WARES

---

### QUEER AF

---

As the days get shorter and we head into winter we'll be gathering for another cute market with a focus on creativity, community, and new beginnings. The kaupapa is supporting local, handmade and sustainable goods where possible.

WHEN SAT 31 MAY

10AM - 3PM

COST FREE

## CALL FOR EXHIBITIONS

---

Do you have a great idea for an exhibition? Are you looking for a centrally located gallery to show your work? Do you have a group show ready but just need the space? We want to hear from you.

Studio One Toi Tū welcomes innovative approaches to creative practice and offers opportunities for you to be a part of our diverse exhibition programme in 2026. The four ground floor galleries and Sidewalk Gallery can accommodate various visual art practices and are available for hire through the annual call for proposals opening on Sun 1 June and closing midnight on Sun 29 June. Get involved and submit your exhibition proposal now!

For more information about submitting your proposal contact us on [info@studioone.org.nz](mailto:info@studioone.org.nz)

WHEN 1 JUN - 29 JUN

INFO [TINYURL.COM/YP9YFA5N](https://tinyurl.com/yp9yfa5n)



TĪVAEVAE WORKSHOP:  
STITCHING  
COMMUNITY TOGETHER

—

KYANI UTIA

—

Tīvaevae are vibrant, hand-stitched quilts or appliqués from the Cook Islands, crafted by Cook Island women for centuries. They are a unique and integral part of Cook Island culture, bringing people together through their creation. In this workshop, you'll learn basic stitching techniques and work with brightly coloured fabric to create your own Tīvaevae square. By engaging in this creative process, you'll connect with the Cook Island tradition of Tīvaevae making. Tīvaevae are often gifted for special occasions, so come and create a Tīvaevae for someone special. This programming is a part of NZ Cook Islands Māori Language week.

WHEN     FRI 8 AUG  
           11AM - 1PM

COST     FREE

CLASS    12 MAX

MATERIALS INCLUDED

ENROL    STUDIOONE.ORG.NZ

MATERIALS INCLUDED



EXODUS: THROUGH THE  
DOORS OF TIME // PŪRERE:  
NĀ NGĀ KŪWAHA O TE WĀ

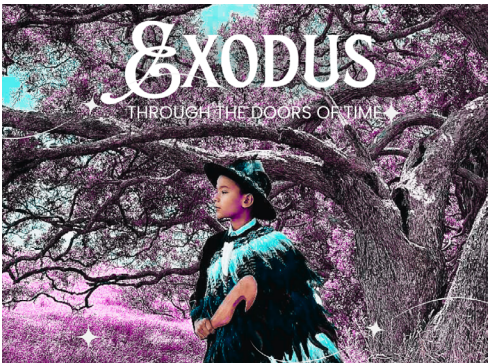
—

GROUP SHOW

—

*Exodus: Through the Doors of Time* is a multi-generational exhibition marking the 50th anniversary of Dame Whina's 1975 Land March – Te Hikoī. Featuring nine indigenous artists from Aotearoa, The Pacific, Turtle Island, and Alaska, the exhibition follows the stages of life through seven doors and one mokopuna cloak. Through photography, visual art, and storytelling, Exodus honours whakapapa, wairua, and whānau, capturing the resilience, creativity, and connection that shape our shared history and future.

ROOM 10  
WHEN     10 - 15 SEP



ZOË URNESS, 2025



AUCKLAND HERITAGE  
FESTIVAL 2025

AUCKLAND AT PLAY:  
A CELEBRATION OF  
SPORT AND PLAY

The Auckland Heritage Festival returns from 20 September to 5 October 2025, with this year's theme, Auckland At Play, shining a spotlight on our city's rich history of sport, recreation and community connection. In 2025, we also mark a special milestone- the 75th anniversary of the 1950 Empire Games. These Games were the first after a 12-year pause due to the World War II. Auckland welcomed 590 athletes from 12 nations, with over 246,000 spectators attending events across the city. This year's festival will honour the legacy of this major international event and celebrate the diverse ways people in Tāmaki Makaurau have played, competed, and come together over the years.

WHEN 20 SEP - 5 OCT  
INFO ILOVEPONSONBY.CO.NZ/AHF25



AIGA WHĀNAU PUA  
{THE PUA FAMILY}

SOKA SAMOA STORIES

Led by the charismatic Reverend Mua Strickson-Pua and his siblings, this week-long event celebrates the family's sporting history across four generations and five countries. Through an art exhibition, sports history walk, multimedia presentations, and guest speakers, they will honour ancestors (Tupuga Tupuna) and share their family's stories.

WHEN 20 SEP - 26 SEP  
INFO ILOVEPONSONBY.CO.NZ/AHF25



## LEYS INSTITUTE AT PLAY EXHIBITION

—  
An exhibition showcasing a collection of historical photographs taken during the early years of the Leys Institute in Ponsonby. The images centre around the theme of play and sport, capturing moments of leisure, community gatherings, and physical activities that reflect the social life of the time. Free event.

Image Credit: Auckland Libraries  
Heritage Collections, 7-A05888

ROOM 10

WHEN 27 SEP - 4 OCT

INFO [ILOVEPONSONBY.CO.NZ/AHF25](http://ILOVEPONSONBY.CO.NZ/AHF25)



## OUT & PROUD: IMAGES OF LGBTQ EVENTS ON PONSONBY RD IN THE 80S AND 90S

—  
CURATED BY HISTORIAN  
EDWARD BENNETT

—  
Celebrate the courageous spirit and lively culture of Ponsonby's queer community in the 1980s and 1990s. This exhibition showcases a time of daring self-expression and activism. Through photographs and artifacts, "Out & Proud" looks back at the community organisations, events, and nightlife scene, and honours a community that helped shape Ponsonby into the suburb that now shines with Pride.

Image Credit: Auckland Libraries  
Heritage Collections, 835-26,  
Julia Durkin

ROOM 10

WHEN 27 SEP - 4 OCT

INFO [ILOVEPONSONBY.CO.NZ/AHF25](http://ILOVEPONSONBY.CO.NZ/AHF25)



JULIA DURKIN

# EXHIBITIONS



## TŪHONONGA: CO-OCCUPYING BETWEEN RANGI AND PAPA

MATANGIREIA YATES-FRANCIS

*TŪHONONGA* explores the integration of architecture and the natural world, guided by Tikanga Māori to redefine how we co-occupy space with wider ecologies. Grounded in Māori knowledge and bridging Te Ao Māori and Te Ao Pākehā, it envisions a cohesive future where built environments foster biodiversity, cultural identity, and thriving communities. By prioritising the whenua and creating spaces that are authentically Māori, *TŪHONONGA* offers iwi, hapū, and whānau innovative pathways for community living and housing on ancestral land. Through this, it reclaims and reimagines living environments, championing a harmonious relationship with nature and a flourishing cultural connection.

GALLERY 1 & 2  
12 JUN - 10 JUL

OPENING EVENT  
WED 11 JUN, 5PM



MATANGIREIA YATES-FRANCIS, 2025

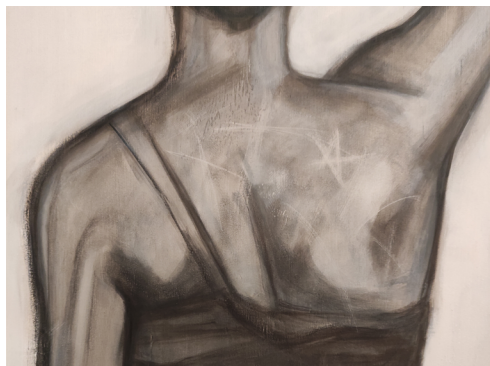
## DEDWOOD

MARIE HEMO TITI MAPA  
& TUI HIRABAYASHI

*DEDWOOD* reclaims the colonial and Māori names of Ponsonby (Te Tahī Rimu), examining histories of erasure and resilience shaped by gentrification and displacement. Using industrial materials like steel, timber, and plywood, it embodies the weight of these transformations, reflecting on how colonisation and urban development have shaped and divided ownership, sovereignty, and belonging. It affirms that connection to whenua, moana and awa is the foundation of Aotearoa's identity and future, declaring that Māori and marginalised cultures are not dead—they are living, breathing, evolving, and essential to the ongoing creation of this land.

GALLERY 3  
12 JUN - 10 JUL

OPENING EVENT  
WED 11 JUN, 5PM



TUI HIRABAYASHI, 2024

## HĀ - BREATHE

—  
NGĀ RANGATAHI TOA  
—

HĀ—it is life, connection, and wairua. This rangatahi co-designed exhibition explores Hā as the unseen force that binds us to whakapapa, our creator, and all living beings.

Rangatahi express their relationship with Hā through mixed media as a source of grounding, energy, and renewal. Manuhiri are invited to experience Hā through their eyes, to feel its presence and embrace its stillness.

Hā reminds us that in the pause, there is beauty, and we often overlook the subtle moments that hold the most meaning.

Hā ki roto, Hā ki waho.

GALLERY 4  
12 JUN - 10 JUL

OPENING EVENT  
TUE 10 JUN, 6PM

## MOEMOEĀ

—  
PAIGE NEBBELING  
—

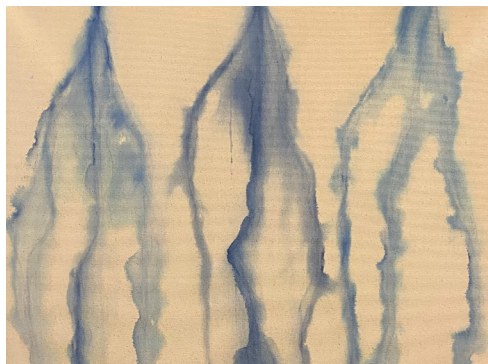
In Māori tradition, *moemoeā* (dreams) are more than subconscious visions; they serve as prophecies, weaving together thoughts, wairua (spirit), and personal narratives. Historically, *moemoeā* guided navigation, forewarned of illness or battle, and connected the living with those who have passed. Through oil painting, the artist reimagines *moemoeā* as a meditative conduit—a portal where emotions and identity converge. This work highlights the historical significance of *moemoeā*, drawing from both the artist's tūpuna and their own lived experiences.

SIDEWALK GALLERY  
12 JUN - 10 JUL

OPENING EVENT  
WED 11 JUN, 5PM



EMILY RAFTERY, 2025



PAIGE NEBBLING, 2025

## DIASPAURA

### GROUP SHOW

*diaspAURA* is a vibrant celebration of Pacific and African artistry, bridging cultural expressions within Auckland's broader community. *diaspAURA* brings together a dynamic range of painting, photography, poetry, and music. This exhibition embodies the mana of generational traditions, fused with contemporary experiences. The works highlight the perspectives of young minority groups navigating life in Aotearoa, aiming to create connections within the Pacific, Black, and wider artistic communities.

GALLERIES 1 & 2

24 JUL - 21 AUG

OPENING EVENT

WED 23 JUL, 5PM



BRONSON PRICE, 2025

## A DAY IN THE LIFE

ANDREW BLYTHE,  
PRESENTED IN  
ASSOCIATION WITH  
TOI ORA LIVE  
ARTS TRUST

*A Day in the Life* presents bold, expressive drawings by Andrew Blythe, created during classes at Toi Ora Live Arts Trust. Using charcoal and pastel, Andrew captures figures with confident, continuous lines. His creative process is one of total focus, like flying a plane, where he is fully present in the moment. These works offer a glimpse into Andrew's disciplined daily routine and the meditative intensity of his creative life.

GALLERY 3

24 JUL - 21 AUG

OPENING EVENT

WED 23 JUL, 5PM



ANDREW BLYTHE, 2025

## WOVEN HISTORIES

### GROUP SHOW

*Woven Histories* brings together artists Elisha Oloapa, A'aifou Portman, Isaiah Swann, Phoenix Mikaele, and Taimara Hook who reimagine ancestral lands using Hiapo, Siapo, Ngatu, Masi, and Kōrari. Using earthen dyes on flax and mulberry bark, stories of diaspora are told through patterns and symbols. The works bridge traditions and cultures to celebrate the artists' heritage and create a visual record of cultural stories.

GALLERY 4

24 JUL - 21 AUG

OPENING EVENT

WED 23 JUL, 5PM



TAMAIRA HOOK, 2025



PASITHEA  
(RE-STAGED)

—  
JO BRAGG  
—

The first in a series, *Pasithea (re-staged)* examines the history of performance art through a contemporary Queer lens. The work is inspired by both the concepts and aesthetics of Marina Abramović and Ulay's durational performance *Rest Energy*. *Pasithea (re-staged)* reinstates the timeless importance, tension, and ephemerality of connection.

SIDEWALK GALLERY  
24 JUL - 21 AUG

OPENING EVENT  
WED 23 JUL, 5PM



JO BRAGG, 2025

IDLE:IDYLL

—  
KEANI REWHA AND  
RITA TAKEUCHI  
—

*idle:idyll* centres on the rural, exploring idle moments of everyday life. Rita Takeuchi's hand-carved wooden frames are in response to Keani Rewha's paintings of rural environments. Together, the paintings and frames reflect on the many perspectives of the rural idyll, focusing on intimate and often overlooked everyday moments.

GALLERY 1  
28 AUG - 25 SEP

OPENING EVENT  
WED 27 AUG, 5PM



KEANI REWHA &  
RITA TAKEUCHI, 2025

EBB AND FLOW:  
FRAGMENTS OF  
MATRESCENCE

—  
SANDRA RIZZO  
—

*Ebb and flow* explores the physical and emotional transformation in pregnancy and early motherhood. The paintings reject stereotypical views that romanticize, condemn, or undervalue motherhood. They focus on the ambivalent and transformative nature of the maternal experience, weaving together personal and collective memories. Figuration, abstraction, and collage come together to reveal deeper dimensions of the transition to motherhood.

GALLERY 2  
28 AUG - 25 SEP

OPENING EVENT  
WED 27 AUG, 5PM



SANDRA RIZZO, 2025

## DOUBLE EXPOSURE – CREATING WITH SPIRIT

—  
LINDA GILBERT  
—

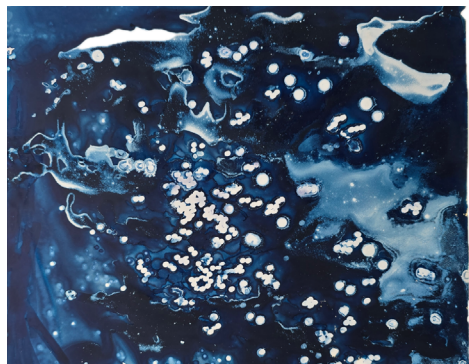
Siblings Linda Gilbert and the late Paul Gilbert present *Double Exposure – Creating with Spirit*. Linda has curated a selection of Paul's early photographs and responds with intuitive 'energy maps' made using the cyanotype photographic process. Notions of life, death, memory, legacy and archiving are explored in this dialogue between siblings. With thanks to Creative New Zealand and the Auckland Museum who are supporting Linda to archive Paul's collection.

GALLERY 3

28 AUG - 25 SEP

OPENING EVENT

WED 27 AUG, 5PM



LINDA GILBERT, 2025

## EXPRESSIONS/NGĀ AUAHATANGA Ō TE TĀNGATA

—  
ŌWAIKARA COMMUNITY CLUB  
—

This exhibition showcases artworks by members of Ōwairaka Community Club. Ōwairaka Community Club is a creative, non-clinical social space for adults with lived experience of mental health issues. They believe well-being is maintained and enhanced through creativity. The club's kaupapa is based on manaakitanga, whanaungatanga, and kotahitanga, with tutors guiding and facilitating exploration of individual and collective creativity. This exhibition features artists that have developed their own practice within this space.

GALLERY 4 & SIDEWALK GALLERY

28 AUG - 25 SEP

OPENING EVENT

WED 27 AUG, 5PM



ŌWAIKARA COMMUNITY CLUB, 2025

MAKE



VAL ONG

—  
THROW & PINCH  
—

Join Val for a relaxing six-week evening ceramics course where you'll explore both hand-building and wheel-throwing techniques. Through demonstrations and hands-on learning, you'll have fun experimenting with clay and discovering its endless possibilities. Finished works will be fired and ready for collection once completed.

WHEN      MON  
              6 - 9PM  
STARTS   14 JUL  
COST      \$395  
LENGTH   6 WEEKS  
CLASS     9 MAX  
INCLUDES UP TO 10KG CLAY,  
GLAZES AND FIRINGS  
ENROL    STUDIOONE.ORG.NZ



VAL ONG

—  
THROW IT DOWN REMIX  
—

This course is open to beginners, intermediate potters, and beyond! Learn to throw on the wheel, refine your technique, and take on new challenges. Beginners will focus on centering, throwing cylinders, and bowls, while intermediate students will tackle lidded jars, noodle bowls, and vases to push their skills further. Finished works will be fired and ready for collection once completed.

WHEN      TUE  
              6 - 9PM  
STARTS   15 JUL  
COST      \$395  
LENGTH   6 WEEKS  
CLASS     9 MAX  
INCLUDES UP TO 10KG CLAY,  
GLAZES AND FIRINGS  
ENROL    STUDIOONE.ORG.NZ



VAL ONG

—  
THROW IT DOWN

Immerse yourself in this intensive six-week course designed for beginners keen to learn the fundamentals of contemporary wheel-thrown ceramics. You'll practice creating various domestic shapes, including plates, bowls, and cylinders. Finished works will be fired and ready for collection once completed.

WHEN      WED  
             6 - 9PM  
STARTS    16 JUL  
COST      \$395  
LENGTH   6 WEEKS  
CLASS     9 MAX  
INCLUDES UP TO 10KG CLAY,  
GLAZES AND FIRINGS  
ENROL     STUDIOONE.ORG.NZ



VAL ONG & GEORGIA HOOD

—  
DROP-IN CERAMICS STUDIO

Looking for time to focus on a project or need some technical advice? Join us on Fridays to work independently in our fully equipped ceramics studio. These weekly drop-in sessions are perfect for practitioners seeking studio space to develop their own projects or hone their skills. You'll have support from one of our wonderful technicians, who will be on hand to offer basic technical guidance. Our technicians, Val Ong and Georgia Hood, will be sharing the role - with Georgia stepping in while Val is away on an artist residency.

WHEN      FRI  
             12 - 6PM  
STARTS    18 JUL - 19 SEP  
COST      \$5 PER PERSON, PER HOUR  
BRING YOUR OWN TOOLS, MATERIALS  
AND PROJECTS TO WORK ON

PUBLIC BISQUE FIRING:  
FRI 5 SEP

PUBLIC GLAZE FIRING:  
FRI 12 SEP





SIRIPORN  
FALCON-GREY

TASTER POTTERY  
WORKSHOPS

This relaxing Saturday morning workshop will teach you pottery fundamentals for hand-building with clay. Use the slab technique to create a vessel, plate, or simply experiment and go with the flow. All pieces will be bisque & glaze fired and ready for pick up at a later date. Suitable for ages 8+ and beginners.

WHEN SAT 26 JUL  
OR SAT 23 AUG  
10 - 11.45AM

COST \$75

CLASS 12 MAX

MATERIALS INCLUDED

ENROL

FALCONGREYCERAMICS.COM

SIRIPORN  
FALCON-GREY

MINDFULNESS  
POTTERY  
WORKSHOPS

Learn the Pinch Pot Technique in this immersive hand-building pottery workshop. These workshops are catered to learning the basic pottery techniques for hand-building with clay. Use the themed technique to create a bowl, trinket dish or simply experiment and go with the flow. All pieces will be bisque & glaze fired and ready for pick up at a later date. Suitable for ages 8+ and beginners.

WHEN SAT 9 AUG OR  
SAT 13 SEP  
10 - 11.45AM

COST \$75

CLASS 12 MAX

MATERIALS INCLUDED

ENROL

FALCONGREYCERAMICS.COM

ADULT 313

NAOMI AZOULAY

A FEMINIST  
COLLAGE  
WORKSHOP

A dynamic, hands-on workshop of an intuitive collage-making process inspired by feminist themes. Through the selection of images, colours, and textures, we will challenge dominant narratives, reclaim the female gaze, and construct powerful visual stories. This workshop invites creative experimentation and personal expression—no prior experience is needed, only curiosity and a willingness to explore, disrupt, and create.

WHEN SAT 23 AUG  
10AM - 2PM

COST \$75

CLASS 18 MAX

MATERIALS INCLUDED

ENROL STUDIOONE.ORG.NZ



BETH SERJEANT  
—  
DROP-IN PRINT STUDIO  
—

Come along and work independently in our printmaking studio. Studio One Toi Tū has three print presses available, including a large-scale printing press, and we want our community to utilise them.

Bring your own projects and work alongside like-minded creatives. Our longstanding printmaking tutor, Beth Serjeant will be able to provide technical advice and some limited materials will be available.

WHEN     TUE  
           10AM - 2PM  
           15 JUL - 16 SEP  
COST     \$5 PER HOUR  
BRING YOUR OWN TOOLS, MATERIALS, AND  
PROJECTS TO WORK ON  
ENROL    STUDIOONE.ORG.NZ



INA ARRAOUI  
—  
WOODCUT 101  
—

Curious to explore the graphic art of woodcut prints? This four-week course is designed as an introduction to the tools and techniques for woodblock printing. You'll be guided through the basic techniques of carving, how to use a variety of mark-making techniques for visual effects, inking and printing on a press. The course will cover several approaches to woodcut printing, including multiblock printing, repeat patterns, layering and jigsaw printing.

WHEN     MON  
           6 - 9PM  
STARTS    14 JUL  
LENGTH   4 WEEKS  
COST      \$280  
CLASS     10 MAX  
MATERIALS INCLUDED  
ENROL     STUDIOONE.ORG.NZ



JESSIE KANJI

PATTERN PLAY: A  
COLLABORATIVE SCREEN  
PRINT WORKSHOP

Experience a hands-on exploration of colour theory, pattern making, and the timeless craft of silk-screen printing with artist Jessie Kanji. These workshops invite you to mix, layer, and remix pattern. A curated selection of pre-exposed screens will be available for you to experiment with, offering the chance to create original prints on paper. Want to take it further? Bring along your own t-shirts, garments, or smooth flat fabric and transform them into wearable works of art. Whether you're a seasoned printer or a curious beginner, this collaborative workshop is all about curiosity, joy, and the transformative power of print.

WHEN SAT 19 JUL OR SAT 26 JUL  
1 - 4PM  
COST \$40  
CLASS 14 MAX  
MATERIALS INCLUDED, BRING  
CLOTHING TO SCREENPRINT ON  
ENROL STUDIOONE.ORG.NZ



ALVIN XIONG

REALISTIC DRAWING &  
PORTRAIT OIL  
PAINTING CLASS

Unleash your artistic potential as we delve into traditional drawing techniques. From outlines and shading to texture and perspective, we'll capture the likeness of reference photographs. Join us to refine your skills, unlock new horizons, and create stunning artworks that leave a lasting impression.

WHEN THU  
12.30 - 3PM  
STARTS 24 JUL  
LENGTH 8 WEEKS  
COST \$450  
CLASS 10 MAX  
ADDITIONAL MATERIALS LIST WILL BE  
PROVIDED ON ENROLMENT.  
ENROL STUDIOONE.ORG.NZ



MARK WHIPPY

—  
PORTRAIT DRAWING 101  
—

This course will introduce you to the head drawing methods taught by masters Frank Riley, Andrew Loomis and John Asaro. Through this you will learn how to see the head in shapes and planes for doing portrait paintings and drawings and learn how to accurately see proportions, where to place the features on a face. By the end you will be able to capture portraits with confidence, speed and efficiency. In the long term, using the charcoal pencil as a brush will also teach you how to paint when you move on to other mediums. This portrait drawing class occasionally includes live models for observation and practice.

WHEN     TUE  
           6.30 - 8PM

STARTS   15 JUL  
LENGTH   8 WEEKS

COST     \$260  
CLASS    10 MAX

ADDITIONAL MATERIALS LIST WILL BE  
PROVIDED ON ENROLMENT  
ENROL    STUDIOONE.ORG.NZ



MARK WHIPPY

—  
LIFE DRAWING 101  
—

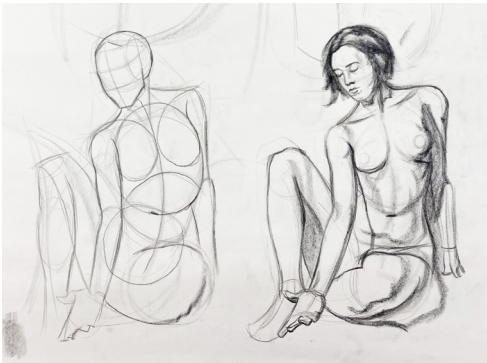
This course will be an introduction into figure drawing where we will learn how to construct more realistic figures by learning about gesture, structure, and proportion. We will learn how to convey a sense of gesture to give flow and life to the figure and structure to give a sense of 3D form. We will also learn about how to construct a figure in proportion by finding key landmarks on the figure helping us to map the figure out. This class includes life drawing models for drawing practice.

WHEN     WED  
           6.30 - 8PM

STARTS   16 JUL  
LENGTH   8 WEEKS

COST     \$260  
CLASS    10 MAX

ADDITIONAL MATERIALS LIST WILL BE  
PROVIDED ON ENROLMENT  
ENROL    STUDIOONE.ORG.NZ







VAL ONG

FUTURE POTTERS CLUB

Ignite your child’s creativity and let them discover the wonders of clay with Future Potters Club! In our weekly hands-on classes, your child will create imaginative creatures to scenes from a movie. Designed to spark imagination, our classes offer a chance to make one-of-a-kind pottery while developing artistic skills. Join us today!

AGE 6 - 12  
WHEN TUE, 4 - 5.30PM  
STARTS 15 JUL  
LENGTH 6 WEEKS  
COST \$185  
CLASS 12 MAX  
MATERIALS INCLUDED  
ENROL STUDIOONE.ORG.NZ



TANJA NOLA

CERAMIC PLAY

Enjoy an afternoon of making and play with clay. Choose your own subjects and ideas while learning how to handle and build with this wonderfully expressive medium, Make! Break! Explore!

Wear messy clothes. Snacks provided.

AGE 7 - 12  
WHEN THU 2 OCT  
2 - 5PM  
COST \$120  
CLASS 8 MAX  
MATERIALS INCLUDED  
ENROL STUDIOONE.ORG.NZ



TANJA NOLA & VAL ONG

CASUAL DROP-IN  
ART GROUP

The Casual Drop-In Art Group invites school leavers to immerse themselves in a relaxed and friendly environment that includes on-site galleries, studios, art classes and communal outdoor space. You can join us for an hour or stay for four in the dedicated sculpture and making studio. There will be an opportunity to explore your own interests with clay, drawing and painting media or bring along your own work. Experienced artists will be available to guide your ideas providing insights and techniques to help you. All materials, equipment and clay firings will be provided. No need to book, just drop in and enjoy some art making time with others.

AGE	YOUNG ADULTS 17 - 25
WHEN	SAT 3 MAY
	SAT 7 JUN
	SAT 5 JUL
	2 - 6PM
COST	FREE
ENROL	STUDIOONE.ORG.NZ



TANJA NOLA

TEEN ARTWORK

In a fully equipped art studio, students work progressively to develop their own visual language. Experienced artist and tutor, Tanja, supports students and encourages research and exploration into art history, music, and popular culture. Directed by individual needs, students discover their creative potential and build confidence in their art practice. This course is ideal for teens at all skill levels and is a great bridge for those considering further education in the arts. This term offers a ceramics-focused exploration of clay, complemented by drawing and colour work, and will conclude with an exhibition in our Sidewalk Gallery.

AGE	13 - 17
WHEN	THU, 4 - 6PM
STARTS	31 JUL
LENGTH	7 WEEKS
COST	\$395
CLASS	8 MAX
MATERIALS INCLUDED	
ENROL	STUDIOONE.ORG.NZ





## CREATIVE MATTERS

Creative Matters holiday art workshops are educational with a focus on a rich development of the creative process, encouraging individual creativity and artistic interpretation as well as time to explore and experiment with ideas and visual arts techniques. We believe in the benefits of vertical age grouping and cater for the individual needs and developmental stages of each child. Keep an eye on [www.creativematters.co.nz](http://www.creativematters.co.nz) to see dates and themes.

### JUL SCHOOL

#### HOLIDAY SESSIONS

TUE 1, WED 2, TUE 8,  
WED 9, THU 10

[CREATIVEMATTERS.CO.NZ](http://CREATIVEMATTERS.CO.NZ)

KIDS 316

## VAL ONG

### WORLD OF NINTENDO

Embark on an adventure as we dive into the world of Nintendo! We will be creating masterpieces inspired by Nintendo characters. From Mario and Luigi to Pikachu and Link, the possibilities are endless. You'll learn hand-building techniques such as slab construction, pinch pots, and coiling to bring your favourite characters to life. All works will be glazed-fired and ready for collection at a later date.

AGE 5 - 11

WHEN WED 2 & THU 3 JUL  
10AM - 2PM

COST \$185

ENROL [STUDIOONE.ORG.NZ](http://STUDIOONE.ORG.NZ)

KIDS 317

## VAL ONG

### INTERGALACTIC ADVENTURE

Get ready to journey to the stars and beyond! Over two days, you'll create an amazing outer space explorer set. Build a rocket ship, create alien planets with craters and swirling patterns, and sculpt tiny astronaut figures to explore your galaxy. Bring your imagination to life with unique designs, shimmering stars, and vibrant cosmic landscapes. By the end, you'll have your very own clay universe to take home. All works will be fired and ready for collection at a later date.

AGE 5 - 11

WHEN WED 9 & THU 10 JUL  
10AM - 2PM

COST \$185

ENROL [STUDIOONE.ORG.NZ](http://STUDIOONE.ORG.NZ)



TERESA PETERS  
—  
**MAD SCIENTIST  
ANIMAL  
MUG MAYHEM!**  
—

What do you get if you cross a dinosaur and a tiger with a fish? This fun ceramics lab will get you exploring hand built clay making and glazing in fun and surprising ways. Work together "exquisite corpse style," with each person creating a different head, body, and tail, to form surprising, never-before-seen creature. You'll take home a colorful, glazed, and fired Mad Scientist Mug.

AGE 6 - 12  
WHEN MON 22 &  
TUE 23 SEP  
10AM - 3PM  
COST \$185  
CLASS 12 MAX  
MATERIALS INCLUDED  
ENROL STUDIOONE.ORG.NZ



TERESA PETERS  
—  
**MAKE A MONSTER  
MOVIE AND MASK!  
WHERE THE WILD  
THINGS ARE  
WORKSHOP**  
—

Make your own Monster mask and movie! Lights, action, camera! Design your own unique paper mâché monster mask just in time for Halloween. Then form your own movie crew and learn how to make your own movie. Together write your script, rehearse and then ACTION, film your own monster movie. Things are about to get wild!

AGE 6 - 12  
WHEN WED 24, FRI 26 SEP  
WED 1, FRI 3 OCT  
10AM - 3PM  
COST \$185  
CLASS 12 MAX  
MATERIALS INCLUDED  
ENROL STUDIOONE.ORG.NZ



TERESA PETERS  
—  
**MONSTER  
MUG MAYHEM!  
HALLOWEEN  
CERAMICS!**  
—

Design your own Monster Mug just in time for Halloween! Create your own hand built clay Monster Mug with creature features. Glaze up - bring you Monster Mayhem Mug to life. Take home a colourful glazed and fired ceramic Mug. The perfect ooky spooky gift or accessory this Halloween!

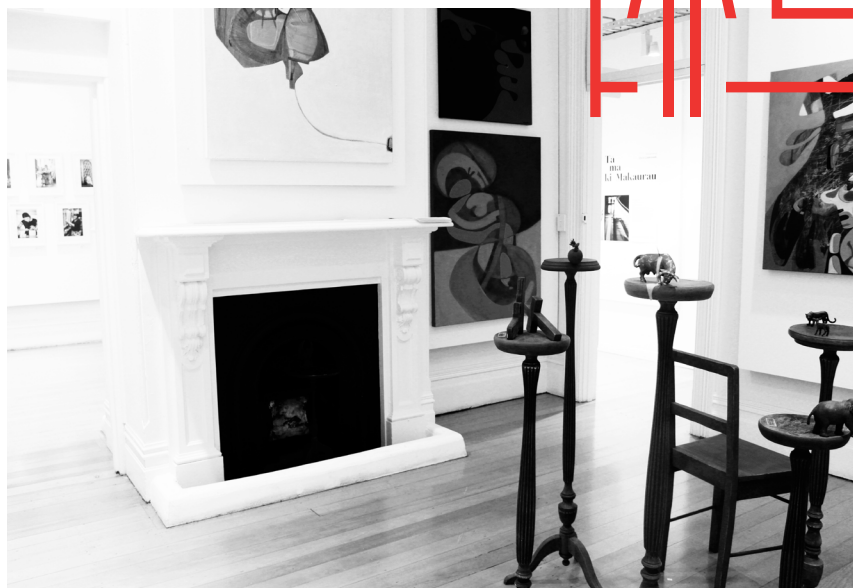
AGE 6 - 12  
WHEN MON 29 &  
TUE 30 SEP  
10AM - 3PM  
COST \$185  
CLASS 12 MAX  
MATERIALS INCLUDED  
ENROL STUDIOONE.ORG.NZ





# HIRE





## CALL FOR PROPOSALS

—

## EXHIBITIONS

—

Proposals for our four ground floor galleries are accepted annually via an online application process. The next call for proposals will open in June 2025 for exhibitions in 2026.

## GALLERIES

—

We have an impressive selection of exhibitions in our four gallery spaces programmed throughout the year. Bookings for the galleries can be made by submitting an exhibition proposal. Contact us for more information about our galleries and keep up to date with our current exhibitions at [Facebook.com/StudioOneToiTu](https://www.facebook.com/StudioOneToiTu).



## BOOK ONLINE

—

## VENUE HIRE

—

To find out how we can support you, visit our online bookings page at [bookings.aucklandcouncil.govt.nz/facility/studio-one-toi-tu](https://bookings.aucklandcouncil.govt.nz/facility/studio-one-toi-tu)

## ROOMS AND EVENT SPACE

—

Studio One Toi Tū has a variety of adaptable indoor and outdoor spaces to meet your needs, bring your idea to life and open your event to the community. Whether you're a designer looking for a space to show your latest collection, a book group seeking a central meeting place, or if you are looking for something more exciting we have the space for you.

## VENUE HIRE

We offer a range of room hire options available at an hourly rate. Come in to view and discuss how we can assist you to find a space that suits your needs, we are always happy to show you around. To book a space please visit [booking.aucklandcouncil.govt.nz/facilities](http://booking.aucklandcouncil.govt.nz/facilities).

### MEETING AND EVENT SPACE

---

Studio One Toi Tū has a variety of adaptable indoor and outdoor spaces to meet your needs, bring your idea to life and open your event to the community. Whether you're a designer looking for a space to show your latest collection, a book group seeking a central meeting place, or if you are looking for something more exciting we have the space for you. To find out how we can support you, visit or call us on 09 376 3221.

### HIRE RATES

---

We have a range of room hire options available at an hourly rate\*. Come in to view and discuss how we can assist you to find a space that suits your needs, we are always happy to show you around.

\* A community rates discount is available by application

## SPACES FOR HIRE

### ROOM 5

---

A versatile meeting, workshop and function room with heating and air conditioning.

### ROOM 6

---

A sunny versatile meeting, workshop and function room with views onto the rear deck.

### ROOM 10

---

A large clean studio with options. It can be hired as a shared studio with up to 12 desks, a rehearsal room, for conferences, seminars, workshops, pop-up exhibitions, film screenings, book launches and more. This space can be booked hourly or weekly with possibilities to hire additional rooms as break-out space.

### ROOM 11

---

Our dedicated art workshop with print press, tables, stools, chairs, easels and spot lights. This space is set up to accommodate painting and visual art practices and can be hired in its entirety at our hourly, daily or half daily rate.

### ROOM 12

---

Dedicated art workshop set up to accommodate sculpture practices. This workshop can be hired in its entirety at an hourly, daily or half daily rate.





# STUDIO ONE — TOI TŪ

## OPENING HOURS

### All spaces

Mon - Fri	10am - 6pm
Sat	10am - 4pm
Sun	Closed

### Residents

24/7 access

## ACCESS

All rooms and galleries  
are wheelchair accessible.

## LOCATION

1 Ponsonby Road,  
Auckland, New Zealand

## CONTACT

09 376 3221  
[info@studioone.org.nz](mailto:info@studioone.org.nz)  
[studioone.org.nz](http://studioone.org.nz)

[facebook.com/studioonetoiu](https://facebook.com/studioonetoiu)  
[instagram.com/StudioOne.ToiTu](https://instagram.com/StudioOne.ToiTu)

#VisitCreateMake  
#HirePlayShow  
#StudioOneTuiTu