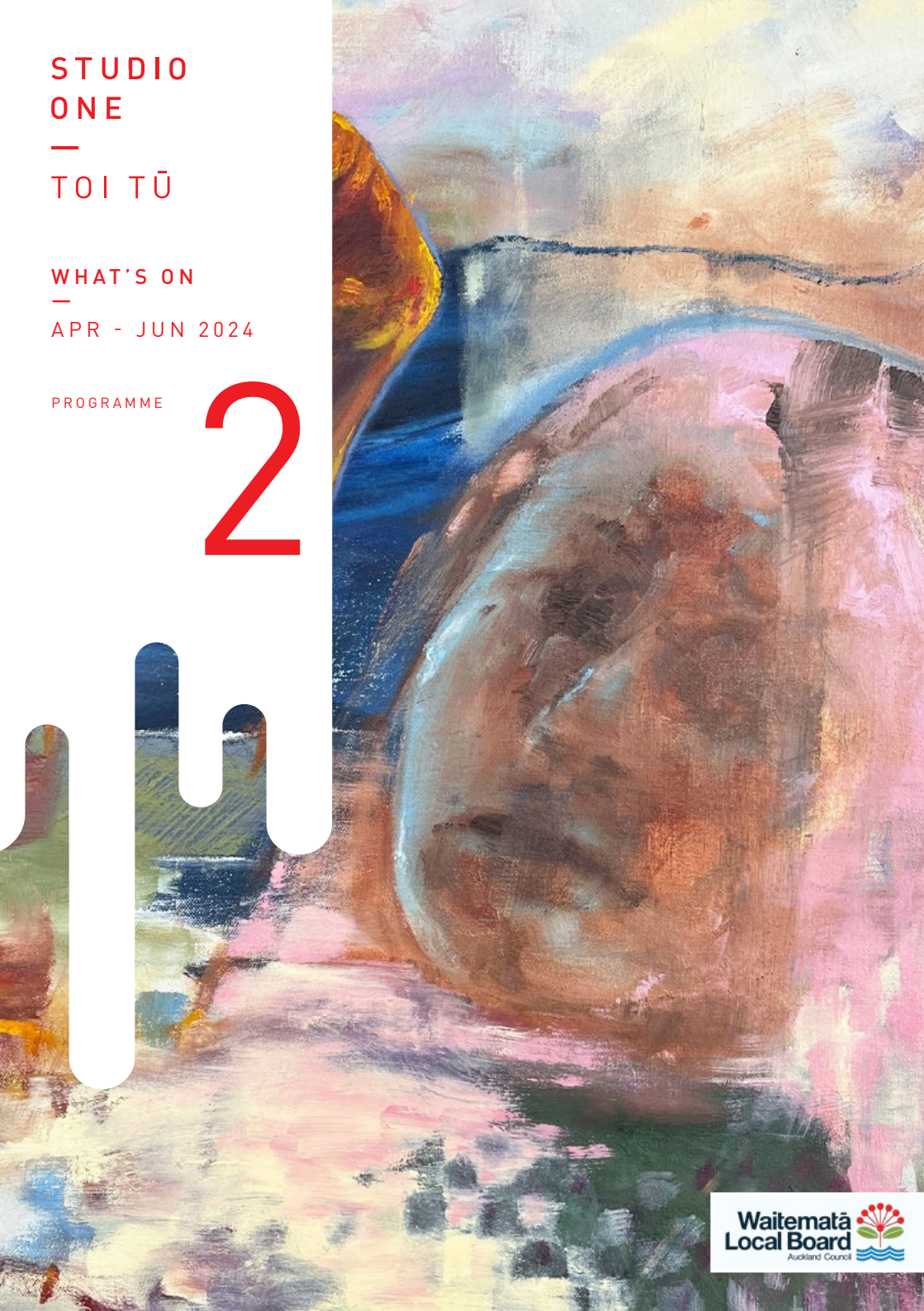


STUDIO
ONE
—
TOI TŪ

WHAT'S ON
—
APR - JUN 2024

PROGRAMME

2



KIA ORA KOUTOU,
NAU MAI HAERE MAI
STUDIO ONE TOI TŪ.

WE HAVE A UNIQUE LINE UP
OF FUN CREATIVE EVENTS
THIS AUTUMN, INCLUDING
EXHIBITIONS, TALKS, AND
WORKSHOPS. CHECK OUT
WHATS ON OFFER FOR
MATARIKI FESTIVAL AND
A WHOLE LOT MORE!

JOIN US THIS AUTUMN AND
VISIT, CREATE, MAKE
AT STUDIO ONE TOI TŪ.

FIND OUT MORE

The creative precinct at Studio One Toi Tū is a hub for making. At the intersection of arts and community, it is a place to meet, exchange, grow, learn and join a neighbourhood of creative activity at 1 Ponsonby Road.

If you would like to receive details of upcoming events and programmes, like our Facebook page, follow us on Instagram, visit our website or email us to subscribe to our newsletter.

09 376 3221
info@studioone.org.nz
studioone.org.nz

facebook.com/studioonetoitu
instagram.com/StudioOne.ToiTu

#VisitCreateMake
#HirePlayShow
#StudioOneToiTu

LOCATION

—
1 Ponsonby Road
Auckland, New Zealand



CONTENTS

OPEN	P. 8 - 13
SHOW	P. 14 - 19
MAKE	P. 20 - 31
—	
ADULTS	
JEWELLERY	P. 22
CREATIVE WRITING	P. 22
CERAMICS	P. 23 - 28
PRINTMAKING	P. 29
PAINTING	P. 29
DRAWING	P. 29 - 31
KINTSUGI	P. 31
—	
KIDS & TEENS	P. 32 - 34
SCHOOL HOLIDAYS	P. 34 - 35
—	
HIRE	P. 36 - 39

HIRE, PLAY, SHOW



VISIT, CREATE, MAKE

With opportunities for individuals and community groups through to experienced professionals, we offer a range of studio spaces for hire, offering you a place to workshop an idea, learn a new technique or sharpen your skills.

Become a part of the creative community at Studio One Toi Tū by applying to be a part of our exhibition programme, work with us as a tutor, or hire our space.

STUDIO SPACES

We have a range of studio options and are one of the few precincts in Auckland to offer access to 'messy' workshops suitable for ceramicists, sculptors and object makers. We also offer a number of open studio spaces that can be hired individually or collectively for making, meetings, workshops or temporary events.

We are located in the heart of central Auckland with free wi-fi, kitchen facilities and the possibility for 24-hour access. Contact us to find out how we can support you.

THE CELL BLOCK

The Cell Block studio spaces are private studios. Each studio comes with 24-hour access and is hired on a monthly basis.

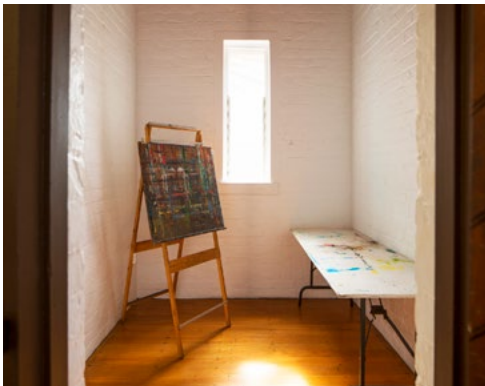
VILLA STUDIO

A shared studio space with access to the sculpture workshop is available. It comes with 24-hour access and is hired on a monthly basis.

WORKSHOP HIRE

Studio One Toi Tū has two 'messy' workshops that can be hired at an hourly rate with access to our ceramic and printmaking equipment. If you have a project and need that extra space to make it happen, this is the option for you.

Contact Studio One Toi Tū to find out more information and check the availability of our studios, gallery and spaces for hire.



CALL FOR EXHIBITION PROPOSALS

—

Studio One Toi Tū welcomes innovative approaches to creative practice and offers opportunities for you to be a part of our diverse exhibition programme. Our four ground floor galleries and Sidewalk Gallery window space can accommodate various visual art practices and are available for hire through an annual call for proposals. Our next call out will be in mid-2024 for exhibitions in 2025.

CALL FOR TUTORS PROPOSALS

—

Studio One Toi Tū welcomes new and engaging course and workshop proposals from all creative disciplines, ranging from drawing, taxidermy, weaving and printmaking. Courses and workshops can be aimed at adults, youth or proposed as part of our school holiday programme.

Successful tutors are supported through resources available at Studio One Toi Tū, including the use of fit-for-purpose studios and workshop rooms.

CALL FOR RESIDENCY

—

Our Creative Studio Residency programme is open to applicants once a year. We select between two to five projects annually. Successful applicants will be supported by Studio One Toi Tū resources, networks and mentoring. The Residency concludes with an achievable exhibition or event. 2021 Residents included Esther Toclo, Kalee Jackson and Ashleigh Taupaki.



EMMA SAVAGE, 2021

OPEN



CREATIVE TALKS, POP-UPS AND EVENTS



MAKE IT HAPPEN HERE

From creative conversations to pop-up exhibitions, there's always something happening at 1 Ponsonby Road. If you require a studio for a project or workshop, would like to showcase your work or are in need of a venue to host a special event, contact us to discuss the opportunities available for you at Studio One Toi Tū.

SOMATIC ECHOES

AUNTY'S HOUSE

Aunty's House presents *Somatic Echoes*, a unique body exploration where the art of somatic movement converges with South Asian sounds. In every sway, every rhythm, you'll find a pathway to connect with the wisdom of your ancestors, allowing their stories to echo through your movements. This immersive workshop invites you to delve into the healing power of your body's innate wisdom, unlocking a sacred space where movement becomes a vessel for emotional release and self-discovery. Safer Space Event intended to hold capacity for those who identify as: Women & Non-binary with South Asian, BIPOC and queer priority.

WHEN MON 8 APR
6 - 9PM
COST FREE
CLASS 30 MAX
ENROL STUDIOONE.ORG.NZ



**STEPS FOR DECOLONISATION;
A COLLABORATIVE
ZINE WORKSHOP**

MIGRANT MAHARANIS

How does decolonisation manifest in your own life? From creating a playlist full of nostalgic music to prioritising indigenous knowledge and connection to the land, there are many ways we all decolonise. We begin with an open conversation and a few thought-provoking prompts to self-reflect on the ways we all approach decolonisation - followed by a creative expression session. We will collate any work you are comfortable submitting into a community zine. Whether you're a writer, poet, illustrator or just want to kōrero and collage, we would love for you to join us.

WHEN SAT 13 APR
11AM - 3PM
COST FREE
CLASS 20 MAX
ENROL STUDIOONE.ORG.NZ



#ICONOGRAPH

DITA ANGELES

#Iconograph is an exhibition of paintings and scriptures that parallel the social media influencer with religious iconography. Created by Dita Angeles, her themes of ego, identity, and social presentation combine with her strong background in portraiture to create a spectacular collection of 15 oil paintings - featuring anonymous, democratically interchangeable, and ultimately disposable gods within the limits of social technology. The show also comes with its very own doctrine explaining the *#Iconograph* universe throughout 20 Scriptures, which Angeles will discuss in an artist talk.

ROOM 10
10 - 14 APR

OPENING EVENT
WED 10 APR, 5 - 7PM

ARTIST'S TALK
SAT 13 APR, 2 - 4PM

F-STOP PHOTO FAIR

AUCKLAND ZINE FEST

Celebrate all things photography with Auckland Zinefest and Chilean creatives Colectivo Narval. Be inspired by and purchase photo books, zines, prints, cameras, film and other goods from local artists and photography labs; take part in activities; and connect with photographers around the world with the projected exhibition, *Long Distance*. Everyone is welcome to join, learn and gather with the photography community.

WHEN SAT 27 APR
12 - 6PM
COST FREE

FIND OUT MORE
AUCKLANDZINEFEST.COM/F-STOP-PHOTO-FAIR



ALL THAT GLITTERS

TAMMY WILLIAMS

A darkly beautiful tale of viewer and performer, artist and audience. This photography show delves into the shimmering backstage spectacle of the Royal New Zealand Ballet dissolving the distinction between the seen and the unseen.

ROOM 10
5 - 15 JUN

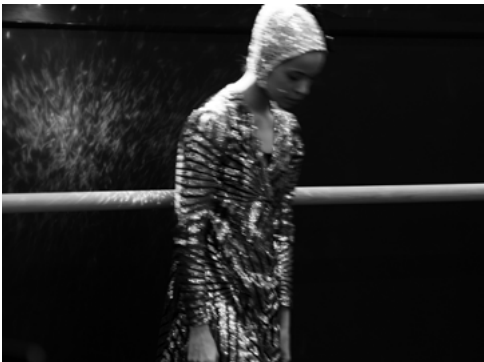
OPENING EVENT
WED 5 JUN, 6PM

MATARIKI PROGRAMMING

MATARIKI FESTIVAL

Matariki Festival heralds the Māori new year in Tāmaki Makaurau by celebrating te ao Māori through stories, film, entertainment, discussions, performance, food and art. Matariki Festival ki Tāmaki Makaurau aims to create an environment where communities can come together to reflect on and celebrate this special time of year, the season of Matariki. We are excited to celebrate Matariki as a public holiday, Friday 28 June, 2024. Mānawatia a Matariki!

WHEN 15 - 28 JUN
WHERE VARIOUS LOCATIONS



POUNAMU WORKSHOP

AOTEAROA BONE & STONE

Join Maha and learn about the practices associated with Māori toi (arts) whilst creating a pounamu Marama Taonga in this all-day workshop. Using grinders, drills, wet, and dry sanding, and polishing tools, participants will create their own pendant. You will learn binding and lashing techniques that will help you complete your mini master piece.

We are able to offer this course at a subsidised rate, the course is usually valued at \$280.

WHEN SAT 15 JUN
10AM - 5PM
COST \$60
CLASS 10 MAX
MATERIALS INCLUDED
ENROL: STUDIOONE.ORG.NZ

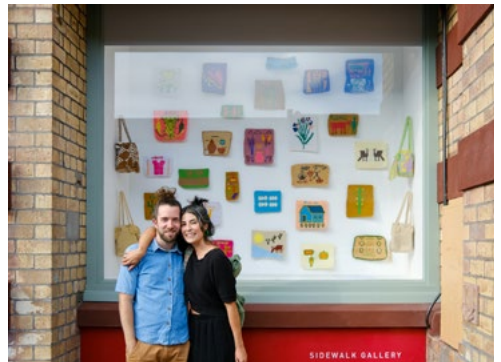
CALL FOR EXHIBITIONS

Do you have a great idea for an exhibition? Are you looking for a centrally located gallery to show your work? Do you have a group show ready but just need the space? We want to hear from you.

Studio One Toi Tū welcomes innovative approaches to creative practice and offers opportunities for you to be a part of our diverse exhibition programme in 2025. The four ground floor galleries and Sidewalk gallery can accommodate various visual art practices and are available for hire through the annual call for proposals opening on Monday 1 July and closing midnight on Monday 29 July 2024. Get involved and submit your exhibition proposal now!

For more information about submitting your proposal contact us on info@studioone.org.nz

WHEN 1 JUL - 29 JUL
INFO STUDIOONE.ORG.NZ



EXHIBITIONS



TINNED GOODS

SARAH-JANE BLAKE

The humble biscuit tin transforms into a portal, offering an escape to other worlds. Drawing inspiration from peephole dioramas and toy theatres, painted paper cutouts fill many tins, creating hidden landscapes and interior spaces. Collected from dumps, charity shops, and gifted, these tins are reminiscent of a bygone era when we shared, preserved, and delighted in occasional rare treats, that now seem outdated in our era of abundance. With a naive style and dark humour, this installation speaks to a yearning for a nostalgic past, juxtaposed with a contemplation of our environmental future.

GALLERY 1

11 APR - 9 MAY

OPENING EVENT

WED 10 APR, 5PM

FULL DIGITAL UPLOAD

OLI MATHIESEN

Full Digital Upload is an interdisciplinary exhibition challenging the constraints of accessible technology, employing AR, LiDAR, photo, and film. The series delves into AR art, utilising our phones' digital capabilities to offer visitors a distinctive and immersive experience that blends traditional art with modern technology. Stemming from Oli Mathiesen's choreographic research, the exhibition explores the intersection of technological processes and aesthetics with the body, illustrating software's endeavour to document dance by freezing movement in a still form.

GALLERY 2

11 APR - 9 MAY

OPENING EVENT

WED 10 APR, 5PM



SARAH-JANE BLAKE, 2023



OLI MATHIESEN, 2023

"I'M FINE" (I LIED)

JENNY ZHONG

"*I'm Fine*" (*I Lied*) is an immersive sculptural installation by emerging artist Jenny Zhong. The exhibition explores the hidden emotions experienced by adults, representing specific yet ambiguous emotions through irregular shapes and vibrant colours. The artwork invites viewers on a sensory journey that mirrors the ever-changing nature of our inner lives. Challenging the tendency to hide emotions, encouraging embracing discomfort and finding joy in personal struggles. The exhibition celebrates vulnerability and authenticity, emphasizing the power of honesty and self-expression to unravel, confront, challenge, and reconcile. The exhibition cultivates inner peace and self-reconciliation by providing a fresh perspective and reducing emotional intensity.

GALLERY 3

11 APR - 9 MAY

OPENING EVENT

WED 10 APR, 5PM



JENNY ZHONG, 2023

PILLOW GARDEN

HANNA SHIM

Hanna Shim's *Pillow Garden* is an immersive installation featuring oversized plant-inspired soft sculptures, transform the gallery into a sensory haven. Crafted from unconventional soft materials, these sculptures challenge the traditional gallery space. Beyond visuals, the installation weaves fragrances, sounds, and sentiments from Shim's Korean heritage into the visitor's experience. Juxtaposing the historical neglect of female textile artists with its transformative potential, *Pillow Garden* becomes a symbolic realm where marginalised perspectives thrive. This exhibit invites viewers to explore the intersection of art and sensory perception, fostering a unique and profound engagement with space, form, and identity.

GALLERY 4 & SIDEWALK GALLERY

11 APR - 9 MAY

OPENING EVENT

WED 10 APR, 5PM



HANNA SHIM, 2023

MEMORY & BELONGING

—
HINA NASIR,
YIXUAN ZHU &
MELODY RENAUD
—

This debut exhibition explores the stories of three first-generation female immigrants in Auckland, Hina Nasir, Yixuan Zhu and Melody Renaud. With their cultural backgrounds spanning across South Asia, East Asia, and Europe, their stories converge in Auckland. Through contemporary and generative art, graphic design, and motion, they investigate their relationships with their home countries and their connection to New Zealand.

GALLERY 1 & 2
16 MAY - 13 JUN

OPENING EVENT
WED 15 MAY, 5PM



HINA NASIR, YIXUAN ZHU &
MELODY RENAUD, 2024

HANGUL, IN SITU

—
JUNGIE CHOI
—

Hangul, In Situ is a graphic installation that attempts to look beyond the touchstones of our cultural canon and explore how Hangul — the official writing system of Korea — can interface with the evolving/contemporary world to form more nuanced expressions. Removing typography from a digitised space, the work reimagines the possibilities of language in relation to the physical space it occupies. Choi attempts to ask the question — how does letter forms change in relation to the space it is situated in? How do they evolve as times change?

GALLERY 3
16 MAY - 13 JUN

OPENING EVENT
WED 15 MAY, 5PM



JUNGIE CHOI, 2024

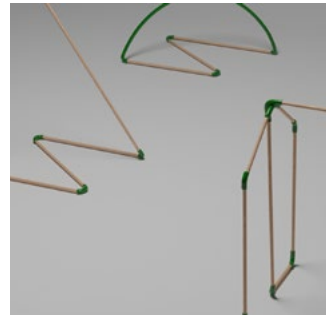
OPEN HOME

—
OLIVER CHŪN XÚ
—

Home is where dreams, thoughts, and memories unfold. Reflecting on life in Auckland's bustling CBD, XU's artwork invites individuals to pause, observe, and wander through the space, navigating the line between daydreams and reality. It echoes the refuge depicted by Chinese poet Tao Yuanming in his poem "*Drinking Wine, Part Five*", wherein he describes, "I built my cottage within the realm of men, yet it remained serene, untouched by the noise of chariots and horses..."

GALLERY 4
16 MAY - 13 JUN

OPENING EVENT
WED 15 MAY, 5PM



OLIVER CHŪN XÚ, 2024

CIRCUIT DREAM

DARRYL CHIN

'Facing a digital darkness, a curious robot ventures beyond the familiar, seeking to illuminate its town once again.'

Circuit Dream unpacks the shadows of our media landscape, where a chase for meaning ensues amidst war and noise. Employing a unique AI model trained on classic newspaper-style comics, the video installation blends contemporary image-making methods with nostalgic charm, hinting at a broader commentary on cyberspace and information consumption.

SIDEWALK GALLERY

16 MAY - 13 JUN

OPENING EVENT

WED 15 MAY, 5PM



DARRYL CHIN, 2024

WAITING FOR THE WIND'S PERMISSION

LEVI KEREAMA & FELIX PRYOR

A portrait takes a moment, alive and fleeting, and makes it still. Here, artists Levi Kereama and Felix Pryor join forces to capture the essence of people and things for who and what they are. They seek truth through observation. Kereama paints expressively, while Pryor shoots on film. Their subjects are friends, whanau, and lands around them — essential elements of their practices. Together, their work offers a mix of humour and poignant observation of those closest to them.

GALLERY 1

20 JUN - 18 JUL

OPENING EVENT

WED 19 JUN, 5PM



LEVI KEREAMA & FELIX PRYOR, 2024

4X2

VICTORIA CARRAN

4x2 showcases 'paintings' framed with notched 4x2 timber, bound with muka. The exhibition reflects on the Māori and colonial history of Art and Architecture in Aotearoa. Each work reframes and reclaims traditional Māori building methods historically overlooked or discouraged by mainstream industry. The strength and interconnectedness of Mātauranga Māori is honoured by reforming connections between Māori art and architecture, transcending and questioning Western disciplinary boundaries.

GALLERY 2

20 JUN - 18 JUL

OPENING EVENT

WED 19 JUN, 5PM



VICTORIA CARRAN, 2024

SOFT SPACES

NGAHINA BELTON- BODSWORTH

Tenderness, safety, and joy are embraced as an act of rebellion in this intimate exhibition, Soft Spaces. Drawing from her own experiences, Belton-Bodsworth responds to feelings of uncertainty and alienation, often felt by indigenous people within their own homeland. Her paintings are a colourful blend of figurative representation and abstract energy. They celebrate moments of bliss without dismissing the realities of hardship. These pieces encapsulate memories, revealing a vulnerable resilience and creating a joyful space of respite. This change from past themes of healing marks a shift in her artistic journey.

GALLERY 3
20 JUN - 18 JUL

OPENING EVENT
WED 19 JUN, 5PM



NGAHINA BELTON-BODSWORTH, 2024

TE WĀ - A MOMENT IN TIME

NGĀ RANGATAHI TOA

Te Wā is an immersive exhibition honouring Puanga and Matariki, inviting manuhiri to pause, reflect, and connect with the essence of space in time. Through interactive installations, rangatahi explore dimensions of their tapa whā – physical, mental resilience, community connections, and spiritual rituals. Thus, nurturing ancestral wisdom, identity, and collective healing during this significant phase of the Māori lunar calendar.

GALLERY 4 & SIDEWALK GALLERY
20 JUN - 18 JUL

OPENING EVENT
THU 20 JUN, 6PM



NGĀ RANGATAHI TOA, 2024

MAKE



ADULTS



YOKO ONISHI

MICRO MACRAME JEWELLERY

Join Yoko to discover the unique craft of *Micro Macrame* (knotting techniques) to create your own jewellery. Yoko will show you step by step on how to make simple bracelets to making complex crystal pendant. This course will introduce all basic techniques so that you will be able to start your own journey (practice) to design and create your Micro Macrame Jewellery.

WHEN WED
6 - 9PM
STARTS 1 MAY
LENGTH 6 WEEKS
COST \$330
CLASS 6 MAX

ALL MATERIALS AND TOOLS WILL BE PROVIDED, HOWEVER PEOPLE ARE MORE THAN WELCOME TO BRING THEIR OWN MATERIALS LIKE STONES AND BEADS
ENROL STUDIOONE.ORG.NZ



TAGATA ATAMAI

CREATIVE WRITING WITH TAGATA ATAMAI

This is a creative writing course that is designed for adults who would like to enhance their writing skills alongside other Pasifika and Māori creatives. During two substantial workshops, learners will talanoa, play and engage in a range of guided writing activities. Supported by Samoan writer, poet and journalist Danielle Kionasina, learners will be provided with a culturally nourishing space to explore while building on their existing knowledge. With their unique identities, languages and cultures as rich foundations for writing, learners will be invited to co-create meaning within a diverse community of storytellers.

WHEN SAT 18 MAY & SAT 15 JUN
9.30AM - 12.30PM
COST \$360
CLASS 15 MAX

ADDITIONAL MATERIALS LIST WILL BE PROVIDED ON ENROLMENT.
ENROL STUDIOONE.ORG.NZ



ADULT 012

VAL ONG

— THROW & PINCH —

Join us for a relaxing six-week evening ceramics course with Val. Through demonstrations and hands on learning you'll explore a mixture of hand building and wheel throwing techniques. You'll have fun understanding and experimenting with clay and all the possibilities that come with it! Works will be fired, and ready for pick up at a later date.

WHEN MON
6 - 9PM
STARTS 29 APR
COST \$395
LENGTH 6 WEEKS
CLASS 9 MAX
INCLUDES UP TO 10KG CLAY,
GLAZES AND FIRINGS
ENROL STUDIOONE.ORG.NZ



ADULT 022

VAL ONG

— THROW IT DOWN 2.0 —

This exciting course is for students who want to hone in more of their throwing skills on the wheel, exploring how to throw bigger and lighter. There will be a focus on how to create light weight wares and different shapes. Works will be fired, ready at a later pick up date. Students are required to have completed a *Throw it Down* course previously. Enrolments are at tutors discretion.

WHEN TUE
6 - 9PM
STARTS 30 APR
COST \$395
LENGTH 6 WEEKS
CLASS 9 MAX
INCLUDES UP TO 10KG CLAY,
GLAZES AND FIRINGS
ENROL STUDIOONE.ORG.NZ



ADULT 032

VAL ONG

—
THROW IT DOWN
—

An intensive six-week ceramics course for those wanting to learn the basics of contemporary clay making on the wheel. This introductory course is ideal for students wanting to learn how to throw a variety of domestic shapes including cups, bowls and cylinders. Works will be fired, and ready for pick up at a later date.

WHEN WED
6 - 9PM
STARTS 1 MAY
COST \$395
LENGTH 6 WEEKS
CLASS 9 MAX

INCLUDES UP TO 10KG CLAY,
GLAZES AND FIRINGS
ENROL STUDIOONE.ORG.NZ



ADULT 042

VAL ONG

—
WEEKEND CLAY WORKSHOP
—

This weekend workshop is a jam packed course exploring both the basics of hand building and wheel throwing. This course is designed for beginners who don't have a lot of free time and want to develop the foundational skills in clay making in a fast paced structured course. The first day will cover wheel throwing and the second day will cover the basics of hand building and how to trim the pieces from the previous day. Val will be able to assist if you have a personal project you would like to do separately. All works will be glazed and fired for you, and ready for pick up at a later date.

WHEN SAT 8 & SUN 9 JUN
10AM - 3PM
COST \$295
CLASS 9 MAX

INCLUDES UP TO 10KG CLAY,
GLAZES AND FIRINGS
ENROL STUDIOONE.ORG.NZ



VAL ONG

—
DROP-IN CERAMICS STUDIO
—

Need some time to work on a project? Want some technical advice on your process? On Fridays you can now work independently in our fully equipped ceramics studio. This weekly drop-in session is ideal for practitioners requiring studio space to work on their own projects or practice. Our technician, Val Ong will be available to provide basic technical advice.

WHEN FRI 12 - 6PM

STARTS 19 APR - 5 JUL

COST \$5 PER PERSON, PER HOUR

BRING YOUR OWN TOOLS, MATERIALS AND PROJECTS TO WORK ON

PUBLIC BISQUE FIRING:

FRI 5 JUL

PUBLIC GLAZE FIRING:

FRI 12 JUL



VARIOUS TUTORS

—
SPECIALIST DROP-INS
—

Introducing a new series of ceramic workshops from professional potters. We will host special demonstrations by different ceramic artists each term. These workshops offer a unique glimpse into their creative processes, allowing attendees to ask questions and engage in hands-on experiences. These sessions are aimed at those with ceramics experience who are looking to learn new techniques. Stay updated on upcoming workshops by following Studio One Toi Tū

BUILDING FORMS WITH BITUMINOUS PAPER WITH SIRIPORN FALCON GREY

WHEN FRI 26 APR

1 - 3PM

WHEEL ENSEMBLE DEMONSTRATION WITH IZA LOZANO

WHEN FRI 24 MAY

1 - 3PM

COST \$10

CLASS 8 MAX

CLAY & TOOLS INCLUDED. FIRING CAN BE DONE AT AN ADDITIONAL COST

ENROL STUDIOONE.ORG.NZ

ADULT 062

HUMPHREY TAIT

SUNDAY WHEEL SESSIONS

This starter course will give you the skills to begin your journey on the potter's wheel. Join Humphrey to learn about clay, how to throw bowls and cylinders on the wheel, and how to trim, decorate and glaze your work.

WHEN SUN
 1 - 4PM
STARTS 14 APR
COST \$395
LENGTH 6 WEEKS
CLASS 8 MAX
TOOLS, MATERIALS & FIRINGS INCLUDED
ENROL STUDIOONE.ORG.NZ

SIRIPORN FALCON-GREY

NOBLE CREATURE

This workshop will teach you how to make a sculpture using the slab building and pinch pot techniques. Finish off your one of a kind piece by creating your own individual markings and textures. Your noble creature will be bisque and glaze fired and ready for pick up at a later date.

WHEN FRI 3 MAY
 10 - 11.45AM
COST \$75
CLASS 12 MAX
MATERIALS INCLUDED
ENROL FALCONGREYCERAMICS.COM



SIRIPORN FALCON-GREY

MAJESTIC MUG

This workshop will teach you how to make a mug using the slab building technique. Have fun adding your own individual markings and textures to make your mug magnificent. Your mug will be bisque and glaze fired and ready for pick up at a later date.

WHEN FRI 17 MAY
10 - 11.45AM

COST \$75

CLASS 12 MAX

MATERIALS INCLUDED

ENROL FALCONGREYCERAMICS.COM



SIRIPORN FALCON-GREY

AUTUMN TEA LIGHT HOLDER

A relaxing workshop to learn how to create your own tea light holder for those moody winter nights. Using the slab building technique, experiment with textures and finishes to make your own custom design. Your tea light holder will be bisque and glaze fired and ready for pick up at a later date.

WHEN FRI 31 MAY
10 - 11.45AM

COST \$75

CLASS 12 MAX

MATERIALS INCLUDED

ENROL FALCONGREYCERAMICS.COM



SIRIPORN FALCON-GREY

BOWL FOR THE SOUL

This workshop will teach you how to make a bowl by using the pinch pot technique. Finish off your one of a kind piece by creating your own individual markings and textures by carving into the clay. Your bowl will be bisque and glaze fired and ready for pick up at a later date.

WHEN FRI 14 JUN
10 - 11.45AM

COST \$75

CLASS 12 MAX

MATERIALS INCLUDED

ENROL FALCONGREYCERAMICS.COM

SIRIPORN FALCON-GREY

MATARIKI CUP

Create a cup to celebrate Matariki in this workshop! Using the slab building technique, finish off your one of a kind piece by creating your own individual markings and textures. Your cup will be bisque and glaze fired and ready for pick up at a later date.

WHEN FRI 28 JUN
10 - 11.45AM

COST \$75

CLASS 12 MAX

MATERIALS INCLUDED

ENROL FALCONGREYCERAMICS.COM



ADULT 072

BETH SERJEANT

DROP-IN PRINT STUDIO

Come along and work independently in our printmaking studio. Studio One Toi Tū has three print presses available, including a large-scale printing press, and we want our community to utilise them.

Bring your own projects and work alongside like-minded creatives. Our longstanding printmaking tutor, Beth Serjeant will be able to provide technical advice and some limited materials will be available.

WHEN TUE, 10AM - 2PM
30 APR - 2 JUL
COST \$5 PER HOUR

BRING YOUR OWN TOOLS, MATERIALS, AND PROJECTS TO WORK ON
ENROL STUDIOONE.ORG.NZ



ADULT 082

ALVIN XIONG

REALISTIC DRAWING & PORTRAIT OIL PAINTING CLASS

Unleash your artistic potential as we delve into traditional drawing techniques. From outlines and shading to texture and perspective, we'll capture the likeness of reference photographs. Join us to refine your skills, unlock new horizons, and create stunning artworks that leave a lasting impression.

WHEN THU
12.30 - 3PM

STARTS 2 MAY
LENGTH 7 WEEKS
COST \$350
CLASS 10 MAX

ADDITIONAL MATERIALS LIST WILL BE PROVIDED ON ENROLMENT.

ENROL STUDIOONE.ORG.NZ
*PLEASE NOTE THERE IS NO CLASS ON 30 MAY



MARK WHIPPY

—
PORTRAIT DRAWING 101
—

This course will introduce you to the head drawing methods taught by masters Frank Riley, Andrew Loomis and John Asaro. Through this you will learn how to see the head in shapes and planes for doing portrait paintings and drawings and learn how to accurately see proportions, where to place the features on a face. By the end you will be able to capture portraits with confidence, speed and efficiency. In the long term, using the charcoal pencil as a brush will also teach you how to paint when you move on to other mediums.

WHEN TUE
6.30 - 8PM
STARTS 30 APR
LENGTH 8 WEEKS
COST \$260
CLASS 10 MAX

ADDITIONAL MATERIALS LIST WILL BE PROVIDED ON ENROLMENT

ENROL STUDIOONE.ORG.NZ



MARK WHIPPY

—
LIFE DRAWING 101
—

This course will be an introduction into figure drawing where we will learn how to construct more realistic figures by learning about gesture, structure, and proportion. We will learn how to convey a sense of gesture to give flow and life to the figure and structure to give a sense of 3D form. We will also learn about how to construct a figure in proportion by finding key landmarks on the figure helping us to map the figure out.

WHEN WED
6.30 - 8PM
STARTS 1 MAY
LENGTH 8 WEEKS
COST \$260
CLASS 10 MAX
ADDITIONAL MATERIALS LIST WILL BE PROVIDED ON ENROLMENT
ENROL STUDIOONE.ORG.NZ



HAN NAE KIM

—
**KINTSUGI: THE ART
BROKEN PIECES**

—
Do you have damaged pieces of art made with wood, metal or ceramics? Embrace the markings of broken objects and transform them with lacquer and varnish decorated with gold and silver leaf. Lacquer is one of the oldest natural materials used in East Asian countries to repair damaged objects. Amend and adorn your fractured pieces and realise their newly restored glory.

WHEN SAT 8 JUN
3 - 5PM

LENGTH 2 WEEKS

COST \$195

CLASS 10 MAX

BRING YOUR OWN DAMAGED OBJECTS,
OTHER MATERIALS INCLUDED

ENROL [HNAEKIM@GMAIL.COM](mailto:hnaekim@gmail.com)

HAN NAE KIM

—
A-Z OF CHARCOAL DRAWING

—
An intensive workshop designed for art enthusiasts of all ages and experience levels. Using charcoal, you will experiment with a range of drawing processes to explore this medium's limitless possibilities. You will then learn how to introduce other media to the charcoal through a series of exercises. Come along and discover the beauty of charcoal!

WHEN SAT 25 MAY
10AM - 2PM

COST \$115

CLASS 10 MAX

MATERIALS INCLUDED

ENROL [HNAEKIM@GMAIL.COM](mailto:hnaekim@gmail.com)



KIDS, TEENS, & SCHOOL HOLIDAYS



VAL ONG

BUNNY SURPRISE

Easter has rolled around again, so it's time for us to make secret bunny sculptures! This can be in any shape or size. The secret is that we will be able to open our bunnies and store our easter eggs inside. The kids will go through all the basics of clay making, and the works will be glazed and collected at a later date.

AGE 5 - 11
 WHEN TUE 16 & WED 17 APR
 10AM - 2PM
 COST \$185
 CLASS 12 MAX
 ENROL STUDIOONE.ORG.NZ



VAL ONG

MAD HATTER TEA PARTY

Hop into this tea party where we will be making quirky tea pot sets inspired by the Mad Hatter. Does it need to be functional? No! Can the lid be enormous? Absolutely! Let's make some amazing outlandish tea pots together. The kids will be taught the basics of hand building, and the works will be glazed and collected at a later date.

AGE 5 - 11
 WHEN TUE 23 & WED 24 APR
 10AM - 2PM
 COST \$185
 CLASS 12 MAX
 ENROL STUDIOONE.ORG.NZ



VAL ONG

FUTURE POTTERS CLUB

Unleash your child's creativity and let them explore the wonders of clay! With our pottery classes, your child will learn how to make their own funky creatures and animal cups. Our classes are designed to help them discover the power of their imagination, while also giving them the opportunity to build beautiful one-of-a-kind pottery that will bring joy. Join us today for an unforgettable experience!

AGE 6 - 12
 WHEN TUE, 4 - 5.30PM
 STARTS 30 APR
 LENGTH 6 WEEKS
 COST \$185
 CLASS 12 MAX
 ENROL STUDIOONE.ORG.NZ



TANJA NOLA

TEEN ART

In a fully equipped art studio, students work progressively to develop their own visual language while learning drawing, painting, printmaking, ceramics and 3D construction skills. Experienced artist and tutor, Tanja, supports students and encourages research and exploration into art history, music, and popular culture. Directed by individual needs, students discover their creative potential and build confidence in their art practice. This course is ideal for teens at all skill levels and is a great bridge for those considering further education in the arts.

AGE 13 - 17
 WHEN THU, 4 - 6PM
 STARTS 9 MAY
 LENGTH 7 WEEKS
 COST \$395
 CLASS 8 MAX
 MATERIALS INCLUDED
 ENROL STUDIOONE.ORG.NZ

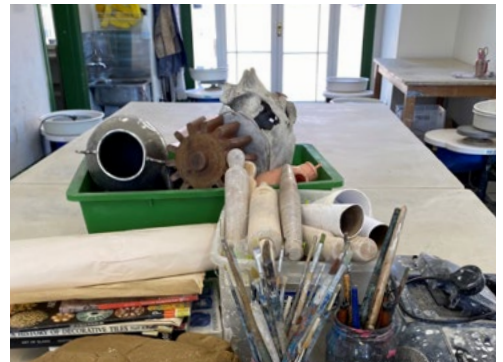


TANJA NOLA

CASUAL DROP-IN
ART SESSION

The Casual Drop-In Art Making Group invites school leavers 16+ to immerse themselves in a relaxed and friendly environment that includes on-site galleries, studios, art classes and communal outdoor space. Whether you join us for an hour or stay for four – it's all about what suits you best. In the dedicated sculpture and making studio there will be an opportunity to explore your own interests with clay sculpting, drawing or painting or whatever might be your thing. Experienced artist, and tutor Tanja Nola will be available to guide your ideas providing insights and techniques to help you. No need to book, just drop in and enjoy some art making time with others.

AGE 16+
 WHEN THU, 18 JUL
 2 - 6PM
 COST FREE
 ENROL STUDIOONE.ORG.NZ



VAL O N G

STUDIO GHIBLI

Get ready to dive into the enchanting world of Studio Ghibli's unforgettable film characters! From the whimsical Catbus in My Neighbor Totoro to the captivating Howl from Howl's Moving Castle, we'll be exploring them all. Join us for an adventure in clay making, bringing these characters to life. Once finished, your creations will be glazed, fired, and available for collection later on. Let's embark on this magical journey together!

AGE 5 - 11
 WHEN WED 10 & THU 11 JUL
 10AM - 2PM
 COST \$185
 CLASS 12 MAX
 ENROL STUDIOONE.ORG.NZ



VAL O N G

GARDEN GNOME PARTY

Welcome to the world of garden gnomes, where each one is unique and full of personality! Design your very own gnome creation. Do you want it to wear a pointy red hat? And how about its expression – happy, mad, or maybe a little sad? Your creation will be glazed, fired, and ready for you to collect later on. Let your imagination run wild in your gnome-making adventure!

AGE 5 - 11
 WHEN TUE 16 & WED 17 JUL
 10AM - 2PM
 COST \$185
 CLASS 12 MAX
 ENROL STUDIOONE.ORG.NZ



Creative Matters holiday art workshops are educational with a focus on a rich development of the creative process, encouraging individual creativity and artistic interpretation as well as time to explore and experiment with ideas and visual arts techniques. We believe in the benefits of vertical age grouping and cater for the individual needs and developmental stages of each child. Keep an eye on www.creativematters.co.nz to see dates and themes.

APRIL SCHOOL HOLIDAY SESSIONS
 MON 15, THU 18, FRI 19
 MON 22, WED 24, FRI 26

JULY SCHOOL HOLIDAY SESSIONS
 MON 8, WED 10, THU 11
 MON 15, WED 17, THU 18
 CREATIVEMATTERS.CO.NZ



HI RE



VENUE HIRE

We offer a range of room hire options available at an hourly rate. Come in to view and discuss how we can assist you to find a space that suits your needs, we are always happy to show you around. To book a space please visit booking.aucklandcouncil.govt.nz/facilities.

MEETING AND EVENT SPACE

Studio One Toi Tū has a variety of adaptable indoor and outdoor spaces to meet your needs, bring your idea to life and open your event to the community. Whether you're a designer looking for a space to show your latest collection, a book group seeking a central meeting place, or if you are looking for something more exciting we have the space for you. To find out how we can support you, visit or call us on 09 376 3221.

HIRE RATES

We have a range of room hire options available at an hourly rate*. Come in to view and discuss how we can assist you to find a space that suits your needs, we are always happy to show you around.

* A community rates discount is available by application

SPACES FOR HIRE

ROOM 5

—
A versatile meeting, workshop and function room with heating and air conditioning.

ROOM 6

—
A sunny versatile meeting, workshop and function room with views onto the rear deck.

ROOM 10

—
A large clean studio with options. It can be hired as a shared studio with up to 12 desks, a rehearsal room, for conferences, seminars, workshops, pop-up exhibitions, film screenings, book launches and more. This space can be booked hourly or weekly with possibilities to hire additional rooms as break-out space.

ROOM 11

—
Our dedicated art workshop with print press, tables, stools, chairs, easels and spot lights. This space is set up to accommodate painting and visual art practices and can be hired in its entirety at our hourly, daily or half daily rate.

ROOM 12

—
Dedicated art workshop set up to accommodate sculpture practices. This workshop can be hired in its entirety at an hourly, daily or half daily rate.



STUDIO ONE — TOITŪ

OPENING HOURS

—

All spaces

Mon - Fri	10am - 6pm
Sat	10am - 4pm
Sun	Closed

—

Residents

24/7 access

ACCESS

—

All rooms and galleries are wheelchair accessible.

LOCATION

—

1 Ponsonby Road,
Auckland, New Zealand

CONTACT

—

09 376 3221
info@studioone.org.nz
studioone.org.nz

facebook.com/studioonetoitu
instagram.com/StudioOne.ToiTu

#VisitCreateMake
#HirePlayShow
#StudioOneToiTu