

STUDIO
ONE
—
TOI TŪ

WHAT'S ON
—
MAY - JUL 2022

PROGRAMME

2



KIA ORA AND WELCOME
TO STUDIO ONE TOI TŪ.

OUR UNIQUE LINE UP OF FUN
AND FREE CREATIVE EVENTS
THIS AUTUMN INCLUDE
EXHIBITIONS, TALKS,
WORKSHOPS, AND COURSES.

JOIN US THIS AUTUMN AND
VISIT, CREATE, MAKE
AT STUDIO ONE TOI TŪ.

FIND OUT MORE

The creative precinct at Studio One Toi Tū is a hub for making. At the intersection of arts and community, it is a place to meet, exchange, grow, learn and join a neighbourhood of creative activity at 1 Ponsonby Road.

If you would like to receive details of upcoming events and programmes, like our Facebook page, follow us on Instagram, visit our website or email us to subscribe to our newsletter.

09 376 3221
info@studioone.org.nz
studioone.org.nz

facebook.com/studioonetoiu
instagram.com/StudioOne.ToiTu

#VisitCreateMake
#HirePlayShow
#StudioOneToiTu

LOCATION

—
1 Ponsonby Road
Auckland, New Zealand



CONTENTS

OPEN

P. 8 - 13

SHOW

P. 14 - 23

MAKE

P. 24 - 33

—

ADULTS

DRAWING & PAINTING

P. 24 - 33

PRINTMAKING

P. 27

BOOKMAKING

P. 27

CERAMICS

P. 28 - 31

KINTSUGI

P. 31

WOODBLOCK PRINTING

P. 33

—

KIDS, TEENS & SCHOOL HOLIDAYS

P. 34 - 37

—

HIRE

P. 38 - 39

HIRE, PLAY, SHOW



VISIT, CREATE, MAKE

With opportunities for individuals and community groups through to experienced professionals, we offer a range of studio spaces for hire, offering you a place to workshop an idea, learn a new technique or sharpen your skills.

Become a part of the creative community at Studio One Toi Tū by applying to be a part of our exhibition programme or hiring our spaces for your next event.

STUDIO SPACES

We have a range of studio options and are one of the few precincts in Auckland to offer access to 'messy' workshops suitable for ceramicists, sculptors and object makers. We also offer a number of open studio spaces that can be hired individually or collectively for making, meetings, workshops or temporary events.

We are located in the heart of central Auckland with free wi-fi, kitchen facilities and the possibility for 24-hour access. Contact us to find out how we can support you.

THE CELL BLOCK

The Cell Block studio spaces are private studios available for hire at a rate of \$78 per week. It comes with 24-hour access and is hired on a monthly basis.

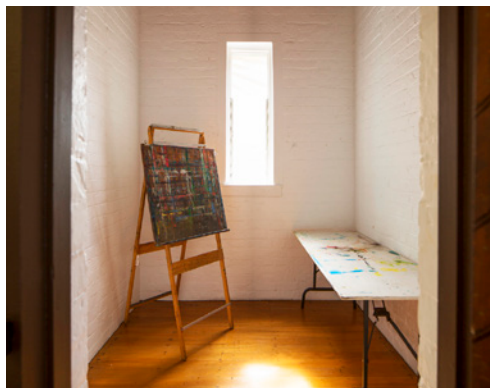
VILLA STUDIO

A shared studio space with access to the sculpture workshop and prep room is available for hire at a rate of \$175 per week. It comes with 24-hour access and is hired on a monthly basis.

WORKSHOP HIRE

Studio One Toi Tū has two 'messy' workshops that can be hired at an hourly rate with access to our ceramic and printmaking equipment. If you have a project and need that extra space to make it happen, this is the option for you.

Contact Studio One Toi Tū to find out more information and check the availability of our studios, gallery and spaces for hire.



CALL FOR EXHIBITION PROPOSALS

—

Studio One Toi Tū welcomes innovative approaches to creative practice and offers opportunities for you to be a part of our diverse exhibition programme. Our four ground floor galleries can accommodate various visual art practices and are available for hire through an annual call for proposals.

CALL FOR TUTORS PROPOSALS

—

Studio One Toi Tū welcomes new and engaging course and workshop proposals from all creative disciplines, ranging from drawing, taxidermy, weaving and printmaking. Courses and workshops can be aimed at adults, youth or proposed as part of our school holiday programme.

Successful tutors are supported through resources available at Studio One Toi Tū, including the use of fit-for-purpose studios and workshop rooms.

CALL FOR RESIDENCY

—

Our Creative Studio Residency programme is open to applicants once a year. We select between two to five projects annually. Successful applicants will be supported by Studio One Toi Tū resources, networks and mentoring. The Residency concludes with an achievable exhibition or event. 2021 Residents included Esther Toclo, Kalee Jackson and Ashleigh Taupaki.

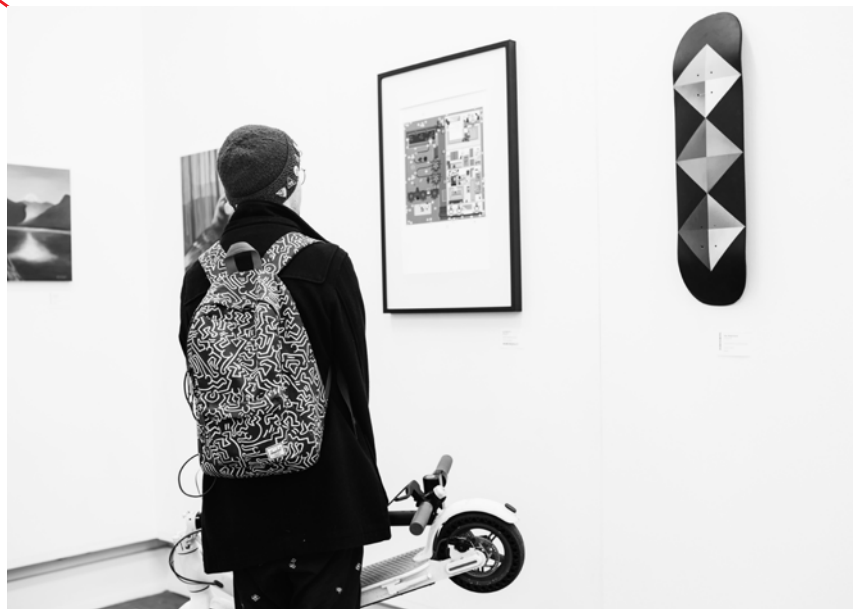


EMMA SAVAGE, 2021

OPEN



CREATIVE TALKS, POP-UPS AND EVENTS



MAKE IT HAPPEN HERE

From creative conversations to pop-up exhibitions, there's always something happening at 1 Ponsonby Road. If you require a studio for a project or workshop, would like to showcase your work or are in need of a venue to host a special event, contact us to discuss the opportunities available for you at Studio One Toi Tū.

CREATIVEMORNINGS AKL

CreativeMornings AKL is a monthly breakfast lecture featuring a guest speaker each month. It is a great way to bring together like-minded individuals who are seeking inspiration and connections within the creative community. It started over a decade ago in NYC and there are now over 200 chapters around the world, making CreativeMornings/Auckland part of a global, creative whānau. At the heart of each chapter is a conversation that speaks to the intersection of creativity and the month's theme. Book your free ticket and join us for a coffee and creative discussion.

BOOK DIRECTLY AT
CREATIVEMORNINGS.COM/CITIES/AKL

ARTISTS ON ARTISTS

EXHIBITION AND ART-MAKING EVENT

A group exhibition where each artist is the subject of another artist's work. Follow the artworks around the exhibition to see how each artist has painted, photographed and created work of another artist. In addition, join us for free a drawing and art making event. In line with the exhibition, easels are placed in a circle and each person draws someone else in the circle. Includes tea and coffee break to meet other attendees, drawing materials and easels provided, but please bring your own specialist materials. All skill levels welcome.

GALLERY RM 10
12 - 21 MAY

OPENING EVENT
THU 12 MAY, 6PM

WORKSHOP
WHEN SAT 14 MAY
10.30AM - 12.30PM

REGISTER AT [EVENTBRITE](https://www.eventbrite.com), LIMITED
SPACES AVAILABLE



QUEER AF

QUEERS & WARES MARKET

Championing the lgbtqia+ talent of Aotearoa the Queers and Wares market will be returning this Autumn 2022. Showcasing a diverse array of stalls, this is an excellent chance to buy locally and sustainably while supporting queer artists.

WHEN SAT 28 MAY
 10AM - 2PM

THE AGENDA ZINE

ISSUE THREE LAUNCH

The Agenda Zine is an Auckland-based queer zine with a goal of amplifying queer voices and art to Aotearoa. Come along to this fun, community-focused, vibrant launch party of Issue three of the Agenda Zine. The event will feature performances from a range of amazing queer musical artists, you can snap up a zine for sale and be in with the chance to win prizes on the night! Join The Agenda Zine for a drink and a nibble and enjoy a spectacular night.

WHEN SAT 4 JUN
 6 - 10PM



BIG FOOT NZ

FOOTWORK

Auckland Council and Bigfoot NZ present *Footwork*, a FREE week long exhibition and one-day sneaker symposium showcasing the hip hop inspired, pro-sports ignited, pop sub-culture, of the sneakerhead. The show will feature a solo photography exhibition by Grantis 13 aka DJ Grantis alongside an exciting display of exclusive models. Join us on 18 June for a chance to connect with others over a sneaker swap meet, DJs, food, live customising and restoration demos and much more.

EXHIBITION

WHEN 18 - 22 JUN
10AM - 6PM

EVENT

WHEN SAT 18 JUN
10AM - 4PM

MATARIKI FESTIVAL

ĀHUA COLLECTIVE

EXHIBITION

Āhua Collective continues to decolonise the future of Aotearoa by sharing the stories of our community and creating safe spaces to evolve and exhibit mahi. This show will centre takataapui artists as we share the mahi toi of our QTBIPOC collective.

GALLERY RM 10
11 - 19 JUL

OPENING EVENT
FRI 15 JUL, 6PM

ADULT 162 & 172

DONNA KERRIDGE

RONGOĀ MĀORI WORKSHOP

Studio One Toi Tū is excited to offer two Rongoā workshops with Donna Kerridge, a registered Medical Herbalist and traditionally trained Rongoā Māori practitioner. In this session you will learn about the philosophy of traditional Māori medicine and how this applies to our care and wellbeing. Learn how to make a balm for the whole whanau using nature's gifts.

WHEN WED 22 JUN
THU 14 JUL
10AM - 1PM

COST \$20
CLASS 9 MAX

MATERIALS INCLUDED
ENROL: [STUDIO ONE.ORG.NZ](https://studioone.org.nz)



AOTEAROA BONE
AND STONE

POUNAMU
WORKSHOP

Join Maha and learn about the practices associated with Māori toi (arts) whilst creating a pounamu Marama Taonga in this all-day workshop. Using, grinders, drills, wet and dry sanding, and polishing tools participants will create their own pendant. You will learn binding and lashing techniques that help will you complete your mini master piece.

WHEN SAT 16 JUL
10AM - 6PM
COST \$60
CLASS 10 MAX
MATERIALS INCLUDED
ENROL: STUDIO ONE.ORG.NZ

RECREATORS

ADULTS
POI CLASS

Learn to make poi with reclaimed t-shirts and wool stuffing off-cuts. T-shirts are upcycled and reused in every step of the process in this workshop, from making the poi's braid and pompom, to wrapping the poi ball. Every scrap of waste made during the poi making process is incorporated back into the poi. This is truly a zero waste class! The end result is a strong poi that will be great to use.

WHEN FRI 15 JUL
6 - 8PM
COST \$10
CLASS 10 MAX
MATERIALS INCLUDED
ENROL:
THERECREATORS.CO.NZ

RECREATORS

HARAKEKE STARS
AND FLOWERS
(WEAVING CLASS)

Woven whetu (stars) and flowers are a fun and creative way to weave with flax and begin to learn the skills and craft of harakeke weaving. It is also a great way to celebrate Matariki, to come together to reflect and to celebrate our community! In Aotearoa, the rising of the Matariki star cluster means that Winter is here and the Māori New Year has begun.

WHEN FRI 8 JUL
4 - 6PM
COST \$10
CLASS 10 MAX
MATERIALS INCLUDED
ENROL:
THERECREATORS.CO.NZ



SHOW

EXHIBITIONS



WAI-O-RONGO

WD POARTRY

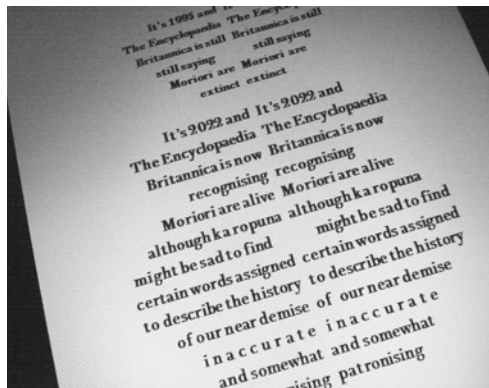
Poetry emerges as text formatted visual art - 'painting with words', in *Wd PoArtry*, a debut exhibition by Moriori elder, Wai-O-Rongo (Denise Davis). The 'Wd' in the title, may be seen as shorthand for 'word processing,' as well as part of her name. All of the works in the exhibition are derived from a 'diversity themed' publication, currently in development by Davis. It will showcase poems in free verse, haiku, rap, rhyming verse, and 'PoArtry.'

GALLERY 1

7 APR - 5 MAY

OPENING EVENT:

WED 6 APR, 5PM



WAI-O-RONGO, 2022

SUR COLLECTIVE

MAGICAL UPROOTING: A DIALOGUE BETWEEN BELIEFS AND BELONGINGS

Magical Uprooting brings together a range of creative practices by the Latin American artists of Sur-Collective, cultivating safe spaces through workshops, teaching, and learning from one another. In this exhibition you are invited to have a contemplative experience and participate in a ritual by 'making offerings' at an altar - a place to worship, acknowledge or call forth. Through this process visitors are part of building a social space of both physical interaction and sensory experience.

"Magical Uprooting is part of a process, our process, the first step towards unknown places" - Sur-Collective

GALLERY 2

7 APR - 5 MAY

OPENING EVENT:

WED 6 APR, 5PM



SUR COLLECTIVE, 2022

LINDA VA'AE LUA

FROM TARTAN TO TATAU

Artist Linda Va'aelua delves into the ancient significance of the traditional designs from both her Sāmoan and Scottish heritage. Va'aelua explores her identity through visual pattern, combining imagery from both cultures. Photographing the traditional Sāmoan malu (female tattoo) adorning her legs alongside the Livingston Scottish family tartan, both treasures hold great pride, beauty and meaning for Va'aelua and her family. She studies the uses of these traditional forms today, questioning the value that is placed on cultural pattern and contextually, how people view tartan and tatau.

GALLERY 3

7 APR - 5 MAY

OPENING EVENT:

WED 6 APR, 5PM



QIANE MATATA-SIPU, 2022

JUDITH MILNER

RAISING THE BAR

Raising the Bar features the portraits of 16 inspirational New Zealand women, from diverse backgrounds, working in the field of law. The images of these prominent trailblazers are executed in oils by artist Judith Milner. Milner uses portraiture to celebrate their achievements and inspire future generations of young women. Milner sees her work as contributing to the changing face of a profession struggling with inequality and which has been rocked by cases of sexual harassment and bullying. By depicting strong women who are challenging the status quo, these works provide a counterpoint to both the submissive presentation of women in art history and the male portraits that have traditionally adorned our courtrooms and boardrooms.

GALLERY 4

7 APR - 5 MAY

OPENING EVENT:

WED 6 APR, 5PM



JUDITH MILNER, 2022

ANA TRAVAGLIO

TIC-TAC

TIC-TAC Artist Ana Travaglio uses pop art as a reference for her work. Her interest in illustrating the failures of the system are prominent themes in her art practice. Through her use of embroidery, the meaning of the fabric is transfigured, revealing a conflict that results from personal as well as societal value changes.

Travaglio's techniques are manual, meticulous and slow, she aims to capture time and immortalize it. Through her use of colour and detail the works reveal the essence of the human spirit and suggest a vibrant future full of possibilities.

SIDEWALK GALLERY

7 APR - 5 MAY

OPENING EVENT:

WED 6 APR, 5PM



ANA TRAVAGLIO, 2022

KATE RAMPLING

UNHEIMLICH

Primarily interested in shining a spotlight on everyday moments, that through her lens crossover from the mundane to the mythic. Rampling presents *Unheimlich*, medium format photography with automatic techniques (commonly used by the Surrealists) upon the photo negative surface.

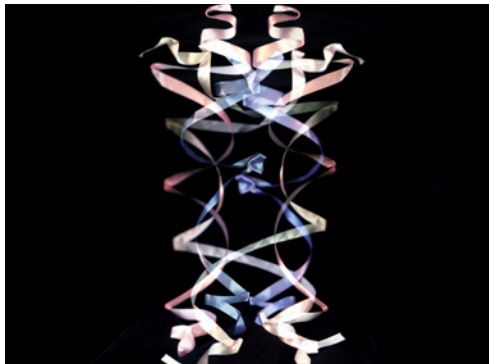
Unheimlich (unhomely) or the uncanny, refers to a strange or anxious feeling caused by familiar objects viewed out of context. Rampling's ethereal photographic work explores constructed realities, picking up on everyday moments that hint at larger narratives.

GALLERY 1

12 MAY - 9 JUN

OPENING EVENT:

WED 11 MAY, 5PM



KATE RAMPLING, 2022

LOGAN MOFFAT

—
THROUGH THE MIST
—

Returning to the studio during a period of uncertainty artist Logan Moffat uses his personal experience from 2021 onwards, a time of frustration, confusion, and detachment, as a starting point for his paintings. In *Through the Mist* Moffat visualises memories that reflect moments of peace to temporarily escape the chaos of everyday life. Images of landscapes populated by wandering faceless figures, an AI-generated portrait and imagery of the sunset feature strongly in his work. These paintings offer an open-ended moment for viewers to experience the artworks, invent their own meanings and pause for a moment to reflect.

GALLERY 2

12 MAY - 9 JUN

OPENING EVENT:

WED 11 MAY, 5PM

CÉLINE SAYÉ

—
L'INTERFACE
—

For *L'interface* artist Céline Sayé responds to her feelings of displacement and uncertainty. Since the loss of her father in 2015 she felt the tension between her desire to both stay in Aotearoa and to be back in France to be closer to her mother. This distance was reinforced by Covid-19 and the international travel restrictions. Through a series of digitally collaged photographs Sayé explores these conflicted longings, by bringing together two places, constructing an intersection of two seascapes: the West coast of Auckland and the coastline of Guidel, her home village in Brittany, France.

GALLERY 3

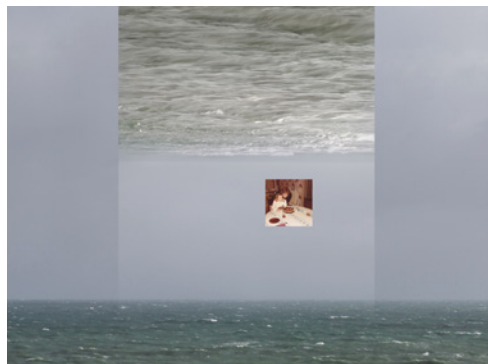
12 MAY - 9 JUN

OPENING EVENT:

WED 11 MAY, 5PM



LOGAN MOFFAT, 2022



CÉLINE SAYÉ, 2022

BILL RILEY

SHIFT

Shift is an exhibition about change. Using painting and photography Riley documents his journey through illness and recovery by recording his surroundings. His visual observations of hospital architecture, the view from his bed and imagery from his walks taking in the Waitematā harbour foregrounds the connections we have between internal and external, public and private. The works can be simultaneously read as autobiographical or as a public statement. Riley asks us to examine our relationship with concepts of the wider world such as time, climate change and our response to the pandemic.

GALLERY 4

12 MAY - 9 JUN

OPENING EVENT:

WED 11 MAY, 5PM



BILL RILEY, 2022

BONCO

STEP

Bonco explores themes of transcending material to reach a spiritual consciousness in his paintings. *Step* is inspired by the description of Jacobs's ladder as it appears in Genesis 28:10, it can be seen as a visual sign of the connection between earth and heaven, humanity and God. Bonco employs simple painted geometric "tricks" to suggest movement, stepping up, down, in, out, falling, flying or even tripping. The project *Step* offers us the challenge of considering one's perspective of ourselves in the world and is intended as a metaphor to represent a break or deviation from society's normative structure.

GALLERY 4

12 MAY - 9 JUN

OPENING EVENT:

WED 11 MAY, 5PM



BONCO, 2022

HENDERSON INTERMEDIATE SCHOOL

TUPU MA OLA

Tupu Ma Ola takes its name from the school motto of Henderson Intermediate, to “Flourish and Grow.” Students have spent countless hours braiding, weaving and stitching together this visual display of alofa (love). The exhibition invites you to immerse yourself in a sea of colour, amongst hundreds of ‘ula lei handmade by students from Henderson Intermediate School. The ‘ula is symbolic of love, friendship, celebration and honour. Also featured, are a collection of gold carvings celebrating, honouring, and paying homage to students’ culture and identity.

GALLERY 1 & 2
16 JUN – 14 JUL

OPENING EVENT:
WED 15 JUN, 5PM

NGĀ RANGATAHI TOA

TE HĪHIRI - THE SPARK THAT IGNITES CHANGE

Ngā Rangatahi Toa celebrates the Matariki season by showcasing the work of rangatahi (youth). Over the past two years the students have conceptualised, created and composed music for their healing journey through the music of taonga pūoro (musical instruments) fused with modern day waiata. “Our Tupuna used these instruments in days gone by as tools to heal and promote a healthy tinana (body), hinengaro (mind) and wairua (spirit). Taonga pūoro holds the vibration of the natural world and when played, this vibration resonates within us and helps us to reconnect to the intelligence and power of nature.”

GALLERY 3
16 JUN – 14 JUL

OPENING EVENT:
WED 15 JUN, 5PM



HENDERSON INTERMEDIATE SCHOOL, 2022



EMILY RAFERTY, 2022

NIKKI DIXON, LIAM
O'HALLORAN,
RAYMOND STEWART

—
VIVID PORTRAYAL
—

Toi Ora Live Art Trust presents *Vivid Portrayal* an exhibition by three artists working in a range of mediums, mosaics, mixed media and watercolours. The exhibition showcases the style and imagery of their diverse art practices. Subjects explored by the artists span across themes from the piercing gaze of a bird and portraiture to people in their everyday environments.

GALLERY 4
16 JUNE – 14 JUL

OPENING EVENT:
WED 15 JUN, 5PM



TOI ORA, 2022

CURATED BY
PHILIP TSE

—
**I'VE MADE
UP MY MIND**
—

I'VE MADE UP MY MIND is an exhibition showcasing a group of thirteen artists from a range of backgrounds. Through painting, photography, sculpture, music and poetry, viewers can experience different approaches and techniques in contemporary artmaking. Featuring Diane Scott, Fiona Newton, Haihui Wang, Kingsley Melhuish, Kim Meredith, Lalita li Abraham, Lea-Anne Sheather, Lulu Fang, Nim Flora Chan Statham, Ong Onlie, Philip Tse, Giuwang Wang, Selwyn Vercoe.

GALLERY 1 & 2
28 JUL – 25 AUG

OPENING EVENT:
WED 27 JUL, 5PM



HAUHUI WANG, 2022

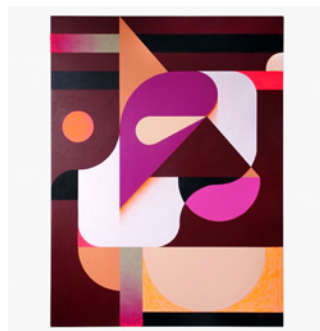
PAUL DARRAGH

—
IRL
—

Artist Paul Darragh explores compositions in geometric abstraction in these paintings. The works represent the interweaving of our digital and physical lives using forms that allude to an energy that is simultaneously mechanical, sexual and organic. Graphic compositions convey a sense of motion through a dynamic interchange of shape and colour. At the core of these paintings are elements of logotypes and corporate branding, a language that is so ubiquitous to our daily digital lives that it brings a comforting familiarity.

GALLERY 3
28 JUL – 25 AUG

OPENING EVENT:
WED 27 JUL, 5PM



PAUL DARRAGH, 2022

GLEN ARMSTRONG

—
**A SMALL CONVERSATION
WITH MYSELF ABOUT CARPET**
—

Glen Armstrong takes a piece of Axminster Summer Bouquet carpet with its distinctive symmetrical floral patterning as a reference point for this body of work. Armstrong sees the carpet as a metaphor for the prominence of pattern and repetition in the things and actions that make up our daily lives. During Covid-19 lockdown August 2021 in Auckland the daily patterns and his movement around the house inspired an intense and ongoing period of introspective mark making, embroidery and exploration. The exhibition reveals some of this conversation.

GALLERY 4
28 JUL – 25 AUG

OPENING EVENT:
WED 27 JUL, 5PM

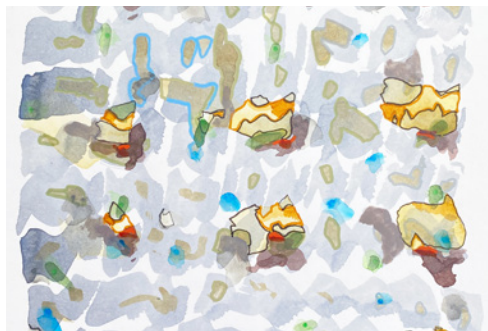
HARINDER RAJPAL

—
I KNEW I HAD TO MOVE ON
—

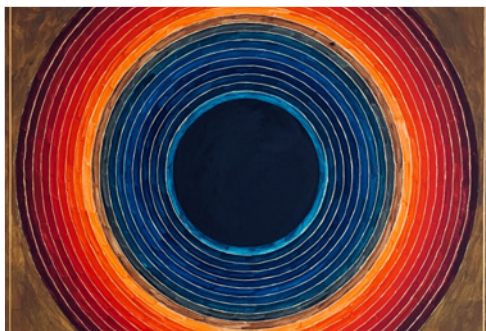
Artist Harinder Rajpal paints strong geometrical compositions and balanced colour fields. Working intuitively, he paints in layers onto glass until a balanced equilibrium is achieved. Glass is an important medium for his work, for him it represents the exquisiteness of the human brain. Inspired by SH Raza and Mark Rothko his geometric style of abstraction in vibrant colours makes an impact on those who pass by the Sidewalk Gallery window.

SIDEWALK GALLERY
28 JUL – 25 AUG

OPENING EVENT:
WED 27 JUL, 5PM



GLEN ARMSTRONG, 2021



HARINDER RAJPAL, 2022

MAKE



ALVIN XIONG

REALISTIC DRAWING

Hone your skills in traditional drawing techniques and simplify the challenge of capturing a likeness in this stimulating course. Using reference materials supplied by the tutor and a photo of your choice, you will learn methods for starting a drawing and how to develop your work using shading, outline and texture. The tutor will recommend tips for correcting shape and will help make your drawings look true to life.

WHEN THU
9.30AM - 12PM

STARTS 5 MAY

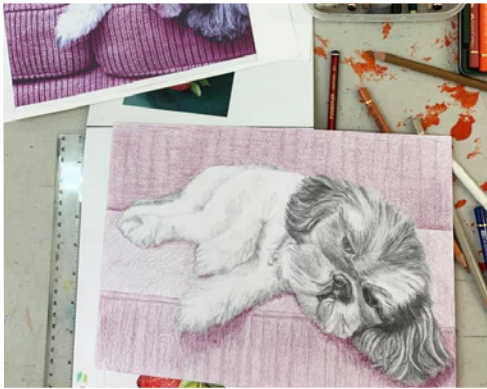
LENGTH 9 WEEKS

COST \$270

CLASS 10 MAX

ADDITIONAL MATERIALS LIST WILL BE PROVIDED ON ENROLMENT

ENROL: STUDIOONE.ORG.NZ



ALVIN XIONG

PORTRAIT PAINTING IN OIL

Explore realistic portrait painting while working from a photo of your choosing. Learn oil painting techniques and how to use various brushes. You will begin with underpainting and then move to developing the structure of the head and facial features. The tutor will help with lighting, shading, and colour choices. All ability levels are welcome, as the class is structured to provide one on one instruction to each student.

WHEN THU
1 - 3.30PM

STARTS 5 MAY

LENGTH 9 WEEKS

COST \$270

CLASS 10 MAX

ADDITIONAL MATERIALS LIST WILL BE PROVIDED ON ENROLMENT

ENROL: STUDIOONE.ORG.NZ



BETH SERJEANT

—
PRINTMAKING DROP-INS

Come along and work independently in our printmaking studio alongside experienced tutor, Beth Serjeant. You can make use of our specialist equipment, including two small and one large-scale printing press that we'd love our community to utilise! Bring your own projects and work alongside like-minded creatives. Beth will be able to provide technical advice and some limited materials will be available.

WHEN TUE
 10AM - 1PM

STARTS 1 FEB

COST \$5 PER HOUR

BRING YOUR OWN TOOLS, MATERIALS,
AND PROJECTS TO WORK ON

BETH SERJEANT

—
THREE SMALL BOOKS

Create a set of three diary-sized, handmade books using a range of quality materials, including leather, wood and handmade paper. In this fun weekend workshop you will also learn a number of book-binding techniques, including Coptic, Long Stitch and Buck Naked.

WHEN SAT & SUN 22 MAY
 10AM - 4PM

COST \$145

CLASS 6 MAX

MATERIALS INCLUDED

ENROL: STUDIOONE.ORG.NZ



ADULT 082 & 092

VAL ONG

THROW IT DOWN

An intensive eight-week ceramics course for those wanting to learn the basics of contemporary clay making on the wheel. This introductory course is ideal for students wanting to learn how to throw a variety of domestic shapes including cups, bowls and cylinders. This relaxed course is suitable for anyone who would like to give ceramics a go and enjoy some good banter!

WHEN TUE
 6 - 8.30PM
STARTS 17 MAY
WHEN WED
 6 - 8.30PM
STARTS 18 MAY
COST \$360
LENGTH 8 WEEKS
CLASS 8 MAX
INCLUDES UP TO 10KG CLAY, GLAZES
AND FIRINGS.

ENROL: STUDIOONE.ORG.NZ



ADULT 102

VAL ONG

THROW & PINCH

Join us for a relaxing eight-week afternoon ceramics course with Val. Through demonstrations and hands on learning you'll explore a mixture of hand building and wheel throwing techniques. You'll have fun understanding and experimenting with clay and all the possibilities that come with it!

WHEN MON
 6 - 8.30PM
STARTS 16 MAY
COST \$360
LENGTH 8 WEEKS
CLASS 8 MAX
INCLUDES UP TO 10KG CLAY, GLAZES
AND FIRINGS.

ENROL: STUDIOONE.ORG.NZ



ADULT 112

VAL ONG

—
WEEKEND CLAY WORKSHOP
—

Let's play with clay and create some fascinating pieces! It's entirely up to you on what you would like to make; domestic wares to endearing sculptures. There will be demonstrations throughout both days on hand building and wheel throwing to spark an idea!

WHEN SAT 25 & SUN 26 JUN
10AM - 3PM

COST \$280

CLASS 9 MAX

INCLUDES UP TO 10KG CLAY, GLAZES
AND FIRINGS.

ENROL: STUDIOONE.ORG.NZ



ADULT 081

VAL ONG

—
DROP-IN CERAMICS STUDIO
—

Need some time to work on a project? Want some technical advice on your process? On Fridays you can now work independently in our fully equipped ceramics studio. This weekly drop-in session is ideal for practitioners requiring studio space to work on their own projects or practice. Our technician, Val Ong will be available to provide basic technical advice.

WHEN FRI 12 - 6PM

STARTS 6 MAY

COST \$5 PER PERSON, PER HOUR

BRING YOUR OWN TOOLS, MATERIALS, AND
PROJECTS TO WORK ON.

PUBLIC BISQUE FIRING:

13 MAY

PUBLIC GLAZE FIRING:

20 MAY



SIRIPORN FALCON-GREY

—

MAKE YOUR OWN MUG

—

This workshop will teach you how to make a mug using the slab building technique. Finish off your one-of-a-kind piece by creating your own individual markings and textures. Your mug will be bisque & glaze fired and ready for pick up at a later date.

WHEN FRI 6 MAY
 10 - 11.45AM
 FRI 17 JUN
 10 - 11.45AM

COST \$65
CLASS 8 MAX
MATERIALS INCLUDED

ENROL: [TINYURL.COM/2P8WAJZP](https://tinyurl.com/2P8WAJZP)



SIRIPORN FALCON-GREY

—

MAKE YOUR OWN BOWL

—

This workshop will teach you how to create a bowl for a salad, cereal, or any of your favourite snacks! We'll be using the pinch pot technique with emphasis on various textures. Your handmade bowl will be bisque & glaze fired and ready for pick up at a later date.

WHEN FRI 20 MAY
 10 - 11.45AM
 FRI 1 JUL
 10 - 11.45AM

COST \$65
CLASS 8 MAX
MATERIALS INCLUDED

ENROL: [TINYURL.COM/2P8WAJZP](https://tinyurl.com/2P8WAJZP)



SIRIPORN FALCON-GREY

MAKE YOUR OWN MINI PLANTER

A relaxing workshop to learn how to create your own funky mini planter! Using the slab building technique and playing with textures, your plants will be happy in their new custom planter handmade by you. Your mini planter will be bisque & glaze fired and ready for pick up at a later date.

WHEN FRI 3 JUN
 10 - 11.45AM

COST \$65

CLASS 8 MAX

MATERIALS INCLUDED

ENROL: [TINYURL.COM/2P8WAJZP](https://tinyurl.com/2P8WAJZP)

HAN NAE KIM

KINTSUGI: THE ART BROKEN PIECES

Do you have damaged pieces of art made with wood, metal or ceramics? Embrace the markings of broken objects and transform them with lacquer and varnish decorated with gold and silver leaf. Lacquer is one of the oldest natural materials used in East Asian countries to repair damaged objects. Amend and adorn your fractured pieces and realise their newly restored glory.

WHEN WED 15 JUN
 7 - 9PM

LENGTH 2 WEEKS

COST \$195

CLASS 10 MAX

BRING YOUR OWN DAMAGED OBJECTS, ALL
OTHER MATERIALS INCLUDED

ENROL: HNAEKIM@GMAIL.COM



HAN NAE KIM

DRAWING ON A LARGE SCALE

Drawing can often be a small, and intimate process. In this class you will embrace drawing on a large scale to push the boundaries. You will be experimenting with different processes to translate your ideas into large works. You will also learn how to prepare your working surfaces including canvas, paper and wood.

WHEN MON
7 - 9PM

STARTS 30 MAY

LENGTH 4 WEEKS

COST \$210

CLASS 10 MAX

ADDITIONAL MATERIALS LIST WILL BE PROVIDED ON ENROLMENT

ENROL: HNAEKIM@GMAIL.COM

HAN NAE KIM

A-Z OF CHARCOAL DRAWING

An intensive workshop designed for art enthusiasts of all ages and experience levels. Using charcoal, you will experiment with a range of drawing processes to explore this medium's limitless possibilities. You will then learn how to introduce other media to the charcoal through a series of exercises. Come along and discover the beauty of charcoal!

WHEN SAT 4 JUN
10AM - 2PM

COST \$115

CLASS 10 MAX

MATERIALS INCLUDED

ENROL: HNAEKIM@GMAIL.COM



ADULT 062

SYBILLE SCHLUMBOM

—
**INTRODUCTION TO
WOODBLOCK PRINTING
(MOKUHANGA)**
—

This class offers an introduction to relief printing with a focus on mokuhanga, water-based woodblock print. Students will carve a small, partly pre-carved plate and print with black ink. This is the opportunity to make a personal card that can be hand coloured after drying. While this class is suitable for absolute beginners, some ideas and sketches you bring along might not be. With an open mind we will find an individual, achievable goal for everyone.

WHEN SAT 7 MAY
 10AM - 5PM
COST \$160
CLASS 10 MAX

ENROL: STUDIOONE.ORG.NZ



ADULT 072

ALICE BERRY

—
CREATE A GEM
—

Join local artist Alice Berry for this one-off painting workshop. You'll have fun while you play with paint to create a wonderful original artwork. In this workshop you'll experiment with colour, texture, and shapes to create your own uncut gem painting ready to be put on your wall. Crystals will be available for inspiration and you'll get to take one home each. We'll be using acrylic paints on canvas. All you need to bring is your imagination and good vibes. This course is suitable for any experience level.

WHEN SAT 14 MAY
 10AM - 2PM
COST \$175
CLASS 8 MAX
MATERIALS INCLUDED

ENROL: STUDIOONE.ORG.NZ



KIDS, TEENS & SCHOOL HOLIDAYS



TANJA NOLA
—
TEEN ARTWORK
—

In a fully equipped art studio, students work progressively to develop their own visual language while learning drawing, painting, printmaking, ceramics and 3D construction skills. Experienced artist and tutor, Tanja, supports students and encourages research and exploration into art history, music, and popular culture. Directed by individual needs, students discover their creative potential and build confidence in their art practice. This course is ideal for teens at all skill levels and is a great bridge for those considering further education in the arts.

AGE 13 - 17
WHEN THU
4 - 6PM
STARTS 19 MAY
LENGTH 7 WEEKS
COST \$270
CLASS 8 MAX
MATERIALS INCLUDED

ENROL: STUDIOONE.ORG.NZ



TANJA NOLA
—
TEEN CERAMICS
—

In a specialized sculpture studio, this workshop will introduce young artists to the inventive possibilities of the ceramic medium. Participants will learn handbuilding techniques, 3D making skills and discover the decorative possibilities of colour, pattern and texture. This workshop will also look at the history of ceramic art and connect these ideas with students' personal interests. Taught in a relaxed environment and guided by experienced tutor and artist Tanja Nola, participants will enjoy sharing their creative experience with like-minded artists.

AGE 16 - 19
WHEN THU
7 - 9PM
STARTS 2 JUN
LENGTH 6 WEEKS
COST \$270
CLASS 8 MAX
MATERIALS INCLUDED

ENROL: STUDIOONE.ORG.NZ



ALICE BERRY

PLAY WITH PAINT

Join in the fun and play with paint to find your unique artistic style. Over six weeks students will learn to express themselves in colour, texture and shapes. Each class will have a different topic that encourages your child to get creative and interpret the theme in their own way. At the end of the course students will have created one or multiple painted masterpieces! This course is taught by local abstract artist and designer, Alice Berry, and is an ideal course for students interested in exploring painting and colour.

AGE 7 - 12
WHEN TUE
4 - 6PM
STARTS 17 MAY
LENGTH 6 WEEKS
COST \$220
CLASS 6 MAX
MATERIALS INCLUDED

ENROL: STUDIOONE.ORG.NZ



VAL ONG

FUTURE POTTERS CLUB

Let's ignite our boundless imaginations on what we can create with our hands! Students will learn some of the basic hand building techniques including hand pinch, slab and coiling to create funky creatures that will be the statement piece of your table or an amazing animal cup that you can actually drink out of!

AGE 6 - 12
WHEN TUE
4PM - 5.30PM
STARTS 31 MAY
LENGTH 6 WEEKS
COST \$185
CLASS 12 MAX
MATERIALS INCLUDED

ENROL: STUDIOONE.ORG.NZ



VAL ONG

FAIRYTALE CREATURES

Let's create some funky creatures out of clay! Students will be taught different hand building techniques to help create their very own characters from a favourite storybook, fairytale or show. They will explore lots of different techniques including pinch pots, slab building and mould making!

AGE 5-10
WHEN TUE 26 & WED 27 APR
10AM - 2PM
WHEN MON 18 & TUE 19 JUL
10AM - 2PM
COST \$185
CLASS 10 MAX
MATERIALS INCLUDED

ENROL: STUDIOONE.ORG.NZ



THE RECREATORS
SEW A KIWI

In this workshop kids will learn how to sew and make a Kiwi toy. This is a mindful activity that also teaches the art of sewing. We use discarded new and reused materials in this project.

The ReCreators will teach the blanket, running and hidden seam stitches as well as how to make templates and finalise your designs. Choose from a diverse range of fabrics and decorations

AGE 7+
WHEN TUE 26 APR
10AM - 2PM
COST \$10
CLASS 10 MAX
MATERIALS INCLUDED

ENROL: THERECREATORS.CO.NZ



THE RECREATORS
ORIGAMI BOATS

Create origami boats with The ReCreators using upcycled paper. This is a mindful and fun activity. Watch out origami can become addictive! In this workshop kids will learn the art of folding paper to create beautiful paper creations.

The ReCreators are on a mission to show the world how to reduce and reuse our natural resources. It's easy, fun, creative, and sustainable. Join us on our journey.

AGE 7+
WHEN WED 27 APR
10AM - 2PM
COST \$10
CLASS 10 MAX
MATERIALS INCLUDED

ENROL: THERECREATORS.CO.NZ



HIRE

VENUE HIRE

MEETING AND EVENT SPACE

Whether you're a designer looking for a space to show your latest collection, an artist looking for an exhibition space or a book club seeking a central meeting place - we have the space for you. To find out how we can support you, visit 1 Ponsonby Road, or call us on 09 376 3221.

HIRE RATES

We have a range of room hire options available at an hourly rate*. To view our rates or to book a room please visit booking.aucklandcouncil.govt.nz/facilities

* A community rates discount is available by application

SPACES FOR HIRE

ROOM 5

A versatile meeting, workshop and function room with heating and air conditioning. Capacity: 50 people.

ROOM 6

A sunny versatile meeting, workshop and function room with views onto the rear deck. Capacity: 25 people.

ROOM 10

A large clean studio space used for conferences, seminars, workshops, pop-up exhibitions, film screenings and more. The space can be booked hourly or weekly. Capacity: 100 people.

ROOM 11

A dedicated art workshop to accommodate visual art practices or creative workshops. Fitted with a printing press, tables, chairs, easles, lighting track and a spotlight. This space can be booked hourly, daily, or half-daily. Capacity: 30 people.

ROOM 12

Dedicated art workshop set up to accommodate sculpture practices. Fitted with pottery wheels. This space can be booked hourly, daily, or half-daily. Capacity: 20 people.

STUDIO ONE — TOI TŪ

OPENING HOURS

All spaces

Mon – Fri	10am – 6pm
Sat	10am – 4pm
Sun	Closed

Residents

24/7 access

ACCESS

All rooms and galleries
are wheelchair accessible.

LOCATION

1 Ponsonby Road
Auckland, New Zealand

CONTACT

09 376 3221
info@studioone.org.nz
studioone.org.nz

facebook.com/studioonetoiu
instagram.com/StudioOne.ToiTu

#VisitCreateMake
#HirePlayShow
#StudioOneToiTu