

STUDIO  
ONE  
—  
TOI TŪ

WHAT'S ON  
—  
JAN - APR 2021

PROGRAMME

1

KIA ORA AND WELCOME  
TO STUDIO ONE TOI TŪ.

OUR UNIQUE LINE UP OF  
FUN AND FREE CREATIVE  
EVENTS THIS SUMMER  
INCLUDE EXHIBITIONS,  
PERFORMANCES,  
WORKSHOPS AND COURSES.

JOIN US THIS TERM AND  
VISIT, CREATE, MAKE  
AT STUDIO ONE TOI TŪ.

# FIND OUT MORE

The creative precinct at Studio One Toi Tū is a hub for making. At the intersection of arts and community, it is a place to meet, exchange, grow, learn and join a neighbourhood of creative activity at 1 Ponsonby Road.

If you would like to receive details of upcoming events and programmes, like our Facebook page, follow us on Instagram, visit our website or email us to subscribe to our newsletter.

09 376 3221  
[info@studioone.org.nz](mailto:info@studioone.org.nz)  
[studioone.org.nz](http://studioone.org.nz)

[facebook.com/studioonetoiitu](https://facebook.com/studioonetoiitu)  
[instagram.com/StudioOne.ToiTu](https://instagram.com/StudioOne.ToiTu)

#VisitCreateMake  
#HirePlayShow  
#StudioOneToiTu

## LOCATION

—  
1 Ponsonby Road  
Auckland, New Zealand



# CONTENTS

## OPEN

P. 8-13

## SHOW

P. 14-19

## MAKE

P. 20-39

—

## ADULTS

—

DRAWING & PAINTING

P. 22-23

PRINTMAKING

P. 24-25

CERAMICS

P. 26-30

TAXIDERMY

P. 31

EMBROIDERY

P. 31

JEWELLERY

P. 32

OTHER

P. 33

—

## KIDS & TEENS

P. 34-35

—

## SCHOOL HOLIDAYS

P. 36-39

—

## HIRE

P. 40-43



## HIRE, PLAY, SHOW



## VISIT, CREATE, MAKE

---

With opportunities for individuals and community groups through to experienced professionals, we offer a range of studio spaces for hire, offering you a place to workshop an idea, learn a new technique or sharpen your skills.

Become a part of the creative community at Studio One Toi Tū by becoming a tutor, applying to be a part of our exhibition and events programme or becoming one of our Creative Studio Residents.

## CALL FOR EXHIBITION PROPOSALS

—

Studio One Toi Tū welcomes innovative approaches to creative practice and offers opportunities for you to be a part of our diverse exhibition programme. Our four ground floor galleries can accommodate various visual art practices and are available for hire through an annual call for proposals.

Our next call for proposals will open in July 2021 for exhibitions in 2022.

## CALL FOR TUTORS PROPOSALS

Studio One Toi Tū welcomes innovative and engaging course and workshop proposals from all creative disciplines, ranging from drawing to taxidermy and weaving.

Successful tutors are supported through resources available at Studio One Toi Tū, including the use of fit-for-purpose studios and workshop rooms.



## STUDIO SPACES

---

A range of studio hire options are available at the Studio One Toi Tū precinct. We have a range of studio options and are one of the few precincts in Auckland to offer access to a 'dirty' workshop suitable for ceramicists, sculptors and object makers. We also offer a number of open studio spaces that can be hired individually or collectively for making, meetings, workshops or temporary events.

We are located in the heart of central Auckland with free wi-fi, kitchen facilities and the possibility for 24-hour access. Contact us to find out how we can support you.

## THE CELL BLOCK

---

The Cell Block studio spaces are private studios available for hire at a rate of \$78 per week. It comes with 24-hour access and is hired on a monthly basis.

## VILLA STUDIO

---

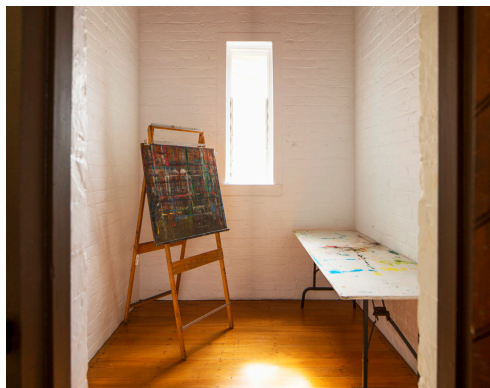
A shared studio space with access to the sculpture workshop and prep room is available for hire at a rate of \$175 per week. It comes with 24-hour access and is hired on a monthly basis.

## WORKSHOP HIRE

---

Studio One Toi Tū has two 'messy' workshops that can be hired at an hourly rate with access to our ceramic and printmaking equipment. If you have a project and need that extra space to make it happen, this is the option for you.

Contact Studio One Toi Tū to find out more information and check the availability of our studios, gallery and spaces for hire.



# OPEN

CREATIVE TALKS, POP-UPS AND EVENTS



## STUDIO ONE TOI TŪ

### PROUD CENTRES

Auckland Council is proudly partnering with Auckland Pride Festival for the 2021 season. Studio One Toi Tū is excited to be a Proud Centre and present a range of inclusive and fabulous events. We will be offering art workshops, poetry readings and live music events.

Stay tuned to our social media and the Proud Centre website for information on events at Studio One Toi Tū and around Tāmaki Makaurau.

3 - 28 FEB 2021

[PROUDCENTRES.CO.NZ](http://PROUDCENTRES.CO.NZ)

## STUDIO ONE TOI TŪ

### CREATIVE STUDIO RESIDENCY 2020: CALL FOR PROPOSALS

Applications for our 2021 Creative Studio Residency are now open!

Recipients of the residencies will receive access to resources, networking opportunities and free studio space at Studio One Toi Tū from March to November 2021.

The residencies are open across all creative categories including fine arts, creative writing, performing arts, design, object art, film and fashion - as long as there is a sound idea behind your proposal.

APPLICATIONS CLOSE SUN 24 JAN 2021

APPLY AT

[AUCKLANDCOUNCIL.SMARTYGRANTS.COM.AU/STUDIOONERESIDENCY2021](http://AUCKLANDCOUNCIL.SMARTYGRANTS.COM.AU/STUDIOONERESIDENCY2021)



ASHER WALKER, 2020



SAMUEL HARTNETT, 2020



## BIGFOOT NZ

### — FOOTWORK

Auckland Council and Bigfoot NZ present *Footwork*, a FREE one-day sneaker symposium showcasing the hip hop inspired, pro-sports ignited, pop sub-culture, of the sneakerhead. Featuring an exhibition of super exclusive models, sneaker swap meet, DJs, food, live customising and restoration demos and more.

SAT 17 APR

9AM - 4PM

COST FREE

## CREATIVE MORNINGS AKL

—  
CreativeMornings is a monthly breakfast lecture which and regularly hosted by Studio One Toi Tū. Its creative focus is a great way for bringing together like-minded individuals who are seeking inspiration and connections within their community. At the heart of each event is a conversation that speaks to the intersection of creativity and the month's theme.

FRI 26 MAR

8 - 9:30AM

THEME RIPPLE

FRI 30 APR

8 - 9:30AM

THEME PROCRASTINATE

FOR MORE INFO VISIT  
FACEBOOK/  
CREATIVEMORNINGS/  
AUCKLAND

## YOUTH WEEK 2021

—  
Youth Week is a nationwide festival of events organised by young New Zealanders to celebrate the talents, passions and success of young people. For Youth Week 2021, Studio One Toi Tū is pleased to be working alongside Ngā Rangatahi Toa and Base FM to host a exciting day of events targeted and celebrating youth. Save the day and stay tuned for event information.

SAT 8 MAY

10AM - 2PM

COST FREE



## TEAM VETIVER

---

### TERRARIUM ACTIVATION

---

A terrarium activation that includes a hands-on workshop where participants make their own terrariums. The purpose is to raise awareness of our ever-increasing destruction of the natural world, and the resulting ecological and climate crises. Although these may feel overwhelming, by starting in a small practical way, we can collectively make a big difference. Take part, create your terrarium and together we can re-green the world and restore what's gone.

This event is supported by Media Design School.

SAT 27 & SUN 28 FEB

10AM - 4PM

COST FREE

OPENING: FRI 26 FEB, 5 - 8PM



## CONNECT THE DOTS

---

### MAKE MOMENTS

---

Join Connect the Dots for a relaxed conversation drawing connections between the ideas and themes in artworks on display, followed up with a relaxed and playful arts workshop. Make Moments programmes are aimed at older people, people living with dementia, and their families.

The workshop itself runs for an hour and a half, with morning tea of a hot drink and home baking provided. Everything is provided, no experience of art or artmaking required. Our sessions are open ended, experimental and accessible.

FRI 5 MAR

10:30AM - 12PM

COST \$5

FOR MORE INFO VISIT

[CONNECTTHEDOTSNZ.EVENTBRITE.CO.NZ](https://connectthedotsnz.eventbrite.co.nz)



SHIFT AOTEAROA, KATIE  
BURSON & MATT CAMERON

—  
**MISTER MELANCHOLY**  
—

‘The only problem people have with being a recluse is that they might have to do it alone.’ Ollie is the keeper of a lighthouse, Enzo keeps forgetting to replace its light, Margot prefers to keep their island in the dark. Dolores has run away from the circus and has a package to deliver... A surreal parable of solitude and sorrow, *Mister Melancholy* examines the relationship between grief and loneliness, exploring why sometimes, isolation feels safer than human connection, and how the magnitude of the past can overwhelm or illuminate the hope of a future.

Written by Matt Cameron, designed by Rob Byrne, directed by Katie Burson and performed by Susannah Smith-Roy, Irasa Siave, Mustaq Missouri and Hamish Annan.

TUE 16 - SAT 20 FEB  
7PM

FOR MORE INFO VISIT  
[AUCKLANDFRINGE.CO.NZ](http://AUCKLANDFRINGE.CO.NZ)



MELODY RACHEL

—  
**YOU KNOW I**  
—

*You Know I* is an investigation of the self. It is self-centred as much as it is universal.

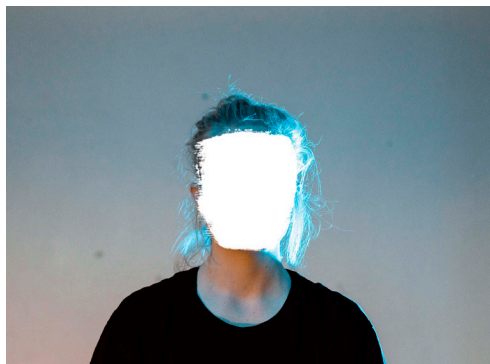
‘You know I’ve had this thought...’.  
‘You know I understand it this way...’.  
‘You know I was thinking...’.

Colliding dance and fragmented text with an experimental twist, *You Know I* is a solo performance that delves into questions surrounding identity and seeks to navigate that pesky internal narrative happening inside my/our head(s).

Created and performed by Melody Rachel, this work is part of the Auckland Fringe Festival 2021. Bookings are required for this free/koha event.

WED 2 - FRI 4 MAR  
8PM  
COST FREE

FOR MORE INFO VISIT  
[AUCKLANDFRINGE.CO.NZ](http://AUCKLANDFRINGE.CO.NZ)



# SHOW



KAYLA ALLISON

—  
**LET ME BE  
PERFECTLY QUEER**  
—

*Let Me Be Perfectly Queer* is a collection of poems by Kayla Allison exploring her journey as a millennial gay woman, trying to figure herself out and getting caught up in hopeless romance.

The wordplay is flirtatious and suggestive, and alludes to her experiences such as her first kiss with a woman. Written with an urgent energy, the poems express what Allison describes as “feelings poured out like espresso over ice”.

GALLERY 1  
21 JAN - 18 FEB

OPENING:  
WED 20 JAN, 5PM



KAYLA ALLISON, 2020

JAMES S WATSON

—  
**A LONG DRAWN  
OUT AFFAIR**  
—

*A long drawn out affair* is a survey of James' work completed outside of his Elam studies. In 2008 James was diagnosed with Dysthymia a form of depression and in 2010 he picked up a pencil and started drawing. Aided by his drawing routine, by 2012 James' depression had lifted and he hasn't stopped drawing since.

Each drawing represents a triumphant moment where obstructive thoughts, and dark emotional storms weren't given time to grow.

GALLERY 2  
21 JAN - 18 FEB

OPENING:  
WED 20 JAN, 5PM



JAMES S WATSON, 2012

TWO HANDS TATTOO

—  
**FOREVER**  
—

*Forever* is a collaborative exhibition that will include work from some of the finest tattooers throughout New Zealand and across the globe. This exhibition will act as a 'taster' of what to expect on the weekend of Tattoo Time. Each artist involved will create a piece based on their own take of the word 'forever'.

GALLERY 3  
21 JAN - 18 FEB

OPENING:  
WED 20 JAN, 5PM



VICTOR WEBSTER, 2019



CHAS FOXALL

## RETRO HERO

Twenty years ago, The Hero Parade moved from Queen Street to Ponsonby Road, showcasing vibrant floats to celebrate the Rainbow Community of Tamaki Mākauarau. They made their way past an audience of thousands, from the corner of Karangahape Road to Three Lamps. There were many detractors, despite this, the parade thrived for eight years as one of the most popular events in the city, rivalling the Sydney Mardi Gras.

Chas Foxall was commissioned to cover two of the early parades. This archive is of just one of Auckland's Hero Parades, featuring a few well-known personalities of the time. It chronicles an event that some feel is not appropriate, though it remains loved by many.

GALLERY 4  
21 JAN - 18 FEB

OPENING:  
WED 20 JAN, 5PM



CHAS FOXALL

AUCKLAND ARTS FESTIVAL

## THE DAWN RAIDS: EDUCATE TO LIBERATE

Documenting the courageous activities of the Polynesian Panthers and their fight for social justice, *The Dawn Raids – Educate to Liberate* highlights and acknowledges the group's place in the social and cultural history of Aotearoa. Using the setting of a typical 1970s Pacific Island family lounge room to look back at the dawn raid activities in New Zealand, the exhibition features original artworks; memorabilia and photographs from the dawn raid era; and informative, historical perspectives of the events drawn from extensive research and personal interviews undertaken by author, Pauline (Vaeluaga) Smith. Two New Zealand documentaries, *Dawn Raids* (2005) and *Polynesian Panthers* (2010), will also screen in the gallery alongside these works.

GALLERY 1, 2 & 3  
25 FEB - 25 MAR

OPENING:  
WED 24 FEB, 5PM



JOHN MILLER

TĪPARE

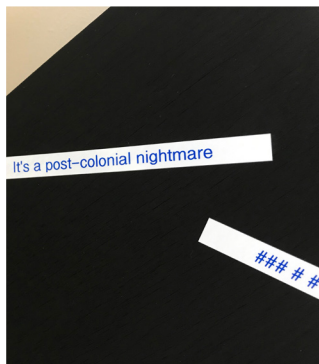
—  
LABEL MAKERS  
—

*Label Makers* is a series of works created by Tīpare in 2020.

“We’re all labelled all day, every day. We’re generationally labelled, era labelled and we’re event labelled. We even attempt to label emotions” says Tīpare. These works reflect a change, observed by the artist, in the way we apply terms to others and ourselves. “We’re not just defining each other, we’re defining ourselves”.

GALLERY 4 & SIDEWALK  
25 FEB - 25 MAR

OPENING:  
WED 24 FEB, 5PM



TĪPARE, 2020

ANN POULSEN

—  
THE LINEAR AND  
THE PAINTERLY  
—

An exploration of the development of style as the opposition between the linear and the painterly. The linear emerges as a more intellectual approach, while the painterly is about process, responding to what is happening on the canvas, an additive way of making out of which the composition emerges.

GALLERY 1  
1 - 29 APR

OPENING:  
WED 31 MAR, 5PM



ANN POULSEN, 2020

PAULINE B.

—  
SKATEBOARD  
PROJECT  
—

GreenCoastlines was created by Pauline B. as an ongoing project to revive old skateboards by imagining a new life to them through art.

This project was inspired by Pauline's trips to San Francisco, New Zealand landscapes, other world travels and graphism. These hand painted works draw on her personal memories, as well as her own creative imagination. Pauline intends for this project to celebrate skateboarding culture as well as cherish the artistry and craft that goes into a well-made skateboard.

GALLERY 2  
1 - 29 APR

OPENING:  
WED 31 MAR, 5PM



PAULINE B., 2020

PUASAU ISAIA, ERIC  
PRITCHARD, MARK DEVCICH  
& LINDA ROCHE

## KERINGLE PARK

*Keringle Park* showcases and celebrates the creativity of the 'Keringle Crew' from Papakura, Auckland. Meeting fortnightly in the rest home's dining room, residents Puasau Isaia, Eric Pritchard and Mark Devcich work with artist Linda Roche as part of Auckland's creative ageing charity, Connect the Dots, Toi Ako mentoring programme. The works of the Keringle four are visually very different - Mark's hard-edge geometric works, Puasau's soft pencilled palm tree motif, Eric's layers of brightly coloured line, and Linda's grids of muted colour - but all share a focused investigation of repetition.

GALLERY 3 & 4  
1 - 29 APR

OPENING:  
WED 31 MAR, 5PM

JUDITH MOORE-CHISHOLM

## STRIPES TO EXCITE

Judith's exploration of stripes has been a journey of anticipation and discovery for her. She says, "the beginning is a possibility that progresses into a game with enormous potential". The stripe sequences allow colours to harmonise, while maintaining the form of the stripe itself, allowing each painting to have, what the artist describes as "a unique song".

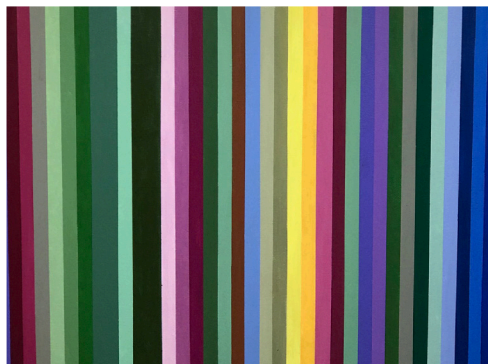
Each work has its own song variation to be interpreted individually by each viewer.

SIDEWALK  
1 - 29 APR

OPENING:  
WED 31 MAR, 5PM



ANDREA GASKIN, 2020



JUDITH MOORE-CHISHOLM, 2020

# MAKE

# ADULTS



ALVIN XIONG

REALISTIC DRAWING

Hone your skills in traditional drawing techniques and simplify the challenge of capturing a likeness in this stimulating course. Using reference materials supplied by the tutor and a photo of your choice, you will learn methods for starting a drawing and how to build on your work using shading, outline and texture. The tutor will recommend tips for correcting shape and will help make your drawings look true to life.

WHEN THU  
9.30AM - 12PM

STARTS 18 FEB

LENGTH 8 WEEKS

COST \$240

CLASS 10 MAX

ADDITIONAL MATERIALS LIST WILL  
BE PROVIDED.

ENROL AT [STUDIOONE.ORG.NZ](http://STUDIOONE.ORG.NZ)



ALVIN XIONG

PORTRAIT PAINTING IN OIL

Explore realistic portrait painting while working from a photo of your choosing. Learn oil painting techniques and how to use various brushes. You will begin with underpainting and then move to developing the structure of the head and facial features. The tutor will help with lighting, shading and colour choices. All ability levels are welcome, as the class is structured to provide one on one instruction to each student.

WHEN THU  
1 - 3.30PM

STARTS 18 FEB

LENGTH 8 WEEKS

COST \$240

CLASS 10 MAX

ADDITIONAL MATERIALS LIST WILL  
BE PROVIDED.

ENROL AT [STUDIOONE.ORG.NZ](http://STUDIOONE.ORG.NZ)





ADULT 051

JARAD BRYANT

EXPRESSIVE  
LIFE DRAWING  
& PAINTING

The human form will inspire you in this fun life drawing course, suitable for all levels of experience. Each week you will develop your artistic abilities and intuitive direction as you work through guided exercises with professional life models and a supportive tutor.

WHEN MON  
7 - 9PM  
STARTS 15 FEB  
LENGTH 9 WEEKS  
COST \$230  
CLASS 13 MAX

ADDITIONAL MATERIALS  
LIST WILL BE PROVIDED ON  
ENROLMENT

ENROL AT  
STUDIOONE.ORG.NZ

ADULT 171

HAN NAE KIM

DRAWING ON A  
LARGE SCALE

Drawing can often be a small, and intimate process. In this class you will embrace drawing on a large scale to push the boundaries. You will be experimenting with different processes to translate your ideas into large works. You will learn how to prepare your working surfaces including canvas, paper and wood.

WHEN TUE  
7 - 9PM  
STARTS 16 MAR  
LENGTH 3 WEEKS  
COST \$180  
CLASS 10 MAX

ADDITIONAL MATERIALS  
LIST WILL BE PROVIDED

ENROL AT  
STUDIOONE.ORG.NZ

ADULT 081

HAN NAE KIM

A-Z CHARCOAL  
DRAWING

An intensive workshop designed for art enthusiasts of all ages and experience levels. Using charcoal you will experiment with a range of drawing processes to explore this medium's limitless possibilities. Through a series of exercises, you will then learn how to introduce other media to the charcoal. Come along and discover the beauty of charcoal!

WHEN SAT 27 FEB  
10AM - 2PM  
COST \$115  
CLASS 12 MAX  
MATERIALS INCLUDED

ENROL AT  
STUDIOONE.ORG.NZ



## BETH SERJEANT

### DROP-IN PRINT STUDIO

Come along and work independently in our printmaking studio. Studio One Toi Tū has recently acquired a new large-scale printing press, and we want our community to utilise it! Bring your own projects and work alongside like-minded creatives. Beth will be able to provide technical advice and some limited materials will be available.

WHEN TUE  
10AM - 2PM

STARTS 2 FEB

COST \$5 PER HOUR

BRING YOUR OWN TOOLS, MATERIALS, AND PROJECTS TO WORK ON.

ENROL AT  
STUDIOONE.ORG.NZ



## BETH SERJEANT

### BOOKMAKING

Join artist Beth Serjeant as she helps you create bespoke, handmade books. Create your own diary for 2021, or a unique set of books as gifts for your friends and family. You will be using quality materials including wood and handmade paper to create a set of four diary sized handmade books. Learn a variety of stitch and book binding techniques. This weekend workshop is aimed at all levels of experience.

WHEN SAT 27 & SUN 28  
MAR  
10AM - 4PM

COST \$200

CLASS 6 MAX

MATERIALS INCLUDED

ENROL AT  
STUDIOONE.ORG.NZ



## LUCIE BLAZE

### LEARN AND CREATE

Celebrate International Women's Day with artist, Lucie Blaze. The workshop will begin by talking about the inspiring women in our communities, then you'll work on a hand-embellished paper collage on canvas to express what they mean to you. The workshop is designed to be a fun and empowering experience, using art to explore the lives and work of great women who've come before us and to find our own inspiration.

WHEN MON 8 MAR  
10AM - 12PM

COST FREE

CLASS 13 MAX

MATERIALS INCLUDED

ENROL AT  
STUDIOONE.ORG.NZ



SYBILLE SCHLUMBOM

MOKUHANGA WORKSHOP

Enjoy a weekend of creativity! Learn about mokuhanga in a relaxed environment and create your own postcard sized prints. Mokuhanga has a long history in Japan and is best known for the Edo period ukiyo-e prints. The process uses water-based inks and is executed with a handheld baren instead of a printing press.

In this workshop you will work with partly pre-cut plates. With one on one support from the tutor you will carve a plate for the two-colour image you will print on the second day. Simple designs will be available, but feel free to bring your sketch books and ideas!

WHEN SAT 13 & SUN 14 MAR  
10AM - 3PM  
COST \$130  
CLASS 12 MAX  
MATERIALS INCLUDED

ENROL AT [STUDIOONE.ORG.NZ](http://STUDIOONE.ORG.NZ)



TOSH AHKIT

TOTES TE REO

Come and join in a screen-printing workshop that aims to normalise the use of te reo and encourage kaitiakitanga through the creation of one-off reusable tote bags with te reo slogans.

This workshop will be delivered by Tosh, who has an established career in the arts that is based on workshopping ways to communicate through the process of screen printing and printmaking. At the end of the day you will have printed a reusable tote bag and learnt some of the basics of screen and fabric printing.

AGE ALL AGES, PARENTS MUST ACCOMPANY MINORS  
WHEN SAT 20 MAR  
10AM - 2PM  
COST \$20  
CLASS 9 MAX  
MATERIALS INCLUDED

ENROL AT [STUDIOONE.ORG.NZ](http://STUDIOONE.ORG.NZ)



## KAIRAVA GULLATZ

## UNIQUE CLAY VESSELS

This course will cover the design and production of ceramic vessels. Techniques on how to build with clay will be demonstrated, including ways to decorate surfaces with slip colours, carving, embossing and 3D applications. You will become familiar with clay handbuilding as well as throwing vessels on the wheel. Glazing techniques and stacking the kiln are also part of this course. Suitable for beginner and advanced students.

WHEN WED

6 - 9PM

STARTS 10 MAR

LENGTH 6 WEEKS

COST \$345

CLASS 9 MAX

INCLUDES UP TO 10KG CLAY, GLAZES  
AND FIRINGSENROL AT [STUDIOONE.ORG.NZ](http://STUDIOONE.ORG.NZ)

## KAIRAVA GULLATZ

## CLAY EXPLORATIONS

Is there something you always wanted to shape in clay? Whether it is functional or sculptural, this is the class to support your creative ventures. The class offers the opportunity to experiment with a variety of modelling techniques under the guidance of experienced tutor, Kairava. Students will discover their individual way of handling the material, as well as enjoy sharing time to be creative with fellow students. Surface decorations with slips and glazes are part of the teaching.

WHEN THU

10AM - 1PM

STARTS 11 MAR

LENGTH 6 WEEKS

COST \$345

CLASS 9 MAX

INCLUDES UP TO 10KG CLAY, GLAZES  
AND FIRINGSENROL AT [STUDIOONE.ORG.NZ](http://STUDIOONE.ORG.NZ)

ADULT 181

## KAIRAVA GULLATZ

### — THROWING YOUR FUTURE CROCKERY

—  
Experience throwing your own pots for daily use. We will also explore a variety of handbuilding techniques for creating unique shapes of all kinds. There will be demonstrations covering a variety of techniques to decorate the surface of the vessels using carving, applications and colourful slips. All vessels will be fired and glazed for you.

WHEN SAT 20 & SUN 21 MAR  
10AM - 3PM

COST \$295

CLASS 9 MAX

INCLUDES UP TO 10KG CLAY, GLAZES  
AND FIRINGS

ENROL AT [STUDIOONE.ORG.NZ](http://STUDIOONE.ORG.NZ)

ADULT 121

## VAL ONG

### — THROW IT DOWN

—  
An intensive eight-week ceramics course for those wanting to learn the basics of contemporary clay making on the wheel. This introductory course is ideal for students wanting to learn how to throw a variety of domestic shapes including cups, bowls and cylinders. This relaxed course is suitable for anyone who would like to give ceramics a go and enjoy some good banter!

WHEN THU  
6.30 - 9PM

STARTS 11 MAR

LENGTH 8 WEEKS

COST \$360

CLASS 8 MAX

INCLUDES UP TO 10KG CLAY, GLAZES  
AND FIRINGS

ENROL AT [STUDIOONE.ORG.NZ](http://STUDIOONE.ORG.NZ)





ADULT 141

VAL ONG

DROP-IN CERAMICS STUDIO

Need some time to work on a project? Want some technical advice on your process? On Fridays you can now work independently in our fully equipped ceramics studio. This weekly drop-in session is ideal for practitioners requiring studio space to work on their own projects or practice. Our technician, Val Ong, will be available to provide basic technical advice.

WHEN     FRI  
            12 - 5PM  
COST     \$5 PER HOUR  
STARTS   12 MAR

BRING YOUR OWN TOOLS, MATERIALS,  
AND PROJECTS TO WORK ON.

ENROL AT [STUDIOONE.ORG.NZ](http://STUDIOONE.ORG.NZ)



ADULT 041

SIRIPORN FALCON-GREY

HANDBUILDING:  
MAKE YOUR OWN  
MINI PLANTER

An exciting handbuilding workshop to learn how to create your own funky mini-planter! Using the slab building technique, your plants will be happy in their new custom pot handmade by you. Planters will be bisque and glaze fired and ready for pick up at a later date. Students should bring their own apron or hand towel.

WHEN     FRI 12 FEB  
            10 - 11.45AM  
COST     \$55  
CLASS    10 MAX  
MATERIALS INCLUDED

ENROL AT [STUDIOONE.ORG.NZ](http://STUDIOONE.ORG.NZ)





SIRIPORN FALCON-GREY

HANDBUILDING:  
MAKE YOUR OWN MUG

This handbuilding workshop will teach you how to make a mug using the slab building technique. Finish off your one of a kind piece by creating your own individual markings and textures. Your mug will be bisque and glaze fired and ready for pick up at a later date. Students should bring their own apron or hand towel.

WHEN     FRI 12 MAR  
            10 - 11.45AM  
COST     \$55  
CLASS    10 MAX  
MATERIALS INCLUDED

ENROL AT [STUDIOONE.ORG.NZ](http://STUDIOONE.ORG.NZ)



SIRIPORN FALCON-GREY

HANDBUILDING:  
MAKE YOUR OWN BOWL

Create your own bowl for a salad, cereal, or any of your favorite foods! This workshop will use a mixture of hand-building processes such as coiling and pinch pot techniques. The class will also have an emphasis on the various textures that can be applied to the clay. Your handmade bowl will be bisque and glaze fired and ready for pick up at a later date.

WHEN     FRI 9 APR  
            10 - 11.45AM  
COST     \$55  
CLASS    10 MAX  
MATERIALS INCLUDED

ENROL AT [STUDIOONE.ORG.NZ](http://STUDIOONE.ORG.NZ)



HAN NAE KIM

KINTSUGI: THE ART OF  
BROKEN PIECES

Do you have damaged pieces of art made with wood, metal or ceramics? Embrace the markings of broken objects and transform them with lacquer and varnish decorated with gold and silver leaf. Lacquer is one of the oldest natural materials used in East Asian countries to repair damaged objects. Amend and adorn your fractured pieces and realise their newly restored glory.

WHEN MON  
7 - 9PM  
STARTS 15 MAR  
LENGTH 2 WEEKS  
COST \$195  
CLASS 10 MAX

BRING YOUR OWN DAMAGED OBJECTS,  
ALL OTHER MATERIALS INCLUDED

ENROL AT [STUDIOONE.ORG.NZ](http://STUDIOONE.ORG.NZ)

MARGARET FEENEY

## WATER SYSTEMS PROJECT

Join artist Margaret Feeney in a free and inclusive creative workshop. The Water Systems Project invites people to come together to make a system of small, connected sculptures to provide water and shelter for birds and insects during times of drought.

Using charcoal and ink students will first develop their ideas. Afterwards they will use clay to make small-scale sculptures for water receptacles. Students will also use plants such as bamboo, tī kōuka leaves, and ginger to make weavings and rope to construct animal habitats. This workshop is free and everyone is welcome. No experience or knowledge of art is necessary.

WHEN WED 10 FEB  
10AM - 3PM  
COST FREE  
CLASS 12 MAX  
MATERIALS INCLUDED

ENROL AT [STUDIOONE.ORG.NZ](http://STUDIOONE.ORG.NZ)



ANTOINETTE RATCLIFFE

—  
INTRODUCTION TO  
TAXIDERMY: SMALL  
CREATURES AND BIRDS  
—

Ever wanted to learn how to do taxidermy? Antoinette is a practicing artist who incorporates taxidermy into her artworks. She will demonstrate the basics of small animal taxidermy and help you create your first piece.

Together you will discuss the ethics involved with taxidermy, as well as what to expect during the process including health and safety elements and mounting considerations.

You will need to supply your own specimen for the class.

WHEN     SAT 6 MAR  
             9AM - 5PM  
COST     \$235  
CLASS    8 MAX  
MATERIALS INCLUDED

ENROL AT [STUDIOONE.ORG.NZ](http://STUDIOONE.ORG.NZ)



SIOBHAN RIDGLEY

—  
BEGINNER'S EMBROIDERY  
—

In this beginner's embroidery course, you will learn an array of stitch techniques. Experiment with botanical embroideries and techniques such as stem stitch, French knots and five prong roses. Learn how to use your equipment as well as the modern tricks of the trade. Explore different thread counts and learn how to render with brick stitch. Come and enjoy this meditative hobby in a welcoming safe space.

WHEN     WED  
             6.30 - 8PM  
STARTS    10 FEB & 10 MAR  
LENGTH   4 WEEKS  
COST      \$70  
CLASS     15 MAX

STUDENTS TO BRING THEIR OWN HOOP AND NEEDLES, ALL OTHER MATERIALS PROVIDED.

ENROL DIRECTLY AT  
[SIOBHANRIDGLEY@GMAIL.COM](mailto:SIOBHANRIDGLEY@GMAIL.COM)



HOLLIE RYAN

BEGINNER:  
POLYMER CLAY EARRINGS

Discover everything you need to know to create art for your ears using polymer clay. This introductory course will teach you conditioning clay, marbling, texturing, cutting, mixing colours and creating patterns. You can take home as much jewellery as you can make! This workshop is ideal for beginners or as a refresher if you've used polymer clay before. Bring your own ideas along!

WHEN     SAT 27 FEB &  
             SAT 13 MAR  
             10AM - 2PM  
CLASS    12 MAX  
COST     \$120  
MATERIALS INCLUDED

ENROL DIRECTLY AT  
HARKHANDMADE.COM



HOLLIE RYAN

INTERMEDIATE:  
POLYMER CLAY EARRINGS

If you've taken Hollie's original Polymer Clay Earring course, come along and extend your skills. In this workshop you will learn more advanced techniques like blending colours, using metal leaf, creating canes and building more complex patterned slabs. All materials will be provided.

WHEN     SAT 27 MAR  
             10AM - 2PM  
CLASS    12 MAX  
COST     \$120  
MATERIALS INCLUDED

ENROL DIRECTLY AT  
HARKHANDMADE.COM



## THE RECREATORS

—

## UPCYCLE PAINTING

—

In this workshop, The ReCreators will teach you various painting techniques that can be used for upcycling furniture or other decor at home. Reusing wooden offcuts we will practice techniques such as white wash effect, shabby chic effect, layered colours and staining. Students will also learn how to make chalk paint and where to get zero waste discounted paint. This class is suited for adults and not suitable for young children.

WHEN THU 11 FEB  
6.30 - 8.30PM  
CLASS 10 MAX  
COST \$10  
MATERIALS INCLUDED

ENROL DIRECTLY AT [THERECREATORS.CO.NZ](http://THERECREATORS.CO.NZ)

JULIANA DURÁN &  
SANDRA BLANCO

—

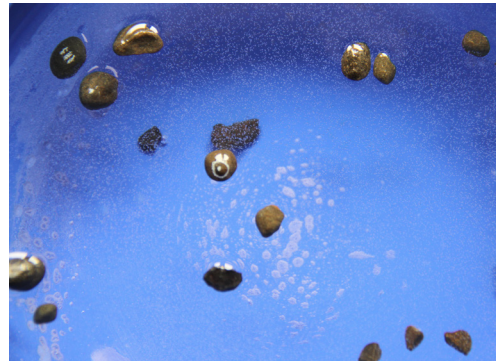
AMULET MAKING AND  
WRITING

—

If you had the chance to leave a written message for your descendants, what would it say? If you had the chance to create an amulet for your offspring, what would it look like? In this workshop students will learn how to create an empowering and personal amulet and to articulate their ideas into a written message. Please note this workshop will be facilitated in Spanish.

WHEN SAT 27 MAR  
11AM - 2PM  
CLASS 8 MAX  
COST \$10  
MATERIALS INCLUDED

ENROL AT  
[STUDIOONE.ORG.NZ](http://STUDIOONE.ORG.NZ)







**KAIRAVA GULLATZ**  
—  
**HEAD ON!**  
—

Decorative bottles with unusual lids is what we will be making from clay in Term 1. We will create animal heads or special characters to adorn our hand modelled vessels. You will also be able to explore how to throw small vessels on a pottery wheel.

AGE 6 TO 12  
WHEN WED, 4 - 5.30PM  
STARTS 10 MAR  
LENGTH 6 WEEKS  
COST \$185  
CLASS 9 MAX  
MATERIALS INCLUDED

ENROL AT  
[STUDIOONE.ORG.NZ](http://STUDIOONE.ORG.NZ)



**TOSH AHKIT**  
—  
**HAVE YOUR SAY!**  
**PRINTMAKING**  
—

Do you have something you want to say? Have you ever wanted to create a poster but didn't know where to start? In this course, we will cover a range of printing techniques and learn the basics of composition and design. By the end of four weeks you will have a series of posters and zines to share with your community.

AGE 13 TO 18  
WHEN TUE, 4 - 6PM  
STARTS 2 FEB  
LENGTH 4 WEEKS  
COST \$60  
CLASS 9 MAX  
MATERIALS INCLUDED

ENROL AT  
[STUDIOONE.ORG.NZ](http://STUDIOONE.ORG.NZ)



**TANJA NOLA**  
—  
**TEEN ARTWORK**  
—

In a fully equipped studio, students work to develop their own visual language while learning drawing, painting, printmaking, ceramics and 3D construction skills. Experienced tutor, Tanja, supports students in art-making techniques. Directed by individual needs, students discover their creative potential and build confidence in their art practice.

AGE 13 TO 17  
WHEN THU, 4 - 6PM  
STARTS 25 FEB  
LENGTH 7 WEEKS  
COST \$250  
CLASS 8 MAX  
MATERIALS INCLUDED

ENROL AT  
[STUDIOONE.ORG.NZ](http://STUDIOONE.ORG.NZ)





# SCHOOL HOLIDAYS



## KAIRAVA GULLATZ

—  
WATERFALLS & FANTAILS  
—

This ceramic class is about designing and modelling a colourful wall plaque with three dimensional applications. Our inspiration is the beautiful scenery of the Waitakere Ranges with their rich variety of wildlife and plants. Come along and have fun being creative with clay! Students will also be able to use a pottery wheel to throw small pots.

AGE 5 - 12  
WHEN MON 18 & TUE 19 JAN  
10AM - 2PM  
COST \$180  
CLASS 12 MAX  
MATERIALS INCLUDED

ENROL AT [STUDIOONE.ORG.NZ](http://STUDIOONE.ORG.NZ)

## KAIRAVA GULLATZ

—  
ALL AROUND MY HAT  
—

What would you look like wearing a large, colourful, tall top hat or one with a birds nest on it? In this workshop you will be making unique clay busts showing your heads crowned with unusual hats. Everything is shaped after your own imagination! You will learn about clay modelling techniques and have the opportunity to use a pottery wheel to throw small pots.

AGE 6 - 14  
WHEN WED 20 & THU 21 JAN  
10AM - 2PM  
COST \$180  
CLASS 12 MAX  
MATERIALS INCLUDED

ENROL AT [STUDIOONE.ORG.NZ](http://STUDIOONE.ORG.NZ)

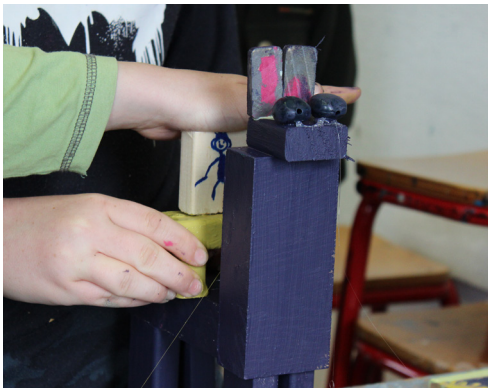
THE RECREATORS

JUNK CREATIVITY

In this workshop, The ReCreators will bring in a variety of materials for kids to pick from and design their own creative sculptures. Children will first draw what their sculptures will look like and label the colours they plan to paint for each part. They will be using reclaimed wood, tins, plastic containers, buttons, toilet rolls, cardboard, etc. They will learn how to safely cut and assemble parts together with wood glue, drilling, and a hot glue gun.

AGE 5 - 12  
WHEN MON 25 JAN  
10AM - 2PM  
COST \$10  
CLASS 12 MAX  
MATERIALS INCLUDED

ENROL DIRECTLY AT THERECREATORS.CO.NZ



THE RECREATORS

JEWELLERY & BRAID MAKING

In this workshop, kids will learn how to make cords for necklaces and bracelets. They will reuse beads, buttons, threads and wool as well as painting on reclaimed wooden laser-cut pieces to design their own personalised jewellery.

AGE 5 - 12  
WHEN TUE 26 JAN  
10AM - 2PM  
COST \$10  
CLASS 12 MAX  
MATERIALS INCLUDED

ENROL DIRECTLY AT THERECREATORS.CO.NZ



## THE RECREATORS

### —

## TAPESTRY WEAVING

### —

In this workshop, The ReCreators will bring in a variety of colourful wool and tshirt yarn for kids to pick from and weave on their own handmade loom. This is a mindful task that is great for improving finger dexterity and concentration.

AGE 5 - 12  
 WHEN WED 27 JAN  
 10AM - 2PM  
 COST \$10  
 CLASS 12 MAX  
 MATERIALS INCLUDED

ENROL DIRECTLY AT [THERECREATORS.CO.NZ](http://THERECREATORS.CO.NZ)

## LEELA BHAI

### —

## BUNNY LOVE

### —

Our bunny, Cinderella, will be our star model for this workshop. Starting with observational drawing, you will experiment with a wide variety of mark making materials including pencil, charcoal, Indian ink and pastels, aiming to capture the detail, movement and character of Cinderella. We will then move into larger scale paintings or sculpture, encouraging each student to follow their own direction.

AGE 5 - 12  
 WHEN THU 28 JAN  
 10AM - 2PM  
 COST \$55  
 CLASS 12 MAX  
 MATERIALS INCLUDED

ENROL AT [STUDIOONE.ORG.NZ](http://STUDIOONE.ORG.NZ)



# HIRE



## VENUE HIRE

Studio One Toi Tū has a range of adaptable outdoor and indoor spaces to meet your needs and bring your idea to life. Come in to view our spaces for hire, we will happily show you around and discuss how we can support your event or practice.

### MEETING AND EVENT SPACE

---

Whether you're a designer looking for a space to show your latest collection, an artist looking for an exhibition space or a book club seeking a central meeting place - we have the space for you. To find out how we can support you, visit 1 Ponsonby Road, or call us on 09 376 3221.

### HIRE RATES

---

We have a range of room hire options available at an hourly rate\*. To view our rates or to book a room please visit [booking.aucklandcouncil.govt.nz/facilities](http://booking.aucklandcouncil.govt.nz/facilities)

\* A community rates discount is available by application

## SPACES FOR HIRE

### ROOM 5

---

A versatile meeting, workshop and function room with heating and air conditioning. Capacity: 50 people.

### ROOM 6

---

A sunny versatile meeting, workshop and function room with views onto the rear deck. Capacity: 25 people.

### ROOM 10

---

A large clean studio space used for conferences, seminars, workshops, pop-up exhibitions, film screenings and more. The space can be booked hourly or weekly. Capacity: 100 people.

### ROOM 11

---

A dedicated art workshop to accommodate visual art practices or creative workshops. Fitted with a printing press, tables, chairs, easles, lighting track and a spotlight. This space can be booked hourly, daily, or half-daily. Capacity: 30 people.

### ROOM 12

---

Dedicated art workshop set up to accommodate sculpture practices. Fitted with pottery wheels. This space can be booked hourly, daily, or half-daily. Capacity: 20 people.





# STUDIO ONE — TOI TŪ

## OPENING HOURS

### All spaces

Mon – Fri 9am – 5pm  
Sat & Sun Closed

### Residents

24/7 access

## ACCESS

All rooms and galleries  
are wheelchair accessible.

## LOCATION

1 Ponsonby Road  
Auckland, New Zealand

## CONTACT

09 376 3221  
[info@studioone.org.nz](mailto:info@studioone.org.nz)  
[studioone.org.nz](http://studioone.org.nz)

[facebook.com/studioonetoiu](https://facebook.com/studioonetoiu)  
[instagram.com/StudioOne.ToiTu](https://instagram.com/StudioOne.ToiTu)

#VisitCreateMake  
#HirePlayShow  
#StudioOneToiTu