

STUDIO
ONE
—
TOI TŪ

WHAT'S ON
—
APR - JUL 2020

PROGRAMME

2

Waitematā
Local Board
Auckland Council



KIA ORA AND WELCOME
TO STUDIO ONE TOI TŪ.

OUR UNIQUE LINE UP OF
FUN AND FREE EVENTS
THIS AUTUMN INCLUDE
EXHIBITIONS, CREATIVE
CONVERSATIONS,
WORKSHOPS AND COURSES.

JOIN OUR CREATIVE
COMMUNITY AND VISIT,
CREATE, MAKE AT
STUDIO ONE TOI TŪ.

FIND OUT MORE

The creative precinct at Studio One Toi Tū is a hub for making. At the intersection of arts and community, it is a place to meet, exchange, grow, learn and join a neighbourhood of creative activity at 1 Ponsonby Road.

If you would like to receive details of upcoming events and programmes, like our Facebook page, follow us on Instagram, visit our website or email us to subscribe to our newsletter.

09 376 3221
info@studioone.org.nz
studioone.org.nz

facebook.com/studioonetoiitu
instagram.com/StudioOne.ToiTu

#VisitCreateMake
#HirePlayShow
#StudioOneToiTu

LOCATION

—
1 Ponsonby Road
Auckland, New Zealand



CONTENTS

OPEN

P.8 - 13

SHOW

P.14 - 21

MAKE

P.22 - 44

—

ADULTS

P.24 - 35

—

PHOTOGRAPHY

P.12-13 & 35

CARVING

P.13

PRINTMAKING

P.24-25

DRAWING & PAINTING

P.26-28

BOOKMAKING

P.28

CREATIVE WRITING

P.29

CREATIVE DEVELOPMENT

P.29

CROSS STITCH

P.30

JEWELLERY

P.30-31

CERAMICS

P.32-34

TAXIDERMY

P.35

—

KIDS & TEENS

P.36-38

SCHOOL HOLIDAYS

P.39-44

—

AUTUMN

P.40-42

WINTER

P.43-44

—

HIRE

P.46 - 47

HIRE, PLAY, SHOW



VISIT, CREATE, MAKE

With opportunities for individuals and community groups through to experienced professionals, we offer a range of studio spaces for hire, offering you a place to workshop an idea, learn a new technique or sharpen your skills.

Become a part of the creative community at Studio One Toi Tū by becoming a tutor, applying to be a part of our exhibition and events programme or becoming one of our Creative Studio Residents. More details on page 6.

CALL FOR EXHIBITION PROPOSALS

—

Studio One Toi Tū welcomes innovative approaches to creative practice and offers opportunities for you to be a part of our diverse exhibition programme. Our four ground floor galleries can accommodate various visual art practices and are available for hire through an annual call for proposals.

Our call for proposals for 2021 will open on Monday 1 June 2020 and close on Sunday 28 June at midnight.

CALL FOR TUTORS PROPOSALS

Studio One Toi Tū has a biannual call for tutors to share their ideas and skills with our community. We welcome innovative and engaging course and workshop proposals from all creative disciplines, ranging from drawing to taxidermy and weaving. Successful tutors are supported through resources available at Studio One Toi Tū, including the use of fit-for-purpose studios and workshop rooms. To find out about our current tutors visit: studioone.org.nz/people

CALL FOR RESIDENCY

—

Our Creative Studio Residency programme is open to applicants once a year. We select between two to five projects annually. Successful applicants will be supported by Studio One Toi Tū resources, networks and mentoring. The Residency concludes with an achievable exhibition or event to be delivered between August and September 2021.

Current Residents include Lunar Collaborative, Andrea Gaskin, Icao Tiseli, Juliana Duran, Sandra Blanco and Sarah Holten-Warren.

Applications for our Creative Residency in 2020-2021 will open on 1 August and close on 30 August 2020.



STUDIO SPACES

A range of studio hire options are available at the Studio One Toi Tū precinct. Studio One Toi Tū is a hub for creatives and community activities, where designers, writers, artists, performers, musicians and other creative people can make and collaborate. We have a range of studio options and are one of the few precincts in Auckland to offer access to a 'dirty' workshop suitable for ceramicists, sculptors and object makers. We also offer a number of open studio spaces that can be hired individually or collectively for making, meetings, workshops or temporary events.

We are located in the heart of central Auckland with free wi-fi, kitchen facilities and the possibility for 24-hour access. Contact us to find out how we can support you.

THE CELL BLOCK

The Cell Block studio spaces are private studios available for hire at a rate of \$78 per week. It comes with 24-hour access and is hired on a monthly basis.

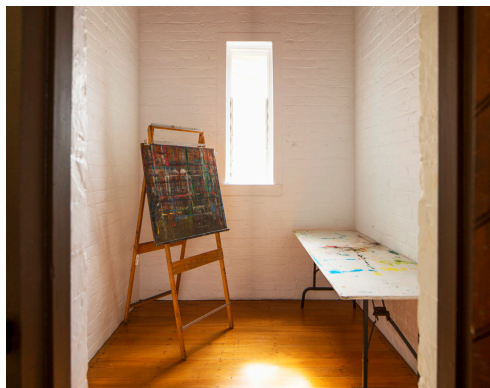
VILLA STUDIO

A shared studio space with access to the sculpture workshop and prep room is available for hire at a rate of \$175 per week. It comes with 24-hour access and is hired on a monthly basis.

WORKSHOP HIRE

Studio One Toi Tū has two 'messy' workshops that can be hired at an hourly rate with access to our ceramic and printmaking equipment. If you have a project and need that extra space to make it happen, this is the option for you.

Contact Studio One Toi Tū to find out more information and check the availability of our studios, gallery and spaces for hire.



OPEN



CREATIVE TALKS, POP-UPS AND DROP-INS



MAKE IT HAPPEN HERE

From creative conversations to pop-up exhibitions, there's always something happening at 1 Ponsonby Road. If you require a studio for a project or workshop, would like to showcase your work or are in need of a venue to host a special event, contact us to discuss the opportunities available for you at Studio One Toi Tū.

CREATIVEMORNINGS AKL

CreativeMornings is a monthly breakfast lecture which is open to the public and regularly hosted by Studio One Toi Tū. Its creative focus is a great way for bringing together like-minded individuals who are seeking inspiration and connections within their community. It started over a decade ago in NYC and there are now over 200 chapters around the world, making CreativeMornings/Auckland part of a global, creative whānau. At the heart of each chapter is a conversation that speaks to the intersection of creativity and the month's theme.

Get your free ticket online, check out the venue, come along for a coffee and end your month with a fresh idea.

WHEN FRI 24 APR
TIME 8 - 9.30AM
THEME PURPOSE

BOOKING ESSENTIAL:
CREATIVEMORNINGS.COM/CITIES/AKL



SCRIBBLEAKL

Get your creativity moving! ScribbleAKL is an open and inclusive creative forum at Studio One Toi Tū. Playing with ideas since 2011, this regular meetup brings together a diverse community of creatives of all levels to discuss and participate in activities that stoke the imagination. Come along to see what others are working on, share ideas, get feedback on your own projects or get hands-on with our unique, collaborative community projects. This term's activities will include a robot battle event and an improv shadow-puppet event.

Follow ScribbleAKL on Facebook for updates.

WHEN MON 6 APR
 7 - 8.30PM
WHEN MON 8 JUN
 7 - 8.30PM
COST FREE
WALK-INS WELCOME

FOR MORE INFORMATION VISIT
FACEBOOK.COM/SCRIBBLEAKL



ARTY PARTY

Are you looking for a fun and unique art experience for a corporate team building day or birthday party?

Studio One Toi Tū can pair you with one of our talented tutors for a special day out with your friends or colleagues. Choose from ceramics, jewellery, painting, embroidery, bone carving or life drawing for the perfect arty party. Contact us for more information including availability and pricing.

CONTACT:
INFO@STUDIOONE.ORG.NZ



PERFORMANCE VENUE

If you are planning a show, event or exhibition get in touch with Studio One Toi Tū. Room 10 is a large, spacious room located on our second floor. It is suitable for pop-up exhibitions, dance performances, music shows, markets or public workshops.

Talk to our team about how this space can be transformed for your next event. Prices are available on a daily or hourly basis.

CONTACT:
INFO@STUDIOONE.ORG.NZ



AUCKLAND FESTIVAL OF PHOTOGRAPHY

GROUP EXHIBITION

THE FEMALE EYE

The Auckland Festival of Photography Trust presents *The Female Eye* from Australia. Do women see differently? This is the question *The Female Eye* poses. These four artists convey the unique perspective that women can bring to documentary photography.

Each artist has created a body of work that is infused with their own visual signature as they explore four very diverse, yet universal themes - loss, longing, love and hope.

ROOM 10

29 MAY - 6 JUN

PHOTOGRAPHYFESTIVAL.ORG.NZ

RAJEEV NEDUMARAN

INTRODUCTION TO MOBILE PHOTOGRAPHY

The tiny cameras on our mobiles have come a long way. The objective of this course is to help participants get the best out of their mobile phone cameras and take pride in their photos. This is a great opportunity to capture moments from your everyday life and take your photos to the next level.

Participants will discuss the limitations of mobile phone cameras, learn compositional techniques, and discover the best tools available. Photographers of all levels are welcome. Please dress warm and be prepared for wet weather as you will be taking photos along Ponsonby Road at night.

WHEN THU 28 MAY
5.30 - 8.30PM

COST FREE

CLASS 12 MAX

BRING YOUR OWN SMART PHONE OR DEVICE
CLICKMOPICS.COM



REBECCA CLAIRE

LIGHT PAINTING PHOTOGRAPHY

Learn about light painting and night photography in this exciting workshop with artist Rebecca Claire. You will begin by learning the basics before heading outside to practice some experimental, creative techniques as you photograph Ponsonby at night.

This workshop also includes an opportunity for participants to showcase their works in a one-night show at Studio One Toi Tū on Thursday 11 June. Photographers of all levels are welcome. Please dress warm and be prepared for wet weather.

WHEN WED 3 JUN
 5.30 - 8.30PM
COST \$40
CLASS 12 MAX
MATERIALS REQUIRED
REBECCACLAIRES.COM.AU

MATARIKI FESTIVAL 2020

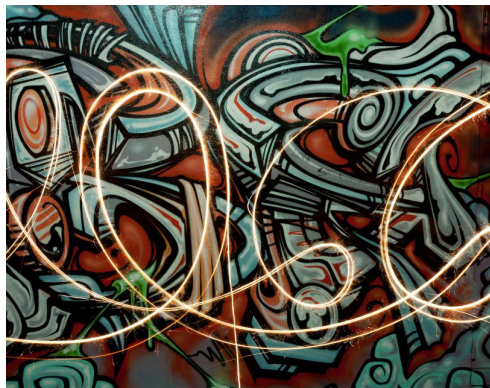
MAHA TOMO

INTRODUCTION TO BONE CARVING

Celebrate Matariki with this free bone carving workshop with Maha Tomo. This tikanga based beginner's workshop will introduce you to various carving and design techniques. Learn how to use files, drills and polishing tools. Create your own mini Marama Moon pendant out of beef bone.

Participants will complete their pendant using traditional lashing and binding techniques found in Māori object art.

WHEN SAT 11 JUL
 10AM - 1PM
COST FREE
CLASS 12 MAX
ALL AGES (CHILDREN UNDER 14 MUST
BE ACCOMPANIED BY AN ADULT)
MATERIALS INCLUDED
ABSCA.NZ



SHOW

EXHIBITIONS



ALEX MCKENZIE

SEA CHANGE

This exhibition showcases pieces made using epoxy resin, acrylic paint and ink overlaid with sand, sea life and rubbish collected from the various beaches across Auckland and Northland. The ocean has played a significant role in McKenzie's life and increasingly she sees the effects of human activity impacting the shores of Aotearoa. The intention of this body of work is to remind us of environmental fragility and to consider new ways to preserve our ecology.

GALLERY 1

2 APR - 30 APR

OPENING:

WED 1 APR, 5PM



ALEX MCKENZIE, 2019

FELIX PRYOR

DEAD MEN DREAM
OF FLOWERS

Felix Pryor presents a series of detailed collage works that question and explore origin myths and eschatology in Western culture. Myths and theology are spliced together in this hand-cut collage work. Inspired by the Baroque period, these works trace an obsession with a past grandeur; depicting angels, warriors, weeping women, moon cycles, eclipses and new life.

GALLERY 2

2 APR - 30 APR

OPENING:

WED 1 APR, 5PM



FELIX PRYOR, 2019

NELE WINKELMANN

A CHANGING
WORLD

A Changing World is a series of digital photographs visualising the extreme effects of climate change for Tāmaki Makaurau. The 12 image series visualises the future of a city sinking below the surface by merging colourful underwater images with well known city sights. Through the use of digital technologies and multi layering *A Changing World* creates surrealistic scenes set all across town and illustrates the importance of climate awareness through intriguing images waiting to be explored.

GALLERY 3

2 APR - 30 APR

OPENING:

WED 1 APR, 5PM



NELE WINKELMANN, 2019

JONI MURPHY

—
UNTAMED
—

Joni Murphy is a full-time professional artist living in New Zealand. Her paintings draw the viewer's attention to endemic and native plant life, found within the area she is working at the time. "My intention is to evoke nostalgic memories of wildflower dells, native bush and forests; the feeling of being within the environment of our untamed Earth. I hope to bring to attention the dependency we have on our botanical life, not only for physical well-being but for our spiritual/emotional well-being too. Painting is an intuitive process, informed by living specimens gathered from my surroundings; it is a process of being present to what comes, discovering new subtleties."

GALLERY 4

2 APR - 30 APR

OPENING:

WED 1 APR, 5PM

GROUP SHOW CURATED
BY PHILIP TSE

—
BLACK IN DEEP RED
—

Art can be an expression of emotion; a record of what the artist is feeling and at the same time, it can bring about emotional reactions in the viewer.

In this group exhibition, artists make choices about colour, line, texture, composition, and concepts to express or evoke feelings.

Artists: Julia Chiu, Lulu Fang, Masano Kawana, Lalita Li, Kingsley and Kim Meredith Melhuish, Fiona Newton, Ong Onlie, Diane Scott, Philip Tse, Selwyn Vercoe, Haihui Wang, Emily Xu, Miyoko McGregor Yamashita, Qiuwang Wang and Shannon Novak.

ROOM 10

2 APR - 16 APR

OPENING:

WED 1 APR, 5PM



JONI MURPHY, 2019



ONG ONLIE, 2019

SUSANNE KHOURI

—
POSTCARDS FROM
MY HEARTBEAT
—

Susanne Khouri is a printmaker. In August last year she had an accident (broken heel) which left her unable to walk during a long period of pain and enforced rest. *Postcards From My Heartbeat* is a visual record about this seemingly endless period in her life and the leap of faith it took to believe she would recover and be able to walk freely again.

SIDEWALK GALLERY
2 APR - 30 APR

OPENING:
WED 1 APR, 5PM

RICHARD JARRETT

—
BOX
—

What motivates a woman to step into the traditionally male domain of a boxing ring to face and fight an opponent? Excitement, passion, anger, focus, elation, calmness, respect, friendship? This exhibition captures the experiences of amateur women boxers competing against each other while spectators share the emotions of the night. These photographs raise questions about the participants and of ourselves.

GALLERIES 1
7 MAY - 4 JUN

OPENING:
WED 6 MAY, 5PM

BYRON COLL

—
SILENT | VOICE
—

This series by photographer Byron Coll is a collection of minimalist landscapes conveying a sense of space and quiet. Focusing on simple characteristics of rural landscapes, the series aims to counteract the intense stimuli of urban environments, filled with noise and distraction. These images offer up a chance for the viewer to take a breath, to let the eyes rest on the seduction of space and let nature silently balance us out.

GALLERIES 2
7 MAY - 4 JUN

OPENING:
WED 6 MAY, 5PM



SUZANNE KHOURI, 2019



RICHARD JARRETT, 2019



BYRON COLL, 2019

GROUP SHOW

PHOCUS ON AUCKLAND

Phocus is a collective of ten photographers living in Auckland who met at a camera club and like to challenge each other. Some were born here, some settled here decades ago, some are new arrivals, all with their own unique connection to this city. This exhibition documents Auckland through a range of subjects, scales and techniques as diverse as the members of the group, including new interpretations of iconic vistas, local detail, city life, action and portraiture.

GALLERIES 3

7 MAY - 4 JUN

OPENING:

WED 6 MAY. 5PM



GROUP SHOW, 2020

TAMMY WILLIAMS

ARCANE

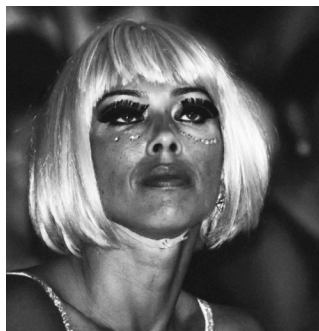
Part of the Auckland Festival of Photography 2020 this photographic series captures idiosyncrasies between public and private worlds. At a world roller-skating championship, both audience members and participants choose to present themselves veiled with costume and make-up. Though disguised as something other than themselves Williams captures her subjects in moments which reveal something that is intimately personal. Arcane reveals a visually striking world full of fascinating contradictions.

GALLERIES 4

7 MAY - 4 JUN

OPENING:

WED 6 MAY. 5PM



TAMMY WILLIAMS, 2019

RAJEEV NEDUMARAN

EYE PHOTOS

The best camera is the camera that you have with you at the time. For Rajeev, that often happens to be his iPhone. When he travelled to India in 2018, he carried his iPhone X and left his DSLR at home. Shooting in this way allowed him to get into places and capture moments that he otherwise would not have been able to photograph. This exhibition is a collection of memories from that trip; all shot and edited on his iPhone X.

SIDEWALK GALLERY

7 MAY - 4 JUN

OPENING:

WED 6 MAY. 5PM



RAJEEV NEDUMARAN, 2019

MATARIKI FESTIVAL 2020

— NGĀ RANGATAHI TOA

— TŪMANAKO

Tūmanako is the story of personal and intergenerational hope through the eyes of South Auckland rangatahi. "We, as navigators, explore, reflect and adapt; always curious - always hopeful." Crafted through wānanga, rangatahi create safe spaces so they can learn from their environment, learn from each other and learn to be brave. "They become leaders - always living in their present to become their future."

GALLERY 4
11 JUN - 9 JUL

OPENING:
WED 10 JUN. 6PM

— MEREANA WARBRICK

— VOWELS | VOWS

Mereana Warbrick explores the idea that certain languages can be interpreted as celestial, contextual and as a visual tongue thinning the veil between past and present when spoken, written and created in art form. For Warbrick, "Te Reo Māori, Hebrew and all indigenous languages connect to Atua (God), Whenua (Land) and Tangata (People). Māori have communicated with Io (God) since the dawn of time." Warbrick's whakapapa and her Christianity form a foundation to her art practice and are an integral part of her mahi.

GALLERY 2
11 JUN - 9 JUL

OPENING:
THU 11 JUN. 5PM



NGĀ RANGATAHI TOA, 2019



MEREANA WARBRICK, 2019

ELLE ANDERSON,
TONI HARTILL &
CELIA WALKER

—
FOUND
—

Found is an examination of nearby places by artists Elle Anderson, Toni Hartill and Celia Walker. They explore mundane landscapes, which are the antithesis of the drama of faraway places. In them, they find both familiar and unfamiliar aspects that are often overlooked but have intrinsic interest. With an emphasis on using found materials, this exhibition encourages resilience and resourcefulness - working with what is available.

GALLERY 3
11 JUN - 9 JUL

OPENING:
THU 11 JUN. 5PM



GROUP SHOW, 2019

LUCIE BLAZE
—
BORN TO CREATE
—

"We were all born to create, but human creation wouldn't be at all possible without women - the creators of us all." The series *Born to Create* is a celebration of women; specifically putting a spotlight on local and international heroines. Blaze presents these amazing women to show communities and youth that one doesn't need to be famous in order to make a difference in the world around you.

GALLERY 1
11 JUN - 9 JUL

OPENING:
THU 11 JUN. 5PM



LUCIE BLAZE, 2019

MAX ROGERS
—
**SUSPENDED
IN TIME**
—

Roger's paintings explore his experiences of what he terms 'a state of flow' which he believes humans experience when people are fully immersed and focused. These paintings seek to represent these moments, which Roger's describes as "beautiful, with a sense of wonder, energy and timelessness." First, he does so by means of deep personal introspection, then through the rapid physical translation of emotional energy into a chaotic frenzy of brushstrokes and colour.

SIDEWALK GALLERY
11 JUN - 9 JUL

OPENING:
THU 11 JUN. 5PM



MAX ROGERS, 2019

MAKE



BETH SERJEANT

—
INTAGLIO PRINT PLUS

Learn intaglio with talented printmaking artist Beth Serjeant, who has worked as an artist in print for over 30 years. Beth has collaborated with many established New Zealand writers in her career and has taught printmaking courses at 1 Ponsonby Road for two decades. In this course, participants will experiment with expressive mark making and explore a range of printing techniques such as woodcut, linocut, etching and intaglio. This course is suitable for students of all skill-levels.

WHEN TUE
 10AM - 12PM
STARTS 12 MAY
LENGTH 6 WEEKS
COST \$240
CLASS 6 MAX
MATERIALS INCLUDED

SYBILLE SCHLUMBOM

—
MOKUHANGA: JAPANESE
WOODBLOCK PRINTING

Learn the basics of Japanese woodblock carving and printing with artist Sybille Schlumbom. Discover how mokuhanga differs from western printing methods, learn what tools are needed and how to use them.

There are endless possibilities for artists and printmakers to incorporate mokuhanga in their existing arts practice. The materials are sustainable and without the need of a printing press, size is only restricted by the size of your paper and imagination.

WHEN SAT
 10.30AM - 2.30PM
STARTS 30 MAY
LENGTH 3 WEEKS
COST \$220
CLASS 10 MAX
MATERIALS INCLUDED



TO BOOK, VISIT STUDIOONE.ORG.NZ

SYBILLE SCHLUMBOM

—
CARVING FOR JAPANESE
WOODBLOCK PRINTING
—

Carving for Japanese woodblock printing
This two-day workshop is suitable for previous students of mokuhanga and printmakers wanting to extend their practice. Over two days we will focus on carving techniques on supplied Japanese shina plywood. There will be a separate print technique workshop in term three.

WHEN SAT 20 & SUN 21 JUN
10AM - 4PM
COST \$210
CLASS 8 MAX
MATERIALS INCLUDED

SYBILLE SCHLUMBOM

—
PRINTING FOR TEACHERS
—

Spend a day going wild with printing and get inspired for the school term! Based on traditional Japanese woodblock printing (no printing press required!), this class is full of inspirations for easy classroom printing. Many existing plates will provide the base for mono printing, stamping, cardboard printing and collage.

Extend your art skill vocabulary with some sustainable print making methods using watercolour, a handheld printing press and a simple registration system.

WHEN SAT 23 MAY
10AM - 4PM
COST \$150
CLASS 12 MAX
MATERIALS INCLUDED



TO BOOK, VISIT STUDIOONE.ORG.NZ

ALVIN XIONG

REALISTIC DRAWING

Hone your skills in traditional drawing techniques and simplify the challenge of capturing a likeness in this stimulating course. Using reference materials supplied by the tutor and a photo of your choice, you will learn methods for starting a drawing and how to build on your work using shading, outline and texture. The tutor will recommend tips for correcting shape and will help make your drawings look true to life.

WHEN MON
9.30AM - 12PM
STARTS 4 MAY
WHEN THU
9.30AM - 12PM
STARTS 7 MAY
LENGTH 8 WEEKS
COST \$240
CLASS 12 MAX

ADDITIONAL MATERIALS LIST WILL BE PROVIDED ON ENROLMENT



ALVIN XIONG

PORTRAIT PAINTING IN OIL

Explore realistic portrait painting while working from a photo of your choosing. Learn oil painting techniques and how to use various brushes. You will begin with underpainting and then move to developing the structure of the head and facial features. The tutor will help with lighting, shading and colour choices. All ability levels are welcome, as the class is structured to provide one on one instruction to each student.

WHEN THU
1 - 3.30PM
STARTS 7 MAY
LENGTH 8 WEEKS
COST \$240
CLASS 10 MAX

ADDITIONAL MATERIALS LIST WILL BE PROVIDED ON ENROLMENT, BRING YOUR OWN PHOTO TO WORK FROM



TO BOOK, VISIT STUDIOONE.ORG.NZ

JARAD BRYANT

EXPRESSIVE LIFE DRAWING
& PAINTING

The human form will inspire you in this fun life drawing course, suitable for all levels of experience. Each week you will develop your artistic abilities and intuitive direction as you work through guided exercises with professional life models and a supportive tutor. Come and explore a range of drawing and painting techniques with references to art history in a relaxed environment while listening to music

WHEN MON*
7 - 9PM
STARTS 4 MAY
LENGTH 9 WEEKS
COST \$230
CLASS 13 MAX

*EXCLUDES QUEENS BIRTHDAY
(MON 1 JUNE)

TERM BOOKINGS WILL RECEIVE A FREE
MATERIALS PACK WITH PAPER AND
DRAWING MATERIALS WITH REGISTRATION



HAN NAE KIM

A-Z CHARCOAL DRAWING

An intensive drawing workshop designed for art enthusiasts of all ages and experience levels. Using charcoal as the main medium you will experiment with a range of drawing processes to explore this medium's limitless possibilities. Through a series of exercises, you will then learn how to introduce other media to the charcoal. Be guided by an experienced tutor from A to Z and discover the beauty of charcoal!

WHEN SAT 27 JUN
10AM - 2PM
COST \$95
CLASS 12 MAX
MATERIALS INCLUDED



TO BOOK, VISIT STUDIOONE.ORG.NZ

HAN NAE KIM

DRAWING ON A LARGE SCALE

Drawing can often be a small, intricate and intimate process. In this class you will embrace drawing on a large scale to push the boundaries of what we consider drawing. You will be experimenting with different methodologies and processes in order to translate your ideas into large-scale works. You will learn how to prepare your chosen working surfaces including canvas, paper, wooden board and found materials, as well as how to apply a range of materials.

WHEN TUE
 7 - 9PM
STARTS 5 MAY
LENGTH 3 WEEKS
COST \$150
CLASS 12 MAX

ADDITIONAL MATERIALS LIST WILL BE PROVIDED ON ENROLMENT.



BETH SERJEANT

FOLDED & SEWN BOOKMAKING

Come and join artist Beth Serjeant as she helps you learn or advance your bookmaking skills. Fold and stitch a series of nine diary-size books and create a handmade case using high-quality papers and paste. The course will cover a range of different book-binding techniques for creating soft flexible books with unique colour, texture and folds.

WHEN SAT 27 & SUN 28 JUN
 10AM - 4PM
COST \$200
CLASS 6 MAX
MATERIALS INCLUDED



TO BOOK, VISIT STUDIOONE.ORG.NZ

DANIEL LARSEN-BARR

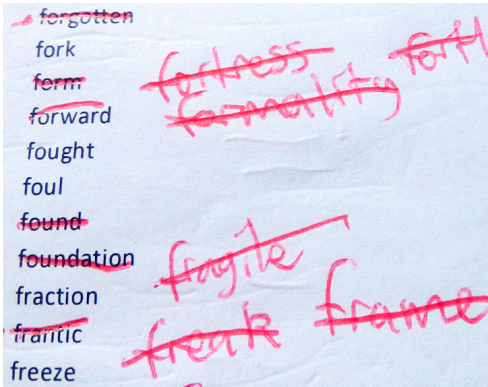
WHY WRITE?

Why Write? is a writing workshop with a focus on poetry, but it is suitable for any kind of writer who is looking for inspiration.

By writing your own short poems each week, you will explore a variety of themes, structures and vocabularies, with sample texts for guidance.

Each participant will receive tailored feedback on their work. *Why Write?* Come along and see.

WHEN FRI
1 - 4PM
STARTS 8 MAY
LENGTH 6 WEEKS
COST \$160
CLASS 10 MAX
MATERIALS INCLUDED



DEBORAH CROWE

PROPOSAL WRITING WORKSHOP FOR ARTISTS

This workshop is interactive with practical exercises and group discussion on different types of proposals, seeking funding and other opportunities.

Approaches to writing a proposal, designing its content and structure, language and budget are covered alongside general tips, including some do's and don't's of proposal writing. Deborah's experience in proposal writing comes from gaining grants, commissions and funding as a practitioner, working as a funding assessor, and in governance roles with institutions and art organisations over the last 20 plus years.

WHEN SAT 13 JUN
9.30AM - 12.30PM
COST \$55
CLASS 14 MAX



TO BOOK, VISIT STUDIOONE.ORG.NZ

GEMMA STEWART

TE REO CROSS STITCH

Learn the basics of cross stitch, one of the simplest forms of embroidery. In this hands-on, four-week course, participants will learn how to prep a hoop and needle, how to read cross stitch patterns, start and complete their own Te Reo cross stitch and finish the stitch ready for framing. Each participant will receive one stitch kit designed by the tutor. Participants will leave this course having learnt a new skill and take home their own artwork to display or gift.

WHEN MON
6 - 8.30PM
STARTS 11 MAY
LENGTH 4 WEEKS
COST \$95
CLASS 20 MAX
MATERIALS INCLUDED



HOLLIE RYAN

POLYMER CLAY
STATEMENT EARRINGS

Discover everything you need to know about creating art for your ears using polymer clay. Techniques covered in this workshop include conditioning clay, marbling, sanding, making earrings from slabs as well as preparing your own moulds and stamps. By the end of the day you will take home several pairs of statement earrings and studs. This workshop is ideal for beginners or as a refresher. Bring your own ideas along, the wilder the better!

WHEN SAT 23 MAY
10AM - 2PM
COST \$120
CLASS 12 MAX
MATERIALS INCLUDED
HARKHANDMADE.COM



TO BOOK, VISIT STUDIOONE.ORG.NZ

WHAU STUDIOS

SILVER RING CASTING

No experience is required to attend this three-part starter jewellery course. The first two sessions will introduce you to specialist jeweller's wax to scrape, file, drill, sand and shape your own unique carved ring. Your design will then be cast in silver – a true 'one off' as once the wax is melted the mould is lost. In the final session you will learn how to finish your casting resulting in a distinct piece of jewellery.

WHEN WED
6.30 - 9PM

STARTS 13 MAY

LENGTH 3 WEEKS

COST \$175

CLASS 8 MAX

INCLUDES JEWELLER'S WAX FOR CARVING,
CASTING PRICE VARIES BETWEEN \$10 - \$60
DEPENDENT ON WEIGHT



HOLLIE RYAN

POLYMER CLAY
FURTHER TECHNIQUES

This is an intermediate workshop for those who have attended our Polymer Clay Statement Earring workshop before, or who have beginner's experience in polymer clay already. These techniques can be used in jewellery making or other polymer clay projects.

The workshop will cover creating skinner blends, an introduction to cane making (focus on petals & leaves) and using metal leaf and other decorative materials to enhance your projects. Please note that students will need to oven bake their projects at home after the class.

WHEN SAT 30 MAY
10AM - 1PM

COST \$100

CLASS 12 MAX

MATERIALS INCLUDED
HARKHANDMADE.COM



TO BOOK, VISIT STUDIOONE.ORG.NZ

KAIRAVA GULLATZ

UNIQUE CLAY VESSELS

This course will cover the design and production of ceramic vessels. Techniques on how to build with clay will be demonstrated, including ways to decorate surfaces with slip colours, carving, embossing and 3D applications. You will become familiar with clay handbuilding as well as throwing vessels on the wheel. Glazing techniques and stacking the kiln are also part of this course. Suitable for beginner and advanced students.

WHEN TUE
 6 - 9PM
STARTS 5 MAY
LENGTH 6 WEEKS
WHEN WED
 6 - 9PM
STARTS 6 MAY
LENGTH 6 WEEKS
COST \$335
CLASS 9 MAX

INCLUDES UP TO 10KG CLAY, GLAZES AND FIRINGS
CERAMICDESIGN.CO.NZ
@KAIRAVACERAMICS



KAIRAVA GULLATZ

CLAY EXPLORATIONS

Is there anything you always wanted to shape in clay? Whether it is functional or sculptural, this is the time to find support for your creative ventures. The class offers the opportunity to experiment with a variety of modelling techniques under the guidance of experienced tutor, Kairava Gullatz. Students will discover their individual way of handling the material, as well as enjoy sharing time to be creative with fellow students. Surface decorations with slips and glazes are part of the teaching.

WHEN THU
 10AM - 1PM
STARTS 7 MAY
LENGTH 6 WEEKS
COST \$335
CLASS 9 MAX
INCLUDES UP TO 10KG CLAY, GLAZES AND FIRINGS
CERAMICDESIGN.CO.NZ
@KAIRAVACERAMICS



TO BOOK, VISIT STUDIOONE.ORG.NZ

ADULT 252

KAIRAVA GULLATZ

— THROWING YOUR FUTURE CROCKERY

—
Experience throwing your own pots for daily use. We will also explore a variety of handbuilding techniques for creating unique shapes of all kinds. There will be demonstrations covering a variety of techniques to decorate the surface of the vessels using carving, applications and colourful slips. All vessels will be fired and glazed for you.

WHEN SAT 30 & SUN 31 MAY
10AM - 3PM

COST \$290

CLASS 9 MAX

INCLUDES UP TO 10KG CLAY, GLAZES AND FIRINGS

CERAMICDESIGN.CO.NZ

@KAIRAVACERAMICS

ADULT 212

VAL ONG

— THROW IT DOWN

—
An intensive eight-week ceramics course for those wanting to learn the basics of contemporary clay making on the wheel. This introductory course is ideal for students wanting to learn how to throw a variety of domestic shapes including cups, bowls and cylinders. This relaxed course is suitable for anyone who would like to give ceramics a go and enjoy some good banter!

WHEN THU
6.30 - 9PM

STARTS 14 MAY

LENGTH 8 WEEKS

COST \$360

CLASS 8 MAX

INCLUDES UP TO 10KG CLAY, GLAZES AND FIRINGS



TO BOOK, VISIT STUDIOONE.ORG.NZ

VAL ONG

DROP IN CERAMICS STUDIO

Need some time to work on a project? Want some technical advice on your process? On Fridays you can now work independently in our fully equipped ceramics studio. This weekly, drop-in session is ideal for practitioners requiring studio space to work on their own projects or practice. Our technician, Val Ong will be available to provide basic technical advice.

Please sign in at reception, prior to 5pm.

WHEN FRI
*EXCLUDING SCHOOL HOLIDAYS
STARTS 1 MAY
11AM - 7PM
COST \$5 PER HOUR
CONCESSION CARDS ARE AVAILABLE
BRING YOUR OWN TOOLS, MATERIALS, AND
PROJECTS TO WORK ON.

HAN NAE KIM

KINTSUGI: THE ART OF
BROKEN PIECES

Do you have damaged pieces of art made with wood, metal or ceramics? Embrace the markings of broken objects, transform them with lacquer and decorated them with gold and silver leaf. Lacquer is one of the oldest natural materials used in East Asian countries to repair damaged objects. Amend and adorn your fractured pieces and realise their newly restored glory.

WHEN WED
7 - 9PM
STARTS 3 JUN
LENGTH 2 WEEKS
COST \$145
CLASS 10 MAX
BRING YOUR OWN DAMAGED OBJECTS, ALL
OTHER MATERIALS INCLUDED



TO BOOK, VISIT STUDIOONE.ORG.NZ

ANTOINETTE RATCLIFFE

—
INTRODUCTION TO
TAXIDERMY: SMALL
CREATURES AND BIRDS
—

Ever wanted to learn how to do taxidermy? Antoinette is a practicing artist who incorporates taxidermy into her artworks. She will demonstrate the basics of small animal taxidermy and help you create your first piece.

Together you will discuss the ethics involved with taxidermy, as well as what to expect during the process including health and safety elements and mounting considerations.

You will need to supply your own specimen for the class.

WHEN SAT 20 JUN
 9AM - 5PM
COST \$235
CLASS 8 MAX
MATERIALS INCLUDED



REBECCA CLAIRE

—
DIGITAL PHOTOGRAPHY
MANUAL SETTINGS
—

Learn the basics, increase your confidence and get creative in this one-day workshop taught by a photographer with over 10 years' experience. Discover manual camera controls such as shutter speed, aperture, exposure, ISO and white balance. Learn about different lenses, composition principles and participate in a fun group photoshoot!

This workshop is suitable for those wanting to try a DSLR before they invest or learn how to operate their own camera.

WHEN SAT 6 JUN
 12 - 4PM
COST \$85
CLASS 10 MAX
BRING YOUR OWN CAMERA (CONTACT US IF
YOU WOULD LIKE TO BORROW ONE)

WWW.REBECCACLAIRES.COM.AU



TO BOOK, VISIT STUDIOONE.ORG.NZ



TANJA NOLA

TEEN CERAMICS SESSION

In a specialized sculpture studio, this workshop will introduce young artists to the inventive possibilities of the ceramic medium. Participants will learn handbuilding techniques, 3D making skills and discover the decorative possibilities of colour, pattern and texture. This workshop will also look at the history of ceramic art and connect these ideas with students' personal interests. Taught in a relaxed environment and guided by experienced tutor and artist Tanja Nola, participants will enjoy sharing their creative experience with like-minded artists. Suitable for students of all experience levels.

AGE 13 TO 18
WHEN SAT 9 MAY
12 - 6PM

COST \$95
CLASS 8 MAX

MATERIALS AND FIRINGS INLCUED
AFTERNOON SNACK PROVIDED



KAIRAVA GULLATZ

ANIMAL ACROBATS

Time to get your hands covered in clay as you shape your favourite animals performing acrobatic tricks! In this fun after-school class students will enjoy getting creative and explore a variety of pottery and sculpting techniques. The supportive tutor will help students realise their unique designs through clay and colourful slips.

AGE 6 TO 12
WHEN WED
4 - 5.30PM

STARTS 6 MAY
LENGTH 6 WEEKS
COST \$185
CLASS 12 MAX

MATERIALS AND FIRINGS INCLUDED



TO BOOK, VISIT STUDIOONE.ORG.NZ

EKARASA DOBLANOVIC

EXPLORING ECO ART

Explore the sustainable world of eco art by making artworks and eco-prints using natural and recycled materials. You will learn how to make your own paints and art materials out of earth pigments and paint with them. You will explore how to creatively use eco materials and different techniques such as drawing, painting and printing.

AGE 7 TO 14
WHEN WED
4 - 5.30PM
STARTS 20 MAY
LENGTH 6 WEEKS
COST \$185
CLASS 12 MAX
MATERIALS INCLUDED

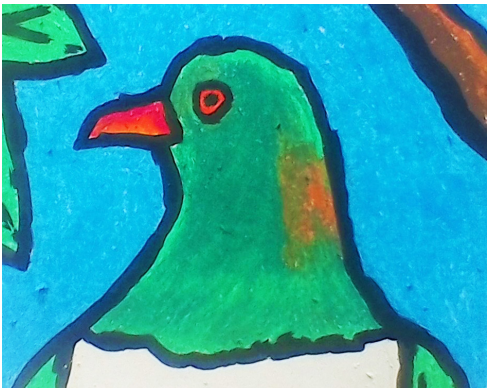


THOMAS GEDDES

BIRDS OF AOTEAROA

Explore the beautiful birds of Aotearoa. Taking inspiration from the pastel and gouache art works of New Zealand artist Melanie Eade, each student will create pastel art works depicting their favourite native birds, finishing with a gouache wash to fill in the outlines and make the bold colours truly pop! Students will learn to draw complex images by breaking them down into simple shapes, as well as exploring line, mark making, shading, and colour theory.

AGE 7 TO 14
WHEN TUE
4 - 5.30PM
STARTS 19 MAY
LENGTH 7 WEEKS
COST \$185
CLASS 10 MAX
MATERIALS INCLUDED



TO BOOK, VISIT STUDIOONE.ORG.NZ



KAIRAVA GULLATZ

—
LAUGHING OUT LOUD

Come along to make a clay sculpture that will make you laugh! Students will get creative and explore a variety of pottery techniques that will help bring your unique designs to life. All figures will be decorated with colourful slips. A pottery wheel will also be available to enjoy throwing small pots.

AGE 5 TO 12

WHEN TUE 14 & WED 15 APR
10AM - 2PM

COST \$130

CLASS 12 MAX

MATERIALS AND FIRINGS INCLUDED

DRESS FOR MESS AND PACK A LUNCH AND
A DRINK BOTTLE

LEELA BHAI

—
RAT LOVE

Oreo the Rat will be our star model! With a strong start in observational drawing, your child will experiment with a wide variety of mark making materials including pencil, charcoal, Indian ink and pastels, aiming to capture the detail, movement and character of Oreo. We will then move into larger scale paintings or sculpture, allowing each child to dictate the direction their observational studies will take them. This course is not suitable for children allergic or scared of rodents.

AGE 6 TO 12

WHEN THU 16 APR
10AM - 2PM

COST \$50

CLASS 12 MAX

MATERIALS INCLUDED

DRESS FOR MESS AND PACK A LUNCH AND
A DRINK BOTTLETO BOOK, VISIT STUDIOONE.ORG.NZ

KAIRAVA GULLATZ

—
BEACH PARTY
—

Create a unique and fully functional dinner plate featuring your individual design of a party by the ocean. We will explore a variety of clay sculpting techniques and you can also enjoy throwing a small vessel using a pottery wheel.

AGE 6 TO 14

WHEN THU 16 &
FRI 17 APR
10AM - 2PM

COST \$130

CLASS 12 MAX

MATERIALS INCLUDED

DRESS FOR MESS AND PACK A LUNCH AND
A DRINK BOTTLE



LEELA BHAI

—
FINE ORCHID PAINTING
—

We will closely study the shapes, patterns and colours of real orchid plants, using a variety of drawing tools to understand these details. We will then create small masterpieces with layered paint and texture which will represent the day's close analysis of these incredible flowers.

AGE 8 TO 14

WHEN TUE 21 APR
10AM - 2PM

COST \$50

CLASS 12 MAX

MATERIALS INCLUDED

DRESS FOR MESS AND PACK A LUNCH AND
A DRINK BOTTLE



TO BOOK, VISIT STUDIOONE.ORG.NZ

SYBILLE
SCHLUMBOM

MOKUHANGA FOR
MANGA ARTISTS

Mokuhanga (traditional Japanese woodblock printing) is the origin of manga. Based on your own characters, you will learn to carve and print a one coloured block with traditional tools on Japanese plywood. This is a challenging class that requires some patience but gives you the tools to extend your drawing skills into printmaking.

AGE 14+
WHEN MON 20 &
TUE 21 APR
10AM - 2PM
COST \$160
CLASS 10 MAX
MATERIALS INCLUDED
DRESS FOR MESS AND PACK
A LUNCH AND A DRINK
BOTTLE



EKARASA
DOBLANOVIC

FANTASTIC GARDEN

This workshop takes inspiration from various plants and insects in the garden and turns the sculptural objects into a fantastic garden. Leaves, sticks, paper clay (air dry clay), wood and other organic matter can be used to construct your sculptures. In the following session students will paint their objects in the colours of your choice.

AGE 6 TO 12
WHEN WED 22 &
THU 23 APR
10AM - 2PM
COST \$140
CLASS 10 MAX
MATERIALS INCLUDED
DRESS FOR MESS AND PACK
A LUNCH AND A DRINK
BOTTLE



EKARASA
DOBLANOVIC

ONE LINE
PORTRAITS

Have fun with single line portrait drawing, without lifting your hand from the paper! This is a fun activity where you discover that art is not about perfection, it is about being fun, expressive and creating unique, one of a kind artworks. After drawing, the portraits are then painted on paper. Participants will learn drawing and painting skills while having fun.

AGE 6 TO 12
WHEN FRI 24 APR
10AM - 2PM
COST \$75
CLASS 12 MAX
MATERIALS INCLUDED
DRESS FOR MESS AND PACK
A LUNCH AND A DRINK
BOTTLE



TO BOOK, VISIT STUDIOONE.ORG.NZ

REBECCA CLAIRE
—
DIGITAL PHOTOGRAPHY
FOR KIDS
—

This interactive workshop shares basic camera techniques and applications in a fun and creative way. During the workshop students will get hands-on through mindfully placing and photographing subjects in natural light, to develop framing, pattern, and composition principles. The students will then work together to set-up a themed photo shoot.

AGE 6 TO 11
WHEN MON 13 JUL
10AM - 2PM
COST \$50
CLASS 12 MAX

BRING YOUR OWN CAMERA, CAMERAS
AVAILABLE FOR LOAN IF NEEDED



THOMAS GEDDES
—
NEW ZEALAND DREAMSCAPES
—

Students will create a large mixed media artwork of a fantastic, imagined New Zealand landscape. Participants will experiment with a variety of media including pencils, crayons, pastels, paint, and collage to create their colourful landscapes filled with both native and imaginary plants and animals.

AGE 6 TO 11
WHEN TUE 7 & WED 8 JULY
10AM - 2PM
COST \$95
CLASS 12 MAX
MATERIALS INCLUDED
DRESS FOR MESS AND PACK A LUNCH AND
A DRINK BOTTLE



TO BOOK, VISIT STUDIOONE.ORG.NZ

EKARASA
DOBLANOVIC

—
ECO PLANT
BANNER
—

In this two-day workshop we will use gathered natural materials such as wild plants, leaves and flowers to be printed on a paper and textile banner. This workshop will bring a deep appreciation for the beauty of the natural world. Focusing on plants, their structures and colours. By the end of the workshop participants will have created a beautiful banner ready to be hung.

AGE 6 TO 12
WHEN WED 15 &
THU 16 JUL
10AM - 2PM
COST \$140
CLASS 12 MAX
MATERIALS INCLUDED
DRESS FOR MESS AND PACK
A LUNCH AND A DRINK
BOTTLE



KAIRAVA GULLATZ
—
BLUE WHALE
DESSERT BOWLS
—

In this workshop we will make our own special dessert bowls from soft white clay. The vessels can be adorned with 3D applications, carvings and colourful decorations. During these two days students will learn how to realise their creative ideas in clay using handbuilding techniques and throw a small vessel on the pottery wheel. The tutor will glaze and fire everything making them ready to use.

AGE 6 TO 12
WHEN MON 6 &
TUE 7 JUL
10AM - 2PM
COST \$130
CLASS 12 MAX
MATERIALS AND FIRINGS INCLUDED
DRESS FOR MESS AND PACK
A LUNCH AND A DRINK
BOTTLE



KAIRAVA GULLATZ
—
HATS ON HEADS
—

Students will make clay character busts during this two-day class for junior ceramicists. Students will learn about sculpting techniques and ways to decorate their busts with clay colours. There will also be time for you to use a pottery wheel to throw a small vessel.

AGE 6 TO 12
WHEN WED 8 &
THU 9 JUL
10AM - 2PM
COST \$130
CLASS 12 MAX
MATERIALS AND FIRINGS INCLUDED
DRESS FOR MESS AND PACK
A LUNCH AND A DRINK
BOTTLE



BOOKING INFORMATION

COURSE BOOKINGS

To enrol in one of our courses, contact Studio One Toi Tū and quote the course number. To secure your booking, payment must be paid in full prior to the course start date. Payments can be made by phone or in person at 1 Ponsonby Road. We accept payment by cash, EFTPOS, credit card and cheque.

REFUNDS

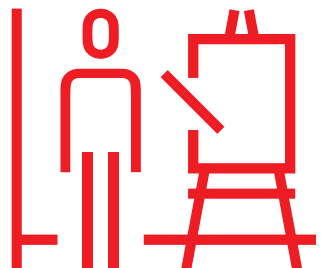
If you cancel your enrolment, you must let us know at least three working days before the class starts to receive a refund. A \$20 cancellation fee will be incurred. Payments will be refunded in full if Studio One Toi Tū cancels the course. Refunds take approximately 10 working days to process.

YOUTH COURSES

Please sign your children in and out of their course at our main reception area. Wear clothes that are ready to get messy. Bring a water bottle, snacks and lunch for all day classes.

CERAMICS COURSES

Finished pottery from classes will be available to pick up from Studio One Toi Tū approximately four weeks after the class finishes. Please understand even with the most careful handling, in some cases work may break when kiln-fired.



HIRE

VENUE HIRE

Studio One Toi Tū has a range of adaptable outdoor and indoor spaces to meet your needs and bring your idea to life. Come in to view our spaces for hire, we will happily show you around and discuss how we can support your event or practice.

MEETING AND EVENT SPACE

Whether you're a designer looking for a space to show your latest collection, an artist looking for an exhibition space or a book club seeking a central meeting place - we have the space for you. To find out how we can support you, visit 1 Ponsonby Road, or call us on 09 376 3221.

HIRE RATES

We have a range of room hire options available at an hourly rate*. To view our rates or to book a room please visit booking.aucklandcouncil.govt.nz/facilities

* A community rates discount is available by application

SPACES FOR HIRE

ROOM 5

A versatile meeting, workshop and function room with heating and air conditioning. Capacity: 50 people.

ROOM 6

A sunny versatile meeting, workshop and function room with views onto the rear deck. Capacity: 25 people.

ROOM 10

A large clean studio space used for conferences, seminars, workshops, pop-up exhibitions, film screenings and more. The space can be booked hourly or weekly. Capacity: 100 people.

ROOM 11

A dedicated art workshop to accommodate visual art practices or creative workshops. Fitted with a printing press, tables, chairs, easles, lighting track and a spotlight. This space can be booked hourly, daily, or half-daily. Capacity: 30 people.

ROOM 12

Dedicated art workshop set up to accommodate sculpture practices. Fitted with pottery wheels. This space can be booked hourly, daily, or half-daily. Capacity: 20 people.

STUDIO ONE — TOI TŪ

OPENING HOURS

All spaces

Mon – Thu	9am – 7pm
Fri	9am – 5pm
Sat	9am – 4pm

Residents

24/7 access

ACCESS

All rooms and galleries
are wheelchair accessible.

LOCATION

1 Ponsonby Road
Auckland, New Zealand

CONTACT

09 376 3221
info@studioone.org.nz
studioone.org.nz

facebook.com/studioonetoiu
instagram.com/StudioOne.ToiTu

#VisitCreateMake
#HirePlayShow
#StudioOneToiTu