

STUDIO
ONE
—
TOI TŪ

WHAT'S ON
—
AUG - OCT 2019

PROGRAMME

3



KIA ORA AND WELCOME
TO STUDIO ONE TOI TŪ.

OUR UNIQUE LINE UP OF
FUN EVENTS INCLUDE
EXHIBITIONS, CREATIVE
CONVERSATIONS, COURSES
AND PERFORMANCES. WE
ALSO PROVIDE GALLERY,
STUDIO AND VENUE HIRE.

JOIN OUR CREATIVE
COMMUNITY AND VISIT,
CREATE, MAKE AT STUDIO
ONE TOI TŪ THIS WINTER.

FIND OUT MORE

The creative precinct at Studio One Toi Tū is a hub for making. At the intersection of arts and community, it is a place to meet, exchange, grow, learn and join a neighbourhood of creative activity at 1 Ponsonby Road.

If you would like to receive details of upcoming events and programmes, like our Facebook page, follow us on Instagram, visit our website or email us to subscribe to our newsletter.

09 376 3221
info@studioone.org.nz
studioone.org.nz

facebook.com/studioonetoitu
instagram.com/StudioOne.ToiTu

#VisitCreateMake
#HirePlayShow
#StudioOneToiTu

LOCATION

—
1 Ponsonby Road
Auckland, New Zealand



CONTENTS

OPEN	P.8 - 13
SHOW	P.14 - 21
MAKE	P.22 - 40
—	
ADULTS	P.24 - 33
—	
PHOTOGRAPHY	P.13 & 24
CREATIVE WRITING	P.24
DRAWING & PAINTING	P.25 - 27
PRINTMAKING	P.28
JEWELLERY MAKING	P.29
CARVING	P.30
TAXIDERMY	P.30
EMBROIDERY	P.31
DANCE	P.31
CERAMICS	P.32 - 33
—	
KIDS & TEENS	P.34 - 36
SCHOOL HOLIDAYS	P.37 - 40
—	
WINTER	P.38 - 39
SPRING	P.39 - 40
—	
HIRE	P.42 - 43

HIRE, PLAY, SHOW



VISIT, CREATE, MAKE

With opportunities for individuals and community groups through to experienced professionals, we offer a range of studio spaces for hire, offering you a place to workshop an idea, learn a new technique or sharpen your skills.

Become a part of the creative community at Studio One Toi Tū by becoming a tutor, applying to be a part of our exhibition and events programme or becoming one of our Creative Studio Residents. More details on page 6.

CALL FOR RESIDENCY

Our Creative Studio Residency programme is open to applicants once a year. We select between two to five project proposals annually. Successful applicants will be supported by Studio One Toi Tū resources, networks and mentoring. The Residency concludes with an achievable exhibition or event to be delivered at Studio One Toi Tū.

Previous residents have included Dance Plant Collective, Cait Johnson, Toni Gill, Jack Tilson, Stjohn Milgrew, Teresa Peters, DA-KU Set, Katie Burson and Sophie Watson.

Our next call for our Creative Studio Residents for Residency in 2019 – 2020 will open on 1 September 2019, and close on 29 September.

CALL FOR TUTORS

Studio One Toi Tū has a biannual call for tutors to share their ideas and skills with our community. We welcome innovative and engaging course and workshop proposals from all creative disciplines, ranging from ceramics and drawing to taxidermy and weaving. Successful tutors are supported through resources available at Studio One Toi Tū, including the use of fit for purpose studio and workshop rooms.

Our next call for tutors will be for our 2020 programme. Applications will open in January 2020.

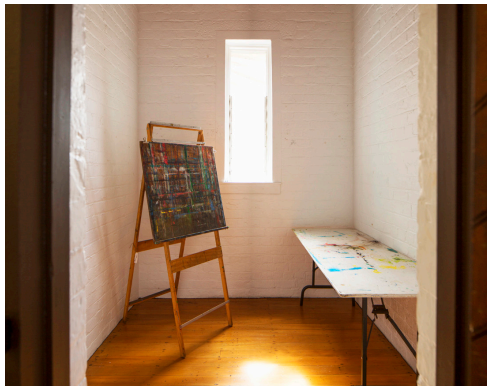
To find out about our current tutors visit: www.studioone.org.nz/people/



STUDIO SPACES

A range of studio hire options are available at the Studio One Toi Tū precinct. Studio One Toi Tū is a hub for creatives and community activities, where designers, writers, artists, performers, musicians and other creative people can make and collaborate. We have a range of studio options and are one of the few precincts in Auckland to offer access to a 'dirty' workshop suitable for ceramicists, sculptors and object makers. We also offer a number of open studio spaces that can be hired individually or collectively for making, meetings, workshops or temporary events.

We are located in the heart of central Auckland with free wi-fi, kitchen facilities and the possibility for 24-hour access. Contact us to find out how we can support you.



THE CELL BLOCK

The Cell Block studio spaces are private studios available for hire at a rate of \$78 per week. It comes with 24-hour access and is hired on a monthly basis.

VILLA STUDIO

A shared studio space with access to the sculpture workshop and prep room is available for hire at a rate of \$175 per week. It comes with 24-hour access and is hired on a monthly basis.

WORKSHOP HIRE

Studio One Toi Tū has two 'messy' workshops that can be hired at an hourly rate with access to our ceramic and printmaking equipment. If you have a project and need that extra space to make it happen, this is the option for you.

Contact Studio One Toi Tū to find out more information and check the availability of our studios, gallery and spaces for hire.



OPEN



CREATIVE TALKS, POP-UPS AND DROP-INS



MAKE IT HAPPEN HERE

From creative conversations to pop-up exhibitions, there's always something happening at 1 Ponsonby Road. If you require a studio for a project or workshop, would like to showcase your work or are in need of a venue to host a special event, contact us to discuss the opportunities available for you at Studio One Toi Tū.

CREATIVEMORNINGS AKL

CreativeMornings is a monthly breakfast lecture which is open to the public and regularly hosted by Studio One Toi Tū. Its creative focus is a great way for bringing together like-minded individuals, who are seeking inspiration and connections within their community. It started over a decade ago in NYC and there are now over 200 chapters around the world, making CreativeMornings/Auckland part of a global creative whānau. At the heart of each chapter is a conversation that speaks to the intersection of creativity and the month's theme.

Get your free ticket online, check out the venue, come along for a coffee and end your month with a fresh idea.

BOOKING ESSENTIAL:
CREATIVEMORNINGS.COM/CITIES/AKL

WHEN 26 JUL
TIME 8 - 9.30AM
THEME END

SCRIBBLEAKL

Get your creativity moving! ScribbleAKL is an open and inclusive creative forum at Studio One Toi Tū. Playing with ideas since 2011, this fortnightly meetup brings together a diverse community of creatives of all levels to discuss and participate in activities that stoke the imagination. Come along to see what others are working on, share ideas, get feedback on your own projects or get hands-on with our unique, collaborative, community projects. Past examples include interactive sculptures, mini-golf courses and more.

Follow ScribbleAKL on Facebook for updates on special events and community projects.

WHEN EVERY SECOND MON
7 - 9PM
COST FREE
WALK-INS WELCOME

FOR MORE INFORMATION VISIT
FACEBOOK.COM/SCRIBBLEAKL



SIDEWALK GALLERY

The Sidewalk Gallery is a dedicated window exhibition space at Studio One Toi Tū. Visible from Ponsonby Road, the snug window space can accommodate a diverse range of visual art practices including video, photography, sculpture and site-specific installations.

Proposals are accepted on an ongoing basis, and there is no fee to exhibit in this space.

CONTACT:
INFO@STUDIOONE.ORG.NZ

ARTY PARTY

Are you looking for a fun and unique art experience for a corporate team building day or an upcoming birthday party? Studio One Toi Tū can pair you with the right tutor for a special day out with your friends or colleagues. Choose from ceramics, jewellery, painting, embroidery, bone carving or life drawing for the perfect arty party. Contact us for more information.

CONTACT:
INFO@STUDIOONE.ORG.NZ

VENUE HIRE

If you are planning a show, event or exhibition and are currently looking for a venue to hire, get in touch with Studio One Toi Tū. Room 10 is a large, spacious room located on our second floor. It is suitable for pop-up exhibitions, dance performances, music shows, markets or public workshops. Talk to our team about how this space can be transformed into a professional exhibition space, or an intimate venue for your next event. Prices are available on a daily or hourly basis.

CONTACT:
INFO@STUDIOONE.ORG.NZ



CALL FOR EXHIBITION PROPOSALS

—
Studio One Toi Tū welcomes innovative approaches to creative practice and offers opportunities for you to be a part of our exciting and diverse exhibition programme. Our four ground floor galleries can accommodate various visual arts practices and are available for hire through an annual call for proposals. Our call for proposals for exhibitions in 2020 is currently open and closes at midnight on Sunday 30 June.

Proposals can be submitted through an online application process. For more information visit our Facebook page.

CONTACT:
INFO@STUDIOONE.ORG.NZ

MĀPURA STUDIOS

ART: A COMMUNICATIVE TECHNOLOGY

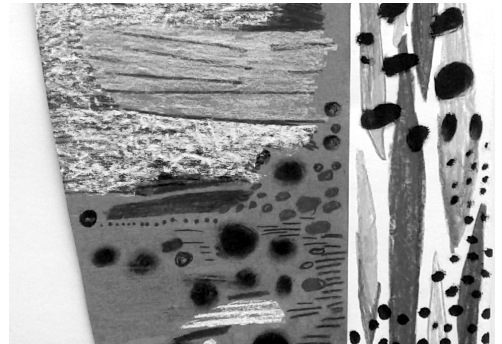
—
Join this panel of experts in their field, to discuss ideas around communication and communicative technologies. Communication is critical to our practice and research at Māpura Studios. The artists use a broad range of media to share their ideas.

We are asking questions such as: how contingent is information on its medium? What effect does technology have on how we relate to each other and information?

The panellists are Senior Lecturer in Computer Science at Auckland University, Dr. Danielle Lottridge; Painter, Jacqueline Fahey; Games Designer, Eric-Rangi Hillman; Auckland Prison Assistant Director, Simon Chaplin and Dr. Morrigan Mullen, University of Auckland with MC John Glass.

WHEN THU 20 JUN
6 - 8PM

WWW.MAPURASTUDIOS.ORG.NZ



PART OF AUCKLAND FESTIVAL OF PHOTOGRAPHY

EXHIBITIONS

During the 2019 Auckland Festival of Photography, Studio One Toi Tū are hosting a free photography workshop and several exhibitions.

As a part of the Festival's Fissure theme, Shahidul Alam's *Embracing The Other*, is a projection about an exhibition designed to counter Islamophobia and extremism.

WHEN 1 - 8 JUN

Digital Screens Initiative presents Bobbie Gray's *Digital Garden* and Nat Van Halle's *Nature*, exhibitions focused on the natural world.

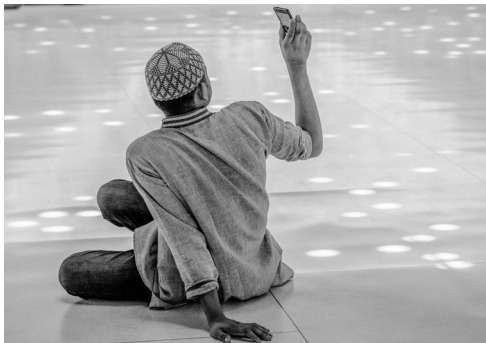
WHEN 10 - 16 JUN

Satellite programme sees the Cell Block Studios taken over with *Off Limits*, a group show featuring work by Brendan Kitto, Faye Norman, Stjohn Milgrew and Vanessa Green.

WHEN 5 - 28 JUN

COST FREE

WWW.PHOTOGRAPHYFESTIVAL.ORG.NZ



WORKSHOP

REBECCA CLAIRE

LIGHT PAINTING PHOTOGRAPHY

Learn about light painting and night photography in this exciting workshop with artist Rebecca Claire. You will begin by learning about night photography before heading outside to practice some experimental, creative techniques as we photograph Ponsonby at night.

This workshop also includes a viewing of on-site exhibitions as part of Auckland Festival of Photography. Photographers of all levels are welcome. Please dress warm and be prepared for wet weather.

AGE 14 +

WHEN TUE 11 JUN

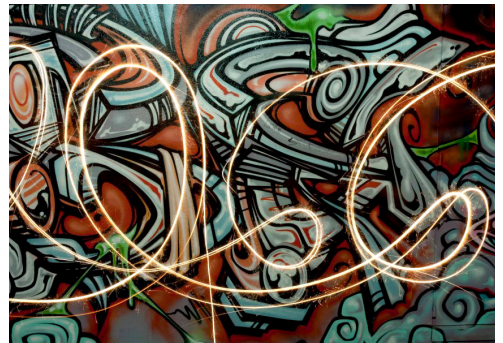
5.30 - 8.30PM

COST FREE

CLASS 12 MAX

ADDITIONAL MATERIALS LIST WILL BE PROVIDED ON ENROLMENT

WWW.REBECCACLAIRE.COM.AU



SHOW



EXHIBITIONS



MĀPURA STUDIOS

PRESS ANY KEY*

*Press Any Key** is an exhibition of new works made collaboratively by artists in the Māpura Studio programme. The artists utilise a range of digital technologies alongside more traditional mediums to construct an immersive group installation. The works showcase the artists' unique creative personalities and also reflect their experiences living with disability.

GALLERY 1, 2 & SIDEWALK
GALLERY
6 JUN - 4 JUL

OPENING:
WED 5 JUN, 5PM



SIAN THOMAS, 2018

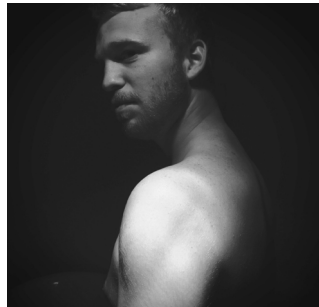
PAUL CHAPMAN

BARE

Paul Chapman presents *Bare*, a new series of body focused portraits that explores the traditions of photographic portraiture with his subject, Ryan. Through the physical act of being photographed, Ryan is confronted with his relationship to his body and the representation of 'self' in image form. The trust of friendship is pivotal in these photographs, where intimate moments of confidence and vulnerability are captured. The chiaroscuro lighting echoes feelings of self-doubt and assurance. A literal representation of a mood with light and dark and the spaces we can occupy between them.

GALLERY 3
6 JUN - 4 JUL

OPENING:
WED 5 JUN, 5PM



PAUL CHAPMAN, 2018

CÉLINE SAYÉ

VISAGES MULTIPLES

Céline Sayé is interested in the psychology of self-expression in contemporary photography. *Visages Multiples* is a multimedia work that includes photographic prints and a sound recording. It explores Sayé's experience of grief after the loss of her father, her re-connection to small, beautiful moments in life, and her father's poetry. The imagery reflects the mysterious phenomenon that is life and alludes to its ongoing flux between complexity and simplicity, darkness and enjoyment, fear and serenity.

GALLERY 4
6 JUN - 4 JUL

OPENING:
WED 5 JUN, 5PM

PART OF AUCKLAND
FESTIVAL OF PHOTOGRAPHY



CÉLINÉ SAYÉ, 2015

NGĀ RANGATAHI
TOA

NAVIGATORS

Ngā Rangatahi Toa collective support creative youth development with a focus on strengthening their connections to self, whānau, peers, community and wider society. Through wānanga, their students find their safe space in the world where they can learn, grow and explore their creativity, enabling them to be brave and become leaders - *Navigators*.

Ngā Rangatahi Toa's exhibition takes the viewer on a journey through these artists' personal stories and experiences.

GALLERY 1 & 4
11 JUL - 8 AUG

OPENING:
WED 10 JUL, 6PM



NRT, 2018

DAWN NGAAMO

AU

Au is an exploration of self-identity and belonging. Ngaamo's portraits feature rich layers of repeating patterns, which reflect her mixed ethnicity and conflicting values. Another influence evident in Ngaamo's works is her own personal growth in Te Ao Māori and reconnection with her iwi.

GALLERY 2 &
SIDEWALK GALLERY
11 JUL - 8 AUG

OPENING:
THU 11 JUL, 5PM



DAWN NGAAMO, 2018

MICHELLE MAYN

OF JOURNEYS
BETWEEN TWO
PLACES

Of Journeys Between Two Places is a series of delicate, mnemonic works made during travels between the Hokianga, Aotearoa (New Zealand) and Manahatta (Manhattan, New York). Mayn has combined harakeke (flax) fibers with found materials using weaving, binding and knotting techniques that stem from Māori traditions. Mayn assembles the elements together in a final installation to explore space and scale, while highlighting the beauty of the materials.

GALLERY 3
11 JUL - 8 AUG

OPENING:
THU 11 JUL, 5PM



MICHELLE MAYN, 2018

STUDIO ONE TOI TŪ: CREATIVE RESIDENTS EXHIBITION

—
KATIE BURSON

—
I WISH THE LIFEGUARD WAS DEAD (SO I COULD BREAK THE RULES)
—

Katie Burson presents a collection of projects, unified by a common inquiry into human connection, rules of engagement, and the search for level playing fields in the face of uncertain futures.

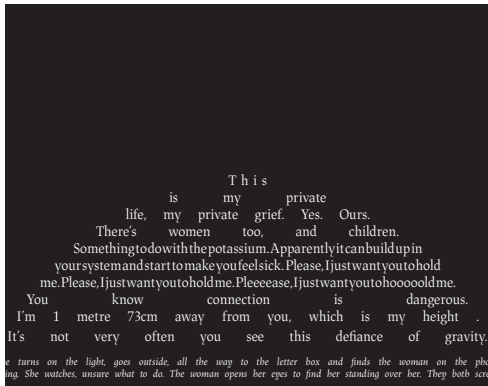
Burson collaborates with various theatre practitioners; utilising storytelling, video art and movement to create off-beat alternate realities. These charming worlds prompt viewers to question how humans attempt to connect and cope with their surrounding environments.

GALLERY 1

15 AUG - 19 SEP

OPENING:

WED 14 AUG, 5PM



KATIE BURSON & BETH KAYES, 2019

SOPHIE WATSON

—
UNEARTHED
—

Studio One Toi Tū resident Sophie Watson shares her personal investigation into her grandfather Walter's disappearance in 1951, and the discovery of his remains in 1963. Watson has conducted archival and interview-based research into accounts and speculations about what happened. Her findings have become the basis for a comic/graphic novel and *Unearthed* also features her process of crafting a narrative work from her research.

GALLERY 2

15 AUG - 19 SEP

OPENING:

WED 14 AUG, 5PM



SOPHIE WATSON, 2018

TERESA PETERS

ECHO BONE

ECHO BONE showcases contemporary ceramics and sculptural works by Teresa Peters. Peters uses the term 'echo', which relates both to the natural phenomenon and the Greek myth it inspired, to explore the connection between the natural world and the constructs humans build within it. Her works take on the status of totems to question values in the Anthropocene age where tension is rapidly increasing between human activity and the environment.

GALLERY 3

15 AUG - 19 SEP

OPENING:

WED 14 AUG, 5PM



TERESA PETERS, 2019

DA-KU SET

NOSTALGIA_ULTRA

Past and present worlds collide in *Nostalgia_Ultra* the debut exhibition by DA-KU Set, which is also a homage to Māori and Pacific peoples, and on a personal note – their Dads. Illustrations rendered in the graphic visual style of classic arcade games depict the societal battles Māori and Polynesian people have fought and continue to face. The works evoke a sense of 'nostalgia' as a means of questioning negative realities and positive memories to examine glitches in New Zealand's history.

GALLERY 4 & SIDEWALK GALLERY

15 AUG - 19 SEP

OPENING:

WED 14 AUG, 5PM



DA-KU SET, 2018

JALAL ASGHER

—
PORTRAITS
—

Taking inspiration from the Pre-Raphaelite era, these delicate pencil portraits of women highlight themes of timelessness and the beauty of strength. Asgher references vintage portrait photography of women from the 1900s and obscures the background to focus the viewers gaze on the subject's face. He further enhances facial features that reveal complex emotions of calm and strength.

GALLERY 1

26 SEP - 24 OCT

OPENING:

WED 25 SEP, 5PM

PAOLA KING-BORRERO

—
TAMATA
—

Inspired by her recent travels to Athens and New Orleans and influenced by her South American background, King-Borrero focuses on mysticism and the mingling of spiritual beliefs. She presents delicately crafted shrines assembled from an array of found materials such as bones, insects, textiles and tamata, the silver votive offerings left in churches.

GALLERY 2

26 SEP - 24 OCT

OPENING:

WED 25 SEP, 5PM



JALAL ASGHER, 2018



PAOLA KING-BORRERO, 2018

ANNA-ROSE CARPENTER &
FELIXE LAING

—
ON COMMON GROUND
—

This series of textile objects by Anna-Rose Carpenter and Felixe Laing have been informed by their friendship and mutual dedication to making as a way of life. This technically explorative body of work employs processes such as weaving, knitting and silk painting.

GALLERY 3
26 SEP - 24 OCT

OPENING:
WED 25 SEP, 5 PM

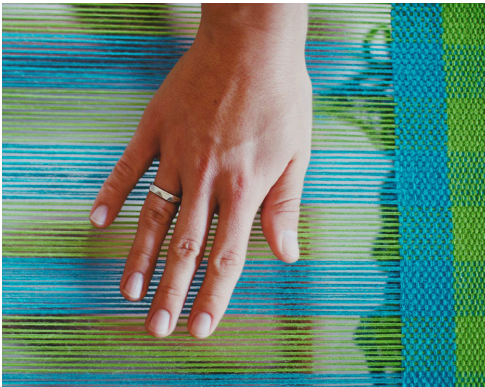
AMBER STAR &
GARTH STEEPER

—
BODY OF NARRATIVE
—

Body of Narrative showcases new paintings by Amber Star and Garth Steeper, which evoke ideas about femininity. Star's focus is on the physical contortions of the body. She has an intuitive approach that allows her subconscious to inform her painterly process. Steeper has a similar approach, but is interested in painting as a visual tool to tell stories. In this series of work, he depicts the three witches from Macbeth.

GALLERY 4
26 SEP - 24 OCT

OPENING:
WED 25 SEP, 5 PM



ANNA BIRCHALL, 2018



GARTH STEEPER, 2018

MAKE



ADULTS



REBECCA CLAIRE

DIGITAL PHOTOGRAPHY
MANUAL SETTINGS

Learn the basics, increase your confidence and get creative in this one day workshop taught by a photographer with over 10 years' experience. Discover manual camera controls such as shutter speed, aperture, exposure, ISO and white balance. Learn about different lenses, composition principles and participate in a fun group photoshoot! This workshop is suitable for those wanting to try a DSLR before they invest or learn how to operate their own camera.

WHEN SAT 21 SEP

12 - 4PM

COST \$85

CLASS 10 MAX

ADDITIONAL MATERIALS LIST WILL BE
PROVIDED ON ENROLMENT

WWW.REBECCACLAIRE.COM.AU

DANIEL LARSEN-BARR

WHY WRITE?

Why Write? begins by examining a selection of poems. By breaking down the themes, structures and vocabulary in other texts, you can use those features to improve your own work in all modes of writing. You will produce short pieces which we share with the group. Each participant receives tailored and detailed feedback on their effort. Because writing is a form of self-expression, it can be more than just fun; it translates thoughts and emotions into words. Anyone can benefit from these techniques.

WHEN FRI

1PM - 4PM

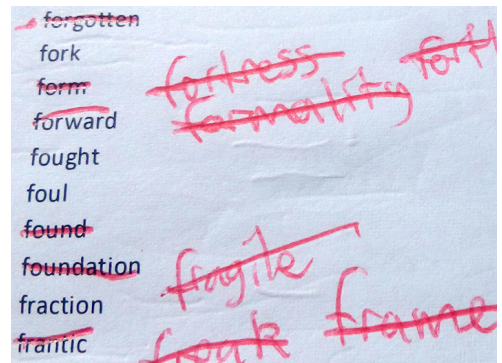
STARTS 2 AUG

LENGTH 6 WEEKS

COST \$160

CLASS 15 MAX

MATERIALS INCLUDED



TO BOOK, VISIT STUDIOONE.ORG.NZ

ALVIN XIONG

REALISTIC DRAWING

Hone your skills in traditional drawing techniques and simplify the challenge of capturing a likeness in this stimulating course. Using reference materials supplied by the tutor and a photo of your choice, you will learn methods for starting a drawing and how to build on your work using shading, outline and texture. The tutor will recommend tips for correcting shape and will help make your drawings look true to life.

WHEN MON
9.30AM - 12PM

STARTS 29 JUL

WHEN THU
9.30AM - 12PM

STARTS 1 AUG

LENGTH 8 WEEKS

COST \$240

CLASS 12 MAX

ADDITIONAL MATERIALS LIST WILL BE PROVIDED ON ENROLMENT



ALVIN XIONG

PORTRAIT PAINTING IN OIL

Explore realistic portrait painting while working from a photo of your choosing. Learn oil painting techniques and how to use various brushes. You will begin with underpainting and then move to developing the structure of the head and facial features. The tutor will help with lighting, shading and colour choices. All ability levels are welcome, as the class is structured to provide one on one instruction to each student.

WHEN THU
1 - 3.30PM

STARTS 1 AUG

LENGTH 8 WEEKS

COST \$240

CLASS 9 MAX

ADDITIONAL MATERIALS LIST WILL BE PROVIDED ON ENROLMENT



TO BOOK, VISIT STUDIOONE.ORG.NZ

ELESHEA D'SOUZA

—
**ACRYLIC POURING &
 RESIN ART: TREE RINGS
 TECHNIQUES**
 —

Learn the tricks of acrylic pouring with artist Eleshea D'Souza. In this three week course you will create three unique pieces of artwork and master the tree rings or topography technique. Your original artworks will then be sealed with resin to maximize wow factor and achieve a glossy finish.

WHEN TUE
 7 - 9PM
 STARTS 13 AUG
 LENGTH 3 WEEKS
 COST \$220
 CLASS 12 MAX

PLEASE BRING YOUR OWN MDF PANELS FOR
 POURING, ALL OTHER MATERIALS INCLUDED

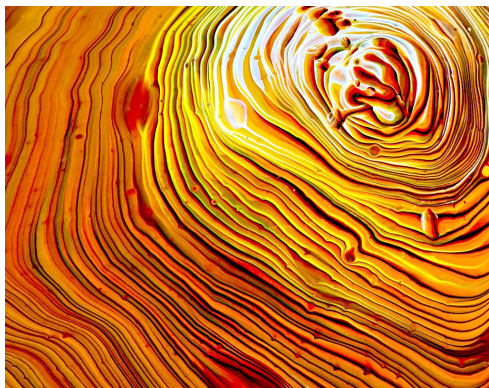
JARAD BRYANT

—
**EXPRESSIVE LIFE DRAWING
 & PAINTING**
 —

The human form will inspire you in this fun life drawing and painting course, suitable for all levels of experience. Each week you will develop your artistic abilities and intuitive direction as you work through guided exercises with professional life models and a supportive tutor. Come and explore a range of drawing and painting techniques with references to art history in a relaxed environment while listening to music.

WHEN MON
 7 - 9PM
 STARTS 29 JUL
 LENGTH 9 WEEKS
 COST \$230
 CLASS 13 MAX

TERM BOOKINGS WILL RECEIVE A FREE
 STARTER MATERIALS PACK



TO BOOK, VISIT STUDIOONE.ORG.NZ

HAN NAE KIM

—
A-Z CHARCOAL DRAWING
—

This is an intensive drawing workshop designed for art enthusiasts of all ages and experience levels. Using charcoal as the main medium you will experiment with a range of drawing processes to explore this medium's limitless possibilities. Through a series of exercises, you will then learn how to introduce other media to the charcoal. Be guided from A to Z and discover the beauty of charcoal!

WHEN SAT 7 SEP
10AM - 2PM
COST \$95
CLASS 12 MAX
MATERIALS INCLUDED



HAN NAE KIM

—
MARK & PROCESS
—

French philosopher, Gilles Deleuze considered an artist's canvas a potential space for unconscious visual expression, activated through process. This class will introduce you to the process of drawing using a range of media. Explore methods of mark making which are both spontaneous and considered. Learn how 'The Self' can be an active force for self-expression and a tool to develop your own personal visual language.

WHEN THU
7 - 9PM
STARTS 8 AUG
LENGTH 4 WEEKS
COST \$165
CLASS 12 MAX
MATERIALS INCLUDED

TO BOOK, VISIT STUDIOONE.ORG.NZ

KATIE SMITH

TEXTILE BLOCK PRINTING

Create your own collection of beautiful printed designs on fabric. You'll be using simple tools to make your own printing blocks and learn about repeat pattern making. A carefully curated colour palette of textile inks will be provided. At the end of the workshop you will take home three printed samples on cotton and a completed printed linen tea towel. All experience levels welcome.

WHEN SAT 31 AUG
10.30AM - 2.30PM

COST \$95

CLASS 8 MAX

MATERIALS INCLUDED

WWW.SMITTENDESIGN.CO.NZ



BETH SERJEANT

INTAGLIO PRINT PLUS

Learn intaglio with printmaking artist Beth Serjeant, who has worked as an artist in print for over 30 years, collaborating with many established New Zealand writers. Experiment with expressive mark making through the versatile medium of print. You will cover a range of printing techniques such as woodcut, linocut, etching and intaglio. This project focused course is suitable for all levels.

WHEN TUE
10AM - 12PM

STARTS 6 AUG

LENGTH 6 WEEKS

COST \$240

CLASS 6 MAX

MATERIALS INCLUDED



TO BOOK, VISIT STUDIOONE.ORG.NZ

WHAU STUDIOS

SILVER RING CASTING

No experience is required to attend this three-part starter jewellery course. The first two sessions will introduce you to specialist jeweller's wax to scrape, file, drill, sand and shape your own unique carved ring. Your design will then be cast in silver – a true 'one off' as once the wax is melted the mould is lost. In the final session you will learn how to finish your casting, resulting in a distinct piece of jewellery.

WHEN WED
6.30 - 9PM
STARTS 21 AUG
LENGTH 3 WEEKS
COST \$150
CLASS 8 MAX

INCLUDES JEWELLER'S WAX FOR CARVING,
CASTING PRICE VARIES BETWEEN \$10 - \$60
DEPENDENT ON WEIGHT

HOLLIE RYAN

STATEMENT EARRINGS

Discover everything you need to know about creating art for your ears using polymer clay! Techniques covered in this workshop include conditioning clay, marbling, sanding, making earrings from slabs as well as texturing and colour blending. By the end of the day you will take home several pairs of earrings. This workshop is ideal for beginners. Bring your own ideas along, everything else is provided.

WHEN SAT 3 AUG
10AM - 2PM
WHEN SAT 17 AUG
10AM - 2PM
COST \$100
CLASS 12 MAX

MATERIALS INCLUDED
WWW.HARKHANDMADE.COM



TO BOOK, VISIT STUDIOONE.ORG.NZ

MAHA TOMO

—
TOKI BONE CARVING
—

Create your own Toki out of beef bone. This tikanga based contemporary workshop will introduce you to various carving and design processes. Develop a new technical skill set using files, drills and polishing tools. You will also have the option of adding a Paua shell insert. Experiment with both wet and dry sanding techniques to finish off your taonga. During this workshop participants will also learn traditional lashing and binding techniques used in Māori Object art.

WHEN SAT 27 JUL
9.30AM - 4PM

COST \$150
CLASS 12 MAX

MATERIALS INCLUDED

PLEASE BRING A PLATE OF KAI FOR A SHARED LUNCH

WWW.ABSCA.NZ



ANTOINETTE RATCLIFFE

—
INTRODUCTION TO
TAXIDERMISTRY: BIRDS AND
SMALL CREATURES
—

Ever wanted to learn how to taxidermy? Antoinette is a practicing artist who incorporates taxidermy into her artworks. She will demonstrate the basics of small animal taxidermy and help you make your first piece. Together you will discuss the ethics involved in taxidermy, as well as what to expect during the process including health and safety elements and mounting considerations.

WHEN SAT 27 JUL
10AM - 5PM

COST \$200
CLASS 8 MAX

MATERIALS INCLUDED, YOU WILL NEED TO SUPPLY YOUR OWN SPECIMEN

WWW.THE-SICK-BAY.COM



TO BOOK, VISIT STUDIOONE.ORG.NZ

SIOBHAN RIDGLEY

BITCHES MAKE STITCHES

In this embroidery course you start from the beginning and learn an array of stitch techniques. Experiment with botanical embroideries and techniques such as stem stitch, french knots and five prong roses. Learn how to use your equipment as well as the modern tricks of the trade. Explore different thread counts and learn how to render with brick stitch. Come and enjoy this meditative hobby in a welcoming safe space.

WHEN TUE
6.30 - 8PM

STARTS 3 SEP

LENGTH 4 WEEKS

COST \$55

CLASS 20 MAX

MATERIALS INCLUDED

FOLLOW ON INSTAGRAM:

@SIOBHAN__LUCIA

DANCE PLANT COLLECTIVE

MINDFUL MOVEMENT

Start your day mindfully, and flow along with us to some great music! This dance fitness class is aimed at all levels and created by professional dancers from Dance Plant Collective. Combining elements from contemporary dance, ballet, yoga and pilates, this class will stretch, strengthen and move you in new ways. Improve your fitness, sculpt your body and find a deeper mind and body connection.

WHEN TUE
9.30 - 10.30AM

STARTS 30 JUL

LENGTH 4 WEEKS

COST \$40

CLASS 10 MAX

BRING YOUR OWN YOGA MAT

FOLLOW ON INSTAGRAM:

@DANCEPLANTCOLLECTIVE



TO BOOK, VISIT STUDIOONE.ORG.NZ

KAIRAVA GULLATZ

UNIQUE CLAY VESSELS

This course will cover the design and production of ceramic vessels. Techniques on how to build with clay will be demonstrated, including ways to decorate surfaces with slip colours, carving, embossing or 3D applications. You will become familiar with clay hand-building as well as throwing vessels on the pottery wheel. Glazing techniques and stacking the kiln are also part of this course. All experience levels welcome.

WHEN	TUE
	6 - 9PM
STARTS	13 AUG
LENGTH	6 WEEKS
WHEN	WED
	6 - 9PM
STARTS	14 AUG
LENGTH	6 WEEKS
COST	\$335
CLASS	9 MAX

INCLUDES UP TO 10KG CLAY,
GLAZES AND FIRINGS

WWW.CERAMICDESIGN.CO.NZ
@KAIRAVACERAMICS



KAIRAVA GULLATZ

CLAY EXPLORATIONS

This class gives you time to explore the process of shaping clay as well as extending your knowledge about the processes of a ceramic studio. Shape sculptures using figurative or abstract forms for inspiration and enjoy expressing your individual concept. Class demonstrations will cover a wide range of sculpting techniques including throwing vessels on the pottery wheel, surface treatments (including carving), applications, and decorating with slip colours and glazes.

WHEN	THU
	10AM - 1PM
STARTS	15 AUG
LENGTH	6 WEEKS
COST	\$335
CLASS	9 MAX
INCLUDES UP TO 10KG CLAY, GLAZES AND FIRINGS	



TO BOOK, VISIT STUDIOONE.ORG.NZ

KAIRAVA GULLATZ

—
THROWING YOUR
FUTURE CROCKERY

Experience throwing your future crockery! Explore a variety of hand building techniques for creating unique shapes of all kinds. There will be demonstrations covering a variety of techniques to decorate the surface of the vessels using carving, applications and colourful slips. All vessels will be fired and glazed ready for you to collect.

WHEN SAT 3 & SUN 4 AUG
10AM - 3PM

WHEN SAT 28 & SUN 29 SEP
10AM - 3PM

COST \$290
CLASS 9 MAX

INCLUDES UP TO 10KG CLAY, GLAZES
AND FIRINGS



VAL ONG

—
DROP IN CERAMICS STUDIO

Need some time to work on a project? Want some technical advice on your process? You can now work independently in our fully-equipped ceramics studio. This weekly, drop-in session is ideal for practitioners requiring studio space to work on their own projects or creative practice. A technician will be available to provide basic technical advice. Please bring your own tools, materials, and projects to work on.

Pre-booking is preferred as space is limited. Please sign in at reception, prior to 5pm.

WHEN FRI
11AM - 7PM

COST \$5 PER HOUR, PER PERSON
BRING YOUR OWN TOOLS & MATERIALS
\$30 CONCESSION CARDS AVAILABLE FROM
RECEPTION



TO BOOK, VISIT STUDIOONE.ORG.NZ

KIDS AND TEENS



TANJA NOLA
—
TEEN ART WORK
—

In a fully equipped art studio, students work progressively to develop their own visual language while learning drawing, painting, printmaking, ceramics and 3D construction skills. Experienced artist and tutor, Tanja, supports students in art-making techniques and encourages research and exploration into art history, music and popular culture. Directed by individual needs, students discover their creative potential and build confidence in their art practice. This course is ideal for teens at all skill levels and is a great bridge for those considering further education within the visual arts.

AGE 13 TO 17
WHEN THU
4 - 6PM
STARTS 1 AUG
LENGTH 7 WEEKS
COST \$250
CLASS 8 MAX
MATERIALS INLCUDED



DASUL LEE
—
EXPLORING GREAT ARTISTS
—

Students will discover great artists and learn about different art mediums and techniques in this mixed-media based workshop. The focus will be on exploring colours, lines, patterns and textures, based on some famous artists and art pieces of past and present. By looking at different artists each week from modern to contemporary, students will gain an appreciation of Art History and an understanding about art through participation and contribution.

AGE 13 TO 17
WHEN WED
4 - 5.30PM
STARTS 31 JUL
LENGTH 7 WEEKS
COST \$185
CLASS 8 MAX
MATERIALS INCLUDED



TO BOOK, VISIT STUDIOONE.ORG.NZ

KAIRAVA GULLATZ

—
SWOOPING OWLS &
LEAPING LEOPARDS
—

Eagles, fairies, sky divers... beings from the sky are your inspiration in this workshop where you will be creating unique 3D wall plaques. Taking a playful approach, children will hand build their sculptures from clay. Once all forms are finished, clay slips will be applied as a final colourful layer. Pottery wheels are also available to explore throwing small vessels. Everything will be glazed and fired to make the figures durable and the pots fully functional.

AGE 6 TO 14
WHEN WED
4 - 5.30PM
STARTS 14 AUG
LENGTH 6 WEEKS
COST \$185
CLASS 12 MAX

MATERIALS AND FIRINGS INCLUDED



THOMAS GEDDES

—
CITYSCAPES OF AUCKLAND
—

Create a large, detailed cityscape of Auckland, taking inspiration from the works of New Zealand artist Fiona White, and Austrian-born New Zealand artist Friedensreich Hundertwasser. We will be creating a mixed media painting, including historical and contemporary man-made structures, and natural land forms. With a focus on perspective and colour, we will also be exploring line, mark making, paint application techniques, pattern and composition.

AGE 7 TO 14
WHEN TUE
4 - 5.30PM
STARTS 6 AUG
LENGTH 7 WEEKS
COST \$185
CLASS 10 MAX
MATERIALS INCLUDED

[IMAGE CREDIT NOTE] ZWOLLE BY
FRIEDENSREICH HUNDERTWASSER



TO BOOK, VISIT STUDIOONE.ORG.NZ

SCHOOL HOLIDAYS



KAIRAVA GULLATZ

BIRD JUGS

Let's make jugs for juice with matching mugs! Shaping soft white clay with your hands into extraordinary bird vessels will make this creative class a fun experience. A pottery wheel is available for you to experiment throwing small bowls too. Everything will be glazed and fired for you to make it durable and usable.

AGE 5 TO 12

WHEN MON 8 &
TUE 9 JUL
10AM - 2PM

COST \$130

CLASS 12 MAX

MATERIALS AND FIRINGS
INCLUDEDDRESS FOR MESS AND PACK
A LUNCH AND A DRINK
BOTTLE

KAIRAVA GULLATZ

REMARKABLES

Turn your favourite characters from stories, books, movies or just your creative imagination into unique clay sculptures. First, we will sit together and share our ideas and stories. The next step is to draw our favourite figure in action. And once this is done, we will begin to shape our creatures from soft clay. You will learn about clay hand building techniques as well as how to throw a small vessel on a pottery wheel.

AGE 6 TO 14

WHEN WED 10 &
THU 11 JUL
10AM - 2PM

COST \$130

CLASS 12 MAX

MATERIALS AND FIRINGS
INCLUDEDDRESS FOR MESS AND PACK
A LUNCH AND A DRINK
BOTTLE

LEELA BHAI

ACETATE PAINTING

In this one-day workshop, you will begin by selecting imagery of personal significance, arranging them in a series of compositions that consider scale, balance, foreground, middle ground and background. Using acetate film they will paint over their chosen composition, transferring their imagery to abstract backgrounds, painted in ways to express their individual interpretation of the significance or symbolism of their images.

AGE 8 TO 14

WHEN THU 11 JUL
10AM - 2PM

COST \$50

CLASS 12 MAX

MATERIALS INCLUDED

DRESS FOR MESS AND PACK
A LUNCH AND A DRINK
BOTTLETO BOOK, VISIT STUDIOONE.ORG.NZ

LEELA BHAI

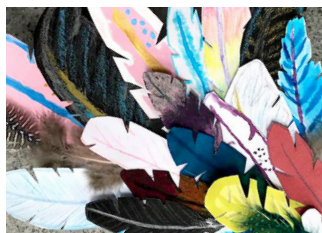
BIRDS OF A FEATHER FLOCK TOGETHER

Over two days, your child will create an abundance of paper feathers, studying the dimensions and details of real feathers through observational drawings. Each feather will then be personalised using a wide range of techniques including cutting, painting, collaging and dyeing in your own unique way. You will then construct the cardboard framework, attaching each feather, producing a layered and 3D wingspan.

AGE 6 TO 12
WHEN MON 15 & TUE 16 JUL
10AM - 2PM

COST \$85
CLASS 12 MAX

MATERIALS INCLUDED
DRESS FOR MESS AND PACK A LUNCH AND A DRINK BOTTLE



KAIRAVA GULLATZ

SNUGGLE UP

Come along to this fun clay class and be inspired by animal mums with their young ones. Enjoy shaping the soft material with your hands into beautiful sculptures. Decorating everything with slip colours is the last step for our creative journey. A pottery wheel is available for you to experiment throwing small bowls. Everything will be glazed and fired for you, making your figures durable and the bowls fully functional.

AGE 5 TO 12
WHEN MON 30 SEP & TUE 1 OCT
10AM - 2PM

COST \$130
CLASS 12 MAX
MATERIALS AND FIRINGS INCLUDED
DRESS FOR MESS AND PACK A LUNCH AND A DRINK BOTTLE



LEELA BHAI

PATCHWORK PAINTING

Your child will experiment with creating abstract textures and relief surfaces on a large collection of small squares. Using several layers of paint, they will learn numerous techniques of mark making, taping, smudging and scratching. They will then assemble and edit the collection to form one large piece.

AGE 6 TO 12
WHEN MON 30 SEP & TUE 1 OCT
10AM - 2PM

COST \$85
CLASS 12 MAX
MATERIALS INCLUDED
DRESS FOR MESS AND PACK A LUNCH AND A DRINK BOTTLE



TO BOOK, VISIT STUDIOONE.ORG.NZ

KAIRAVA GULLATZ

—
WONDRIOUS
VEHICLES
—

Captain Cook's Endeavour or spaceships with Martians, all vehicles that existed in the past or will take us places in the future are our inspiration for this clay class. Children will be able to create a stunning sculpture and learn about pottery techniques in a relaxed environment. All ceramic works will be glazed and fired to make them durable.

AGE 6 TO 14

WHEN WED 2 &
THU 3 OCT
10AM - 2PM

COST \$130

CLASS 12 MAX

MATERIALS AND FIRINGS
INCLUDEDDRESS FOR MESS AND PACK
A LUNCH AND A DRINK
BOTTLE

REBECCA CLAIRE

—
DIGITAL
PHOTOGRAPHY
FOR KIDS
—

This interactive workshop shares basic camera techniques and applications in a fun and creative way. During the workshop children will get hands-on through mindfully placing and photographing subjects in natural light, to develop framing, pattern and composition principles. The students can then work together to set-up a themed photo shoot.

AGE 6 TO 11

WHEN FRI 4 OCT
10AM - 2PM

COST \$50

CLASS 12 MAX

ADDITIONAL MATERIALS
LIST PROVIDED ON
ENROLMENT, CAMERAS
AVAILABLE IF NEEDEDPACK A LUNCH AND A
DRINK BOTTLE

LEELA BHAI

—
PICASSO
PORTRAITS
—

As one of the most influential artists of all time, Picasso introduced the world to Cubism over 100 years ago. We will examine how Picasso explored ways to depict form by reducing it to a collection of 2D planes in his expressive collaged paintings. And how he mastered the power of a simple line in his caricature drawings. You will create a series of portraits using mixed media to create rich, textured images of yourself and your family members.

AGE 6 TO 12

WHEN TUE 10 OCT
10AM - 2PM

COST \$50

CLASS 12 MAX

MATERIALS INCLUDED

DRESS FOR MESS AND PACK
A LUNCH AND A DRINK
BOTTLETO BOOK, VISIT STUDIOONE.ORG.NZ

BOOKING INFORMATION

COURSE BOOKINGS

To enrol in one of our courses, contact Studio One Toi Tū and quote the course number. To secure your booking, payment must be paid in full prior to the course start date. Payments can be made by phone or in person at 1 Ponsonby Road. We accept payment by cash, eftpos, credit card and cheque.

REFUNDS

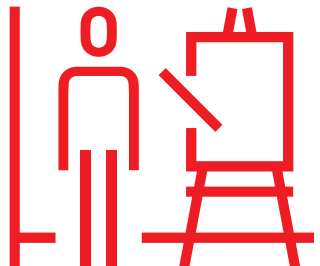
If you cancel your enrolment, you must let us know at least three working days before the class starts to receive a refund. A \$20 cancellation fee will be incurred. Payments will be refunded in full if Studio One Toi Tū cancels the course. Refunds take approximately 10 working days to process.

YOUTH COURSES

Please sign your children in and out of their course at our main reception area. Wear clothes that are ready to get messy. Bring a water bottle, snacks and lunch for all day classes.

CERAMICS COURSES

Finished pottery from classes will be available to pick up from Studio One Toi Tū approximately four weeks after the class finishes. Please understand even with the most careful handling, in some cases work may break when kiln-fired.



HIRE



VENUE HIRE

Studio One Toi Tū has a range adaptable outdoor and indoor spaces to meet your needs and bring your idea to life. Come in to view our spaces for hire, we will happily show you around and discuss how we can support your event or practice.

MEETING AND EVENT SPACE

Whether you're a designer looking for a space to show your latest collection, an artist looking for an exhibition space or a book club seeking a central meeting place - we have the space for you. To find out how we can support you, visit 1 Ponsonby Road, or call us on 09 376 3221.

HIRE RATES

We have a range of room hire options available at an hourly rate*. To view our rates or to book a room please visit booking.aucklandcouncil.govt.nz/facilities

* A community rates discount is available by application

SPACES FOR HIRE

ROOM 5

—
A versatile meeting, workshop and function room with heating and air conditioning. Capacity: 50 people.

ROOM 6

—
A sunny versatile meeting, workshop and function room with views onto the rear deck. Capacity: 25 people.

ROOM 10

—
A large clean studio space used for conferences, seminars, workshops, pop-up exhibitions, film screenings and more. The space can be booked hourly or weekly. Capacity: 100 people.

ROOM 11

—
A dedicated art workshop to accommodate visual art practices or creative workshops. Fitted with a printing press, tables, chairs, easles and spotlights. This space can be booked hourly, daily, or half-daily. Capacity: 30 people.

ROOM 12

—
Dedicated art workshop set up to accommodate sculpture practices. Fitted with pottery wheels. This space can be booked hourly, daily, or half-daily. Capacity: 20 people.

STUDIO ONE — TOITŪ

OPENING HOURS

—

All spaces

Mon – Thu	9am – 7pm
Fri	9am – 5pm
Sat	9am – 4pm

—

Residents

24/7 access

ACCESS

—

All rooms and galleries
are wheelchair accessible.

LOCATION

—

1 Ponsonby Road
Auckland, New Zealand

CONTACT

—

09 376 3221
info@studioone.org.nz
studioone.org.nz

facebook.com/studioonetoitu
instagram.com/StudioOne.ToiTu

#VisitCreateMake
#HirePlayShow
#StudioOneToiTu