

STUDIO  
ONE

—  
TOI TŪ

WHAT'S ON

—  
JAN - APR 2018

PROGRAMME

1

WELCOME TO  
STUDIO ONE TOI TŪ.

WE HAVE A LINE UP OF  
FUN, FREE EVENTS FROM  
EXHIBITIONS TO CREATIVE  
MIXERS, COURSES,  
WORKSHOPS AS WELL AS  
GALLERY AND STUDIO HIRE  
SPACE AVAILABLE FOR ALL.

VISIT, CREATE, MAKE AND  
CHECK OUT WHAT'S ON  
OFFER AT STUDIO ONE  
TOI TŪ THIS SUMMER.

## VISIT, CREATE, MAKE

---

The creative precinct at Studio One Toi Tū is a hub for making. At the intersection of arts and community, it is a place to meet, exchange, develop, learn and join a neighbourhood of creative activity at 1 Ponsonby Road.

With opportunities for individuals and community groups through to experienced professionals, we offer a range of studio hire options for you to workshop an idea, learn a new technique or sharpen your skills.

If you would like to receive details of upcoming events and programmes, like our Facebook page, follow us on Instagram, visit our website or email us to subscribe to our newsletter.

### FIND OUT MORE

---

09 376 3221  
info@studioone.org.nz  
studioone.org.nz

facebook.com/studioonetoitu  
instagram.com/StudioOne.ToiTu

#VISITCREATEMAKE  
#HIREPLAYSHOW  
#STUDIOONETOITU

### LOCATION

---

1 Ponsonby Road  
Auckland



# CONTENTS

**OPEN**

P. 6-9

**SHOW**

P. 10-19

**MAKE**

P. 20-36

—

**ADULTS**

P. 21-28

—

DROP-IN STUDIOS

P. 22

DRAWING AND PAINTING

P. 22, 23 & 28

CREATIVE WRITING

P. 23

TAXIDERMY

P. 25

PERFUMERY

P. 24

CERAMICS

P. 21, 26 & 27

JEWELLERY

P. 28

PRINTMAKING

P. 28

**KIDS & TEENS**

P. 29-31

**SCHOOL HOLIDAYS**

P. 32-36

—

SPRING

P. 33-35

SUMMER

P. 35-36

**HIRE**

P. 27-48



# VISIT, CREATE, MAKE



## HIRE, PLAY, SHOW

---

Your involvement is central to the ideas and experiences realised at Studio One Toi Tū. We welcome innovative approaches to creative practice and offer opportunities for you to be a part of our programme of courses and workshops. Our galleries are also available for hire with an annual call for proposals to exhibit as part of our exciting and diverse exhibition programme. So get involved and submit your proposal now.

## CALL FOR PROPOSALS

---

Our gallery exhibition programme for our four ground floor galleries is open to your proposals annually via an online application process. The next call for proposals for exhibitions in 2019 will open in June 2018.

For more information about submitting a proposal, contact us at [studioone.org.nz](http://studioone.org.nz).

OPEN



# CREATIVE TALKS, POP-UPS AND DROP-INS



## MAKE IT HAPPEN HERE

---

From creative conversations to pop-up exhibition there's always something happening at 1 Ponsonby Road. If you require a studio for a project or workshop, would like to showcase your work or are in need of a venue to host a special event, contact us to discuss the opportunities available for you at Studio One Toi Tū. To book a space please visit [www.booking.aucklandcouncil.govt.nz/facilities](http://www.booking.aucklandcouncil.govt.nz/facilities).

## SCRIBBLEAKL

---

ScibbleAKL is a weekly creative mixer at Studio One Toi Tū active since 2011, scribeAKL is currently joined by over 200 'scribblers'. Bringing together a community of thinkers and doers from a range of disciplines and industries, ScribbleAKL is an open collective for you to talk and share ideas and find feedback on your own projects in a friendly and supportive collaborative environment. With opportunities to get involved in the many great pop-up activities created by ScribbleAKL at Studio One Toi Tū and across the Auckland region there are so many opportunities to get your creativity moving.

FREE MEETUP ON MONDAYS AT 7PM -  
WALK-INS WELCOME  
[SCRIBBLEAKL.TUMBLR.COM](http://SCRIBBLEAKL.TUMBLR.COM)

FOR MORE INFORMATION VISIT [FACEBOOK.  
COM/SCRIBBLEAKL](https://www.facebook.com/SCRIBBLEAKL)



#SCRIBBLEAKL

## SIDEWALK GALLERY

---

The Sidewalk Gallery is a dedicated window exhibition space at 1 Ponsonby Road which features a range of work including video, sculpture, site specific installations and other visual arts practices.

Proposals are accepted on an ongoing basis and there is no fee to exhibit in this space. Email us with your ideas.

CONTACT:  
[INFO@STUDIOONE.ORG.NZ](mailto:INFO@STUDIOONE.ORG.NZ)



SIDEWALK GALLERY



## TEAM BUILDING

---

Looking for a great way to build creative thinking in a supportive environment? Why not try a team building exercise for your work place or community group at Studio One Toi Tū. Choose from one of our creative workshops or develop a collaborative project that reflects your team's dynamic. We will help you create the project and theme that works for you for a great day out of the office.

CONTACT:

INFO@STUDIOONE.ORG.NZ

## ARTY PARTY

---

Individually themed art party packages for all ages are available through Studio One Toi Tū. If you are looking for a fun and unique art experience to share with friends we will pair you with the right tutor to make this day an extra special one with something unique for everyone to take home.

CONTACT:

INFO@STUDIOONE.ORG.NZ



TEAM BUILDING



ARTY PARTY

SHOW



# EXHIBITIONS



## AUCKLAND FRINGE 2018

### VENUE SPACE

We are delighted to announce that Studio One Toi Tū will be hosting acts for Auckland Fringe 2018. If you have a show and are currently looking for a space to hire then get in touch. We offer prices on a daily or hourly basis for anything from dance to exhibitions, music to spoken word.

Auckland Fringe takes place from the 20 Feb - 4 March at many wonderful venues Auckland-wide. For more information visit [www.aucklandfringe.co.nz](http://www.aucklandfringe.co.nz) #aklfringe

WHEN 20 FEB - 4 MAR  
COST HOURLY - \$50  
DAILY - \$150  
PEOPLE 90 MAX

## DANCE PLANT COLLECTIVE

### THE COST OF ARMS AND LEGS

DANCE PLANT Collective presents *The Cost of Arms and Legs*, a second collaborative endeavour. A ritual, in three slices, giving trust to natural discoveries and curiosity.

A wordplay, a movement play, and a look at the fallings into place within their art form. DANCE PLANT Collective present a look at our thoughts, our relationships, and the unknown.

WHEN 1 - 4 MAR  
7.30 - 8.30PM  
COST FULL \$18, CONCESSION (STUDENT ID REQUIRED, SENIORS AND CHILDREN) \$15.  
PEOPLE 50 MAX  
GENRE DANCE, CONTEMPORARY ARTS  
CONTENT WARNING: NUDITY

# Fringe



ROOM 10 FOR HIRE



DANCE PLANT COLLECTIVE, 2017



SANDRA MORRIS

HAUORA WATERCOLOUR WORKSHOPS

Free weekend botanical watercolour workshops for young artists - that also teach about the amazing properties and history of native medicinal plants. Learn from esteemed tutor Sandra Morris about the technical aspects of botanic watercolour while also getting an introduction to rongoā Māori.

There will be two classes per day, running over the weekends in Summer.

AGE 8 TO 13  
WHEN SATURDAY  
10AM - 12PM & 2PM - 4PM  
DATES 10 FEB  
24 FEB  
3 MAR  
10 MAR  
COST FREE  
CLASS 20 MAX

BOOKINGS MUST BE MADE IN ADVANCE TO SECURE YOUR PLACE, PLEASE CONTACT [INFO@STUDIOONE.ORG.NZ](mailto:info@studioone.org.nz) OR CALL US ON 09 376 3221 FOR MORE INFORMATION.

PROUDLY SUPPORTED BY THE WAITEMATA LOCAL BOARD

HAUORA GARDEN

RICHARD ORJIS & A.D. SCHIERNING

An inner city creative garden project by artists Richard Orjis and A.D. Schierning. The garden is an interactive and sensory space that aims to reconnect urban dwellers with the natural world. It includes rongoā Māori, introduced medicinal, edible and endangered native plants.



HAUORA WATERCOLOUR WORKSHOPS



HAUORA GARDEN

GRACE CRAWSHAW MCLEAN

—  
ON THE SMALL  
—

*On The Small* is a selection of woven and drawn works inspired by Grace Crawshaw McLean's time spent in an isolated fishing town in Japan. Affected by the 2011 tsunami, these tiny coastal towns carry traces of trauma and resilience. These works explore the deep greens and blues of the forest and sea, the beauty of the cracked and worn qualities of the man-made, and the creatures and sounds that house a sense of otherworldliness and enchantment.

GALLERY ONE  
18 JAN - 8 FEB

OPENING:  
WEDNESDAY 17 JAN, 5PM

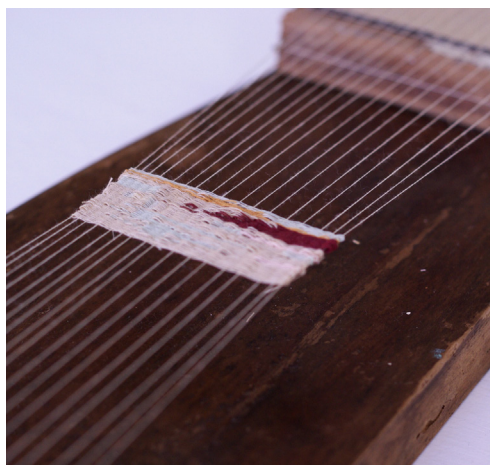
MARTIN SERCOMBE

—  
SPOKEN IN LIGHT  
—

*Spoken in Light* explores the relationship between Martin Sercombe's practice as photographer and moving image artist. The seascapes on display were shot at Whatipu, on Auckland's West Coast and at Milford Sound in Fiordland. Together, they explore the dynamics of natural phenomena, capturing the motion of clouds, waves and bird life on days when the weather and the light are at their most dramatic.

GALLERY TWO  
18 JAN - 8 FEB

OPENING:  
WEDNESDAY 17 JAN, 5PM



GRACE CRAWSHAW MCLEAN, 2014



MARTIN SERCOMBE, 2017

DIONNE WOOD

—  
WILD PAPER  
—

Wood turns her attention towards the natural world in *Wild Paper*, a group of floral chandeliers made with card stock. Drawing from millions of unique shapes, colours and forms of flowers and foliage from around the world, each piece is a complex riot of colour and construction.

GALLERY THREE  
18 JAN - 8 FEB

OPENING:  
WEDNESDAY 17 JAN, 5PM

ALEXANDRA MCFARLANE

—  
I THINK THIS IS A WOMB  
—

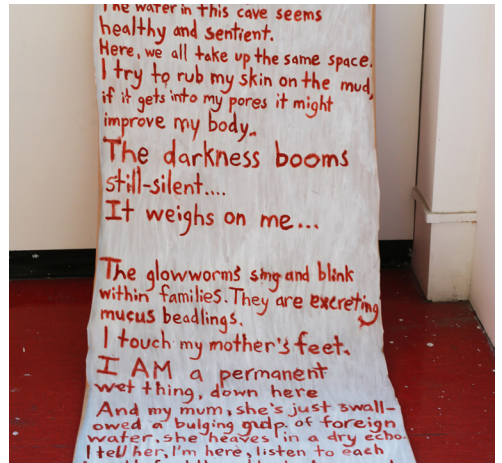
Holes exist in many planes of life. A hole is an anti-space that can be filled, removed, pierced, prodded and echoed. Holes are universal and transformative; even a human presence can be strange. Caves tell millennia of physical history, a true hole that can be visited.

GALLERY FOUR  
18 JAN - 8 FEB

OPENING:  
WEDNESDAY 17 JAN, 5PM



DIONNE WOOD, 2017



ALEXANDRA MCFARLANE, 2017

EMMA MUDGWAY

DOUBLE TAP THAT

*Double Tap That* investigates the visual language of selfie culture, considering the role of self-portraiture in contemporary life, and how the digital space allows us to explore notions of identity and self-expression.

GALLERY ONE  
15 FEB - 15 MAR

OPENING:  
WEDNESDAY 14 FEB, 5PM

GERRY PARKE

VAGUELY FAMILIAR:  
INSTANTLY RECOGNISABLE

Beyond the initial nostalgia, Parke's paintings of New Zealand figures explore notions of public identity and the transitory nature of fame.

*Vaguely familiar* juxtaposes iconic figures, as we remember them, with how they are today. Potentially the icons are now vaguely familiar to us, than instantly recognisable as they once were.

GALLERY TWO  
15 FEB - 15 MAR

OPENING:  
WEDNESDAY 14 FEB, 5PM



EMMA MUDGWAY, 2017



GERRY PARKE, 2016



GRACE BADER

—  
NO. 2  
—

Grace Bader's new body of work questions the presence of everyday objects in contemporary art.

Still Life (noun):

1. a painting or drawing of an arrangement of objects, contrasting with these in texture.

2. *No. 2* by Grace Bader.

GALLERY THREE  
15 FEB - 15 MAR

OPENING:  
WEDNESDAY 14 FEB, 5PM

GARTH STEEPER

—  
PORTRAITS AND OIL STUDIES  
—

Applying various approaches to painting, Steeper's latest works combine elements of historical artworks in a narrative setting. The artist has been influenced by Rembrandt's painting *The Syndics of the Clothmakers' Guild (De Staalmeesters)*, and features one large work on oil, portrait studies as well as oil sketches depicting natural landscapes with a folklore approach.

GALLERY FOUR  
15 FEB - 15 MAR

OPENING:  
WEDNESDAY 14 FEB, 5PM



GRACE BADER, 2017



GARTH STEEPER, 2017

TONI DOWD

—  
FAÇADE!  
—

In her first show in Auckland, Australian/ New Zealand artist Toni Dowd uses recycled materials to make sculptural pieces reflecting on what may lie underneath the façade. Whether we like it or not we all wear a mask, and seamlessly slip from one mask to another depending on our situation or surroundings.

“The face is after all, nothing more nor less than a mask” Agatha Christie

GALLERY ONE  
22 MAR - 12 APR

OPENING:  
WEDNESDAY 21 MAR, 5PM

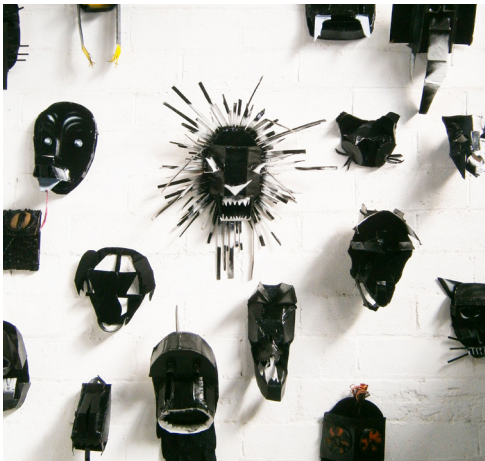
LINDSEY HORNE

—  
OUT OF SIGHT  
—

What we present versus what’s really going on inside can often be two very different emotions. *Out of Sight* explores just two of the many faces that we put on as coping and shielding mechanisms to the outside world. With a background in neuroscience, Horne studied the pre-frontal cortex and how it inhibits most of our behaviour, putting a halt to our innate reactions to our emotions. This understanding of people and their inner workings informs her work.

GALLERY TWO  
22 MAR - 12 APR

OPENING:  
WEDNESDAY 21 MAR, 5PM



TONI DOWD, 2017



LINDSEY HORNE, 2017

NATASHA WOOD

CIRCUMNUTATION

Circumnutation refers to a plant's irregular helical growth, such as a vine. Whether this behaviour is of internal origin or a reaction to stimuli remains a topic of controversy among botanists.

In Wood's first painting series black ink and white acrylic are used on plywood to explore perspective and balance.

GALLERY THREE  
22 MAR - 12 APR

OPENING:  
WEDNESDAY 21 MAR, 5PM



NATASHA WOOD, 2017

PAUL CHAPMAN

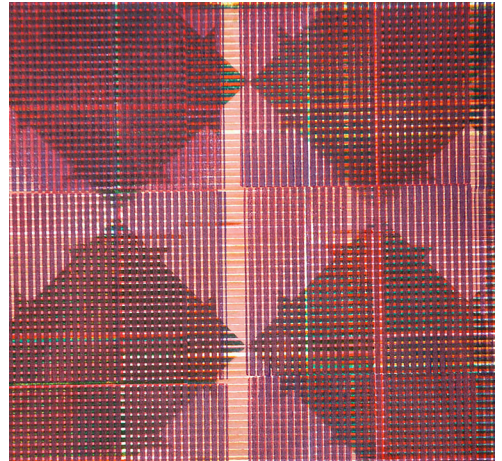
SPECTRA

Art works on paper are inherently fragile. Exposure to light can cause fading of media and can also yellow, darken and weaken paper.

Paul Chapman's work explores the use of sunlight as a vital component in the layering of his paper prints. Through a process of masking off areas and exposure to direct sunlight Chapman's prints have a sun bleached pattern etched into them. Often reworking, recycling and adding further layers to complete his works.

GALLERY FOUR  
22 MAR - 12 APR

OPENING:  
WEDNESDAY 21 MAR, 5PM



PAUL CHAPMAN, 2017

MAKE





# ADULTS



## DROP-IN STUDIOS CERAMICS JACK TILSON

—

Need some studio time to work on a project? Want some technical advice on your process? Now you can work independently or collaboratively on a casual-basis in the studios at Studio One Toi Tū. Our sculpture studio is open for practitioners to drop-in during the day. A technician will be available to support you with the tools and equipment available during our Open Studio hours. Workshops can be booked individually as well.

CERAMICS STUDIO OPEN:  
WEDNESDAYS 10AM - 2PM

COST \$5 PER HOUR/PER PERSON

BOOKINGS ARE REQUESTED AS SPACE IS LIMITED. CONTACT FOR AVAILABILITY [INFO@STUDIOONE.ORG.NZ](mailto:INFO@STUDIOONE.ORG.NZ) OR PHONE 09 376 3221



## EXPRESSIVE LIFE DRAWING AND PAINTING JARAD BRYANT

—

Learn how to draw and paint the human form in this fun life drawing course for all levels of experience. Each week you will develop confidence in your own artistic abilities and intuitive direction as you work through guided exercises with professional life models and a supportive tutor. Come and explore a wide range of drawing and painting techniques with references to art history in a relaxed environment while listening to music.

WHEN MONDAYS  
7 - 9PM

STARTS 5 FEB  
LENGTH 9 WEEKS  
COST \$225\*

CLASS 13 MAX  
INCLUDES MODELS' FEES

\*FOR ALL PAID TERM BOOKINGS YOU WILL RECEIVE FREE A MATERIALS PACK WITH PAPER AND DRAWING MATERIALS WITH YOUR REGISTRATION.



## MINDFULNESS THROUGH NATURE JOURNALING

Z.R. SOUTHCOMBE

---

Drawing upon different mediums, such as drawing and writing, you will build on an individual project that encourages exploration of your own unique creative expression. Discover new art forms in a supportive environment as you develop your own customized tool box of expressions to continue your practice in a supportive environment. Re-discover the beauty of the world around us in this fun and supportive class. No drawing skills are necessary, just a willingness to explore. Zee is an author, artist and educator passionate about helping people find and nurture their creativity.

WHEN WEDNESDAYS  
6.30 - 8.30PM

START 14 FEB

LENGTH 4 WEEKS

COST \$110

CLASS 8 MAX

INCLUDES ART MAKING TOOLS BUT PLEASE BRING YOUR OWN JOURNAL



## CHILDREN'S PICTURE BOOK WRITING

Z.R. SOUTHCOMBE

---

Always wanted to write a children's book? Got an idea but not sure how to turn it into a story? In these four workshops, you will be guided through outlining, drafting, and editing a short story for children. You will also learn how to work with an illustrator (or plan illustrations yourself) and about pathways to publication, with a focus on self-publishing. All levels of experience are welcome, though this class is geared towards beginners.

WHEN WEDNESDAYS  
6.30 - 8.30PM

START 14 MAR

LENGTH 4 WEEKS

COST \$140

CLASS 10 MAX

MATERIALS INCLUDED



## INTRODUCTION TO NATURAL PERFUMERY

VANESSA YORK

---

Create your own natural perfume. In Natural Perfumery all materials are derived from plants, or in a few cases from animals, for example beeswax, ambergris and civet. In this hands-on workshop you will experience up to 50 different aromatics and learn some techniques to evaluate them. You will develop a basic understanding of base, middle and top notes, and the building blocks of perfume composition. Learn about the history of perfume, including the advent of synthetics in the 20th century and the recent renaissance of Natural Perfumery. Explore blending different accords and come away with your unique natural perfume.

WHEN SATURDAY 17 FEB  
10AM - 1PM  
COST \$85  
CLASS 10 MAX  
MATERIALS INCLUDED



## NATURAL PERFUMERY: THE CHYPRE

VANESSA YORK

---

One of the five main fragrance families, the chypre (pronounced 'shee-pre') takes its name from Francois Coty's 1917 perfume of the same name, although the style itself is far older. Chypre perfumes are generally characterised by a haunting contrast between a fresh, citrus top and a woody/mossy base. Some great chypre perfumes include Mitsouko (Guerlain), Femme (Rochas), Caleche (Hermes), Miss Dior (Dior), No 19, Pour Monsieur, and 31 Rue Cambon (Chanel). In this workshop, we'll look briefly at the history of the chypre then concentrate on the natural aromatics that are typically used in creating these fragrances. Explore blending accords and make your own chypre perfume to take home. This class builds on the material covered in Introduction to Natural Perfumery, although it is not necessary to have done this workshop to participate.

WHEN SATURDAY 24 MAR  
10AM - 1PM  
COST \$85  
CLASS 10 MAX  
MATERIALS INCLUDED



**INTRODUCTION TO  
TAXIDERMY:  
BIRDS AND SMALL  
CREATURES**  
ANTOINETTE RATCLIFFE

Ever wanted to learn how to taxidermy? Antoinette is a practicing artist who incorporates taxidermy into her artworks. She will demonstrate the basics of small animal taxidermy and help you make your first piece. Together you will discuss the ethics involved in taxidermy, as well as what to expect during the process including health and safety elements and mounting considerations.

WHEN SATURDAY 3 MAR  
10AM - 4PM

COST \$200  
CLASS 8 MAX

**MATERIALS INCLUDED**

YOU WILL NEED TO SUPPLY YOUR OWN SPECIMEN FOR THE CLASS. FOR FURTHER INFORMATION ON THIS, PLEASE CONTACT STUDIO ONE TOI TŪ.



**INTRODUCTION TO MAKING  
STUDY SKINS:  
BIRDS**  
ANTOINETTE RATCLIFFE

Ever wanted to learn how to make a study skin? Antoinette is a practicing artist who incorporates taxidermy into her artworks, and has made study skin pieces for Birds New Zealand (Auckland). She will demonstrate the basics of bird taxidermy and help you make your first study skin piece. Together you will also discuss the ethics involved in taxidermy, as well as what to expect during the process including health and safety elements and mounting considerations.

WHEN SATURDAY 7 APR  
10AM - 3PM

COST \$200  
CLASS 8 MAX

**MATERIALS INCLUDED**

YOU WILL NEED TO SUPPLY YOUR OWN SPECIMEN FOR THE CLASS. FOR FURTHER INFORMATION ON THIS, PLEASE CONTACT STUDIO ONE TOI TŪ.



## ASSEMBLED KAIRAVA GULLATZ

---

The assembly of different elements, all made entirely from clay, is the initial inspiration this term. Each pottery technique supports a certain form or shape. This will lead to a treasure trove of components, which then can be used to build unique vessels. The class offers the opportunity to experiment with a variety of modelling techniques under the guidance of an experienced tutor. You will discover your individual way of handling clay, as well as enjoying shared time with fellow creative students. Surface decorations with slips and glazes are part of the teaching as well as learning to stack a kiln.

WHEN TUESDAYS  
6 - 9 PM

STARTS 27 FEB  
LENGTH 6 WEEKS  
COST \$335  
CLASS 9 MAX

INCLUDES UP TO 10KG CLAY, GLAZES AND FIRINGS FOR THIS AMOUNT OF CLAY

WHEN WEDNESDAYS  
6 - 9 PM

STARTS 28 FEB  
LENGTH 6 WEEKS  
COST \$335  
CLASS 9 MAX

INCLUDES UP TO 10KG CLAY, GLAZES AND FIRINGS FOR THIS AMOUNT OF CLAY

VISIT KAIRAVA'S WEBSITE:  
[WWW.CERAMICDESIGN.CO.NZ](http://WWW.CERAMICDESIGN.CO.NZ)  
FOLLOW ON INSTAGRAM:  
KAIRAVACERAMICS

## CLAY EXPLORATIONS KAIRAVA GULLATZ

---

This class gives you time to plunge into the procedures of shaping clay and extend your knowledge about the processes of a ceramic studio. Our theme is shaping sculptures, using figurative or abstract forms as inspiration. This is an opportunity to discover and enjoy expressing your ideas with clay. While you follow your individual concept and ways of handling the soft material, you will be supported with demonstrations of a wide range of sculpting techniques. Pottery wheels are available to throw vessels. You will also have time to engage in the process of treating surfaces with textures, carvings, applications as well as decorating with slip colours and glazes.

WHEN THURSDAYS  
10AM - 1PM

STARTS 1 MAR  
LENGTH 6 WEEKS  
COST \$335  
CLASS 9 MAX

INCLUDES UP TO 10KG CLAY, GLAZES AND FIRINGS FOR THIS AMOUNT OF CLAY





**FLYING SAUCERS****JACK TILSON**

—

Practice the mesmerising and relaxing art of throwing pots on the wheel. Try an electric and kick wheel. Experiment with different methods for producing ceramic forms such as cups, saucers and vases. Use locally sourced pigments and minerals for adding design elements to your pieces. Hone your design ideas over six weeks and make a range of wares.

WHEN THURSDAY

7 - 9PM

STARTS 22 FEB

LENGTH 6 WEEKS

COST \$280

CLASS 6 MAX

INCLUDES UP TO 10KG CLAY, GLAZES AND FIRINGS FOR THIS AMOUNT OF CLAY

**GOLD-LEAF & LACQUER:  
THE ART OF BROKEN PIECES**

—

Do you have any damaged piece of art made with wood, metal, ceramics or lacquer sitting in a dark corner of your storage? Embrace the markings of worn or broken objects by transforming them with lacquer and varnish, decorated with gold and silver leaf. Lacquer is one of the oldest natural materials used in East Asian countries to repair damages and fill / consolidate losses on artefacts. Amend, adorn and develop your torn or broken art pieces from paintings or sculptures to plates and vases back into its full-fledged glory. Bring along any art piece(s) to minimize further damage and conserve its aesthetic value.

WHEN SATURDAY 10 MARCH

10AM - 2PM

COST \$85

CLASS 12 MAX

BRING YOUR OWN OBJECT(S) FOR THE WORKSHOP, ALL OTHER MATERIALS WILL BE PROVIDED



## INTRODUCTION TO WET MEDIA

### CHARLOTTE MAGUIRE

Explore liquid media in a relaxed atmosphere as Charlotte reveals techniques for gouache, watercolour and acrylic ink, masking fluid and how to stretch your own paper. Observe the different moods and effects possible as you experiment with each media as well as try out different options to combine them. Charlotte is a painter and tutor experienced in working with different levels of ability and extending the capabilities of those with more experience. Beginner's welcome.

WHEN THURSDAYS  
6.30 - 8.30PM

START 15 FEB

LENGTH 8 WEEKS

COST \$240

CLASS 12 MAX

MATERIALS INCLUDED



## SILVER RING CASTING

### WHAU STUDIOS

No experience is required for you to take part in this three-part starter jewellery course. The first two sessions will introduce you to specialist jeweller's wax to scrape, file, drill, sand and shape your own unique carved ring. Your design will then be cast in silver – a true 'one off' as once the wax is melted the mould is lost. In the final session you will learn how to finish your casting resulting in a distinct piece of jewellery.

WHEN WEDNESDAYS  
6.30 - 9PM

STARTS 28 MAR

LENGTH 3 WEEKS

COST \$150

CLASS 8 MAX

INCLUDES JEWELLERS WAX FOR CARVING. CASTING PRICE VARIES BETWEEN \$10 - \$60 DEPENDENT ON PIECE WEIGHT.



## INTAGLIO PRINT PLUS

### BETH SERJEANT

Learn intaglio with printmaking artist, Beth Serjeant. Touching on the primitive and the contemporary this project focused course will cover direct/relief printing such as zinc, wood and linocut as well as an introduction to etching, polymer plate intaglio and pronto plate. Work with expressive mark making through the versatile medium of print. Beth has worked as an artist in print and bookmaking for over 30 years having collaborated with many established New Zealand writers and exhibiting her work nationally and internationally. Suitable for all levels.

WHEN TUESDAYS  
10AM - 12PM

STARTS 6 MAR

LENGTH 6 WEEKS

COST \$200

CLASS 6 MAX

MATERIALS NOT INCLUDED



# KIDS AND TEENS



**TEEN WORKSHOP**

TANJA NOLA

Immerse yourself in the practice of art making and art thinking where the focus is on developing ideas through practical exploration of media and techniques. In an art studio environment students work progressively towards their own visual language while learning drawing, painting, print making, ceramics and 3D construction skills to support their ideas. Designed to allow students to discover their potential and build confidence by encouraging experimentation and independent thinking, this course is for students wanting to develop their art making and a great bridge for those considering further education in the visual arts.

AGE YEAR 9 UPWARDS  
 WHEN THURSDAYS  
 4 - 6.00PM  
 STARTS 15 FEB  
 LENGTH 7 WEEKS  
 COST \$225  
 CLASS 8 MAX  
 INCLUDES ALL MATERIALS

**DESIGN YOUR OWN BOARD**

LUCIE BLAZE

Design and create your own unique, rideable skateboard. This hands-on course encourages imagination and creativity in designing a one-off art piece that you can ride or hang. You will explore different design techniques working with skateboard decks. All designed boards will be protected by a clear coat and ready to ride. You'll get messy so wear some old clothes!

AGE 8 TO 14  
 WHEN SAT 17 & SAT 24 MAR  
 10AM - 1PM  
 COST \$90  
 CLASS 12 MAX  
 INCLUDES ALL MATERIALS



**IMAGINATIVE WORLDS**  
**SOPHIE WATSON**

Learn observational drawing techniques to create fictional worlds. Explore the foundations of drawing such as line, form, perspective, figures, texture and tones then incorporate them into creative projects. Using different artist models each week, students will be guided through exercises working towards a tool box of techniques to continue their practice.

AGE 7 TO 12  
 WHEN TUESDAYS  
 4 - 5.30PM  
 STARTS 13 FEB  
 LENGTH 6 WEEKS  
 COST \$155  
 CLASS 10 MAX  
 INCLUDES ALL MATERIALS



**PRANCING PANTHERS**  
**KAIRAVA GULLATZ**

Time to get your hands full of clay when you shape your favourite animal! What is its state of action? Crouching, munching, dancing or prancing? You will enjoy your creativity and explore a variety of pottery techniques, which will help you to realize your unique designs in clay.

AGE 6 TO 14  
 WHEN WEDNESDAYS  
 4 - 5.30PM  
 STARTS 28 FEB  
 LENGTH 6 WEEKS  
 COST \$180  
 CLASS 12 MAX  
 INCLUDES ALL MATERIALS & FIRINGS



# SCHOOL HOLIDAYS





## ANIMATED POETRY

MARTIN SERCOMBE

—  
Create animated visual poetry combining spoken word and 2D animation in this fun, two day course. Write and record short poems then animate them using drawing, collage, cut outs, coloured pens and stop frame software. A downloadable link to the finished animations will be emailed to participants after the course.

AGE 6 TO 12  
WHEN MON 15 & TUES 16  
JAN  
10AM - 2PM  
COST \$120  
CLASS 12 MAX  
INCLUDES ALL MATERIALS  
AND EQUIPMENT



## STENCIL BOARDS

CHARLOTTE

MAGUIRE  
—  
Taking inspiration from the stencil artists, Banksy and Swoon and Flox, you will create your own stencils and use them to design and spray your own artwork on a plywood panel. Over two days you will be guided through techniques for drawing, blocking out, cutting and spray painting your own stencil design.

AGE 7 TO 14  
WHEN THURS 18 & FRI 19  
JAN  
10AM - 2PM  
COST \$125  
CLASS 12 MAX  
INCLUDES ALL MATERIALS



## WATERCOLOUR

STORIES

CHARLOTTE  
MAGUIRE  
—  
Create a unique picture book, zine, comic or graphic novel with your own artworks and original story. Bringing together writing and watercolour, inks and markers students will create their own characters, placing them in a setting and building a story around them. Your focus will be on building narrative for your artworks that will see you finish this class with a completed image based book.

AGE 6 TO 12  
WHEN MON 22 & TUES 23  
JAN  
10AM - 2PM  
COST \$125  
CLASS 12 MAX  
INCLUDES ALL MATERIALS



## BESIDE THE RIVER BLUE

### JACK TILSON

---

Wander through imaginary landscapes exploring new territories whilst developing a narrative through natural settings. Make vessels and sculptures from a landscape of your own imagining inventing characters and creatures to inhabit it. Experiment with local clay and try your hand at turning this wild material into both art and things to use at home. Apply your imagination to different making methods such as hand-building and wheel throwing.

AGE 7 TO 13  
 WHEN TUES 23, WED 24 & THURS 25 JAN  
 10AM - 2PM  
 COST \$160  
 CLASS 12 MAX  
 INCLUDES ALL MATERIALS AND FIRINGS



## TERRIFIC TEAPOTS

### KAIRAVA GULLATZ

---

Come along to make an original and unusual, fully functional tea pot in this creative pottery class. There are hardly any limits for your creative ideas. After a brain storming and designing the tea pots on paper, you will shape the soft white tableware clay with your hands, learning about sculpting techniques in an informal way. Later we will decorate our vessels with 3D applications and colourful patterns. A pottery wheel is available to enjoy throwing small vessels too. Everything will be glazed and fired so you can have a tea party at home with your friends.

AGE 6 TO 12  
 WHEN MON 15 & TUES 16 JAN  
 10AM - 2PM  
 COST \$125  
 CLASS 12 MAX  
 INCLUDES ALL MATERIALS AND FIRINGS



**DAWN CHORUS**  
**KAIRAVA GULLATZ**

This 'hands on soft clay' class is about shaping soft clay into a choir of birds forming a wall installation or garden sculpture. Listen to your inner artist and enjoy realising your fabulous ideas in clay. You will learn about modelling techniques and how to decorate your birds with colourful slips. 3D applications of wings and feathers will be attached to make the birds even more stunning. Also there will be time for you to use a pottery wheel to throw a small vessel.

AGE 7 TO 14  
 WHEN WED 17 & THURS 18 JAN  
 10AM - 2PM  
 COST \$125  
 CLASS 12 MAX  
 INCLUDES ALL MATERIALS AND FIRINGS



**WHO AM I?**  
**KAIRAVA GULLATZ**

Make a portrait of yourself from soft white clay. And You can choose who you are today: maybe a tiger or a fairy, a Maori warrior or just the gorgeous you? After you have drawn your image on paper you will learn how to shape the soft material into a unique wall plaque. Colourful slips are waiting for you to paint your clay masks.

AGE 4 TO 7  
 WHEN FRI 19 JAN  
 10AM - 2PM  
 COST \$65  
 CLASS 12 MAX  
 INCLUDES ALL MATERIALS AND FIRINGS



## GIANT SQUID DESSERT BOWLS KAIRAVA GULLATZ

Anything unusual is good enough for our designs! We will make our very special dessert bowls from soft white clay. The vessels can be adorned with 3D applications, carvings and colourful decorations. During these two days you will learn how to realize your creative ideas in clay following demonstrations for hand-building techniques. A pottery wheel is available to enjoy throwing small vessels, too. Everything will be glazed and fired to make all works durable and usable.

AGE 6 TO 12  
WHEN MON 16 & TUES 17 APR  
10AM - 2PM  
COST \$125  
CLASS 12 MAX  
INCLUDES ALL MATERIALS AND FIRINGS



## INVENTOR'S CAKE PLATTER KAIRAVA GULLATZ

Here we go again! We are looking for children who love the unusual and would like to shape their unique platters from clay. Shapes and decorations are up to your artistic expression on the day. After brain storming and translating your ideas onto paper, you will learn about clay sculpting and decorating techniques. Also there will be time for you to use a pottery wheel to throw a small vessel.

AGE 6 TO 14  
WHEN WED 18 & THURS 19 APR  
10AM - 2PM  
COST \$65  
CLASS 12 MAX  
INCLUDES ALL MATERIALS AND FIRINGS



## BUZZ AND BUMBLE KAIRAVA GULLATZ

Choose your hero from the insect world for the day to make a small container for your treasures. We will use soft white clay to model our crawlies. After their shapes are finished we will have time to paint them with colourful slips. All treasure boxes will be fired and glazed to make them durable.

AGE 4 TO 7  
WHEN FRI 20 APR  
10AM - 2PM  
COST \$65  
CLASS 12 MAX  
INCLUDES ALL MATERIALS AND FIRINGS



# BOOKING INFORMATION

## REGISTRATION

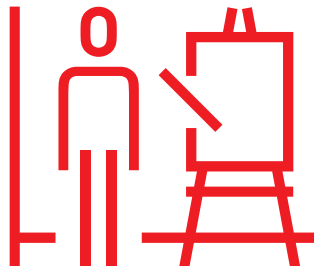
—  
Please contact Studio One Toi Tū and quote the course number. Payment must be made in full prior to the course start date to confirm a booking. Payments can be made by post, by phone or in person at 1 Ponsonby Road. We accept payment by cash, eftpos, cheque and credit card.

## REFUNDS

—  
If you cancel your enrolment, you must let us know at least three working days before the class starts in order to receive a refund. A \$20 cancellation fee will be incurred. Payments will be refunded in full if we cancel the course. We endeavour to notify you of any changes to course scheduling immediately. Refunds take approximately 10 working days to process.

## SCHOOL HOLIDAY COURSES

—  
Please wear an art shirt and bring a snack and/or lunch to class. Finished pottery from holiday classes will be available to pick up from Studio One Toi Tū approximately four weeks after the class finishes. Please understand even with the most careful handling, in some cases a child's work may break when kiln-fired. In the event this happens, we will do everything we can to repair your creation.





# HI RE



## GALLERIES

---

### CALL FOR PROPOSALS

—

### EXHIBITIONS

—

Proposals for our four ground floor galleries are accepted annually via an online application process. The next call for proposals will open in June 2018 for exhibitions in 2019.

We have an impressive selection of exhibitions in our four gallery spaces programmed throughout the year. Bookings for the galleries can be made by submitting an exhibition proposal. Contact us for more information about our galleries and keep up to date with our current exhibitions at [Facebook.com/StudioOneToiTu](https://www.facebook.com/StudioOneToiTu).



## ROOMS AND EVENT SPACE

---

Studio One Toi Tū has a variety of adaptable indoor and outdoor spaces to meet your needs, bring your idea to life and open your event to the community. Whether you're a designer looking for a space to show your latest collection, a book group seeking a central meeting place, or if you are looking for something more exciting we have the space for you.

### BOOK ONLINE

---

### VENUE HIRE

---

To find out how we can support you, visit our online bookings page at [bookings.aucklandcouncil.govt.nz/facility/studio-one-toi-tu](https://bookings.aucklandcouncil.govt.nz/facility/studio-one-toi-tu)



## STUDIO HIRE

---

A range of studio hire options are available at the Studio One Toi Tū precinct. Studio One Toi Tū is a hub for creatives and community activities, where designers, writers, artists, performers, musicians and other creative people can make and collaborate. We have a range of studio options and are one of the few precincts in Auckland to offer access to a 'dirty' workshop suitable for ceramicists, sculptors and object makers. We also offer a number of open studio spaces that can be hired individually or collectively for making, meetings, workshops or temporary events.

We are located in the heart of central Auckland with free wi-fi, kitchen facilities and the possibility for 24 hour access. Call us on 09 376 3221 to find out how we can support you.

# MAPS

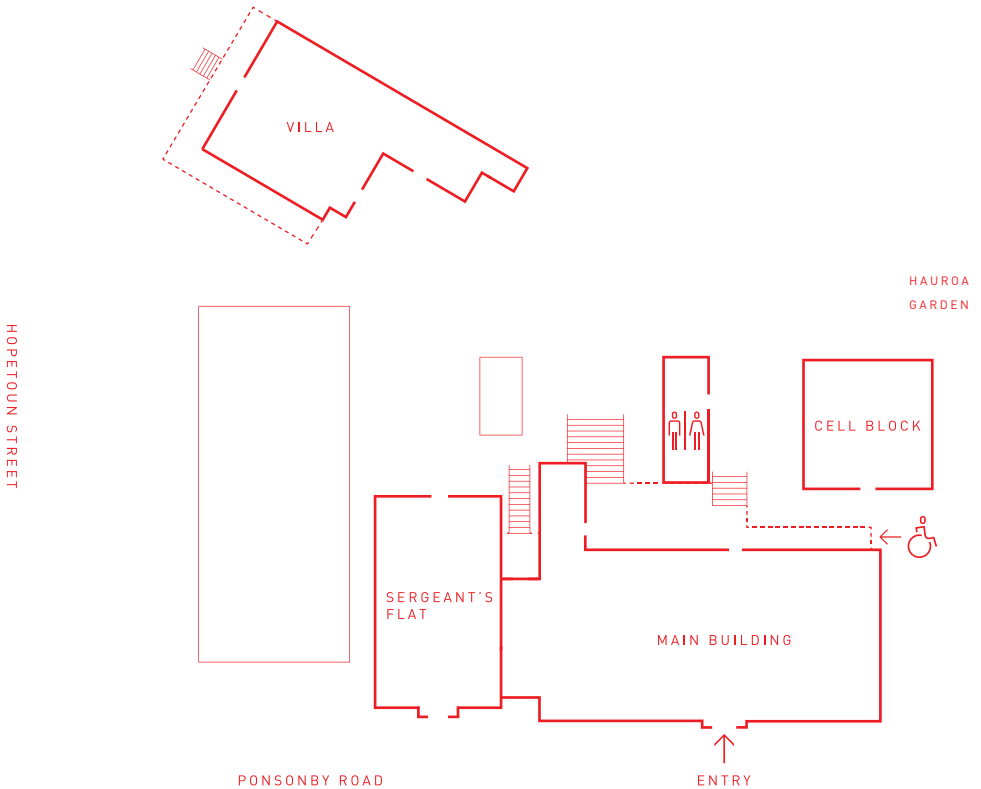




# STUDIO ONE TOI TŪ PRECINCT

## ACCESS

The main entrance to Studio One Toi Tū is at 1 Ponsonby Road. Disabled access is to the rear of the main building through the gates and down the driveway.



# VILLA STUDIOS

## ROOM 12

### WORKSHOP

For sculptural practices such as ceramics, objectmakers and carvers we offer a dedicated teaching and workshop space for your practice. If you are interested in hiring this room, please email us for a full equipment list.

### KILN HIRE

Studio One Toi Tū has two kilns for bisque and glaze firing. These can be hired out for individuals or community groups for the firing or their own ceramic works. Please contact us for more information.

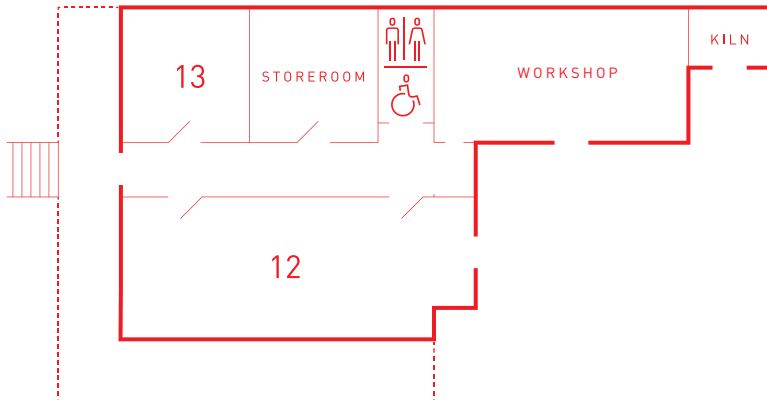
## ROOM 13

### SHARED STUDIO

Residents of this shared studio space have access to the storeroom, Room 12 and the machinery shop. Residents can also book additional workshop and kiln time (at current charges) when not in use by scheduled classes. Residents will be able to locate their own equipment in the shared machinery shop.

### DIMENSIONS :

13 3785mm x 3595mm



# GROUND

## GALLERIES 1 - 4

Four hireable galleries including three rooms and one corridor gallery can be hired individually or combined for larger exhibitions.

### DIMENSIONS:

- 1 6700mm x 1260mm
- 2 4235mm x 4260mm
- 3 4235mm x 4260mm
- 4 4200mm x 4260mm

## ROOMS 5 - 6

These spaces are suitable for 'clean' activities that are easily packed in/out.

### DIMENSIONS:

- 5 8700mm x 4300mm
- 6 5900mm x 4200mm

### CLASS SIZES:

- 5 Up to twenty people table-seated; more if lecture style.
- 6 Up to twelve people table-seated; more if lecture style.

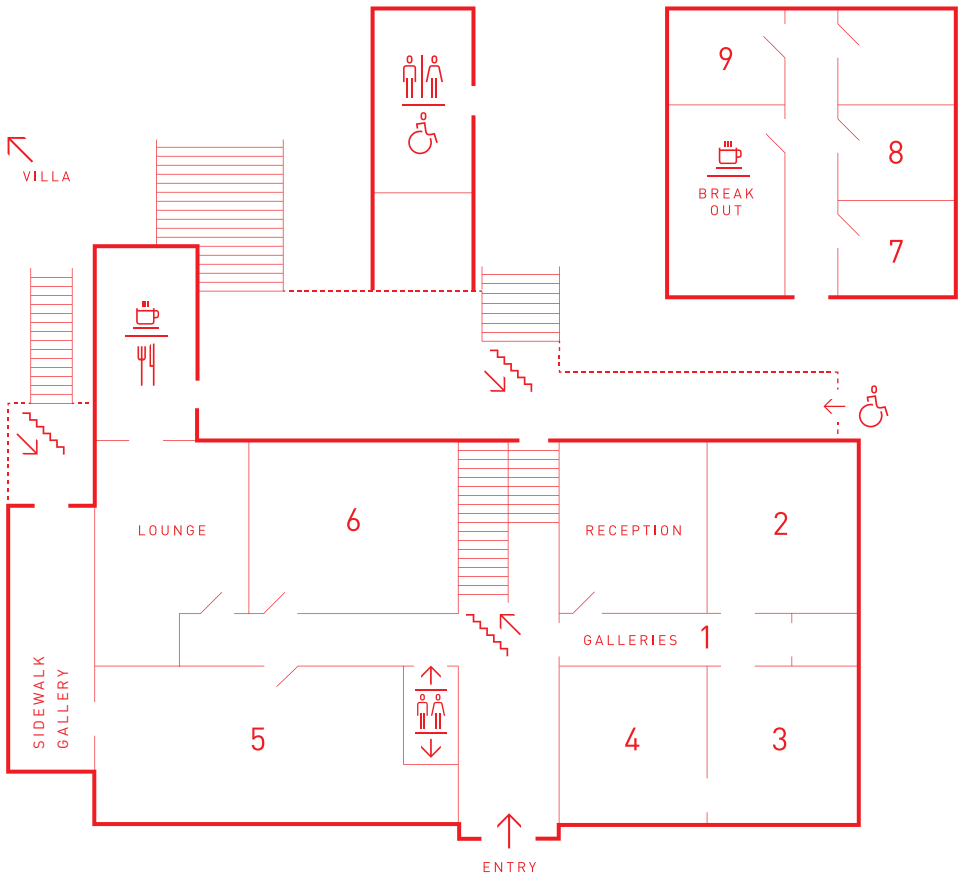
## ROOMS 7 - 9

Three studio spaces. Note: the cell block also contains the following:

- One shared break-out space for all residents' use.
- One exhibition space for all residents' use.

### DIMENSIONS:

- 7 2300mm x 2770mm
- 8 2300mm x 2770mm
- 9 2300mm x 2770mm



# LEVEL ONE

## ROOM 10

This well-lit space is the largest of Studio One Toi Tū's three studio spaces and will suit creative practices with limited mess, conferences and connector events. A high definition projector, wide screen and sound system are also available for private film screenings and public talks. This space can be hired throughout the year either as a whole for exhibitions, events or as a shared studio for up to twelve residents.

### DIMENSIONS:

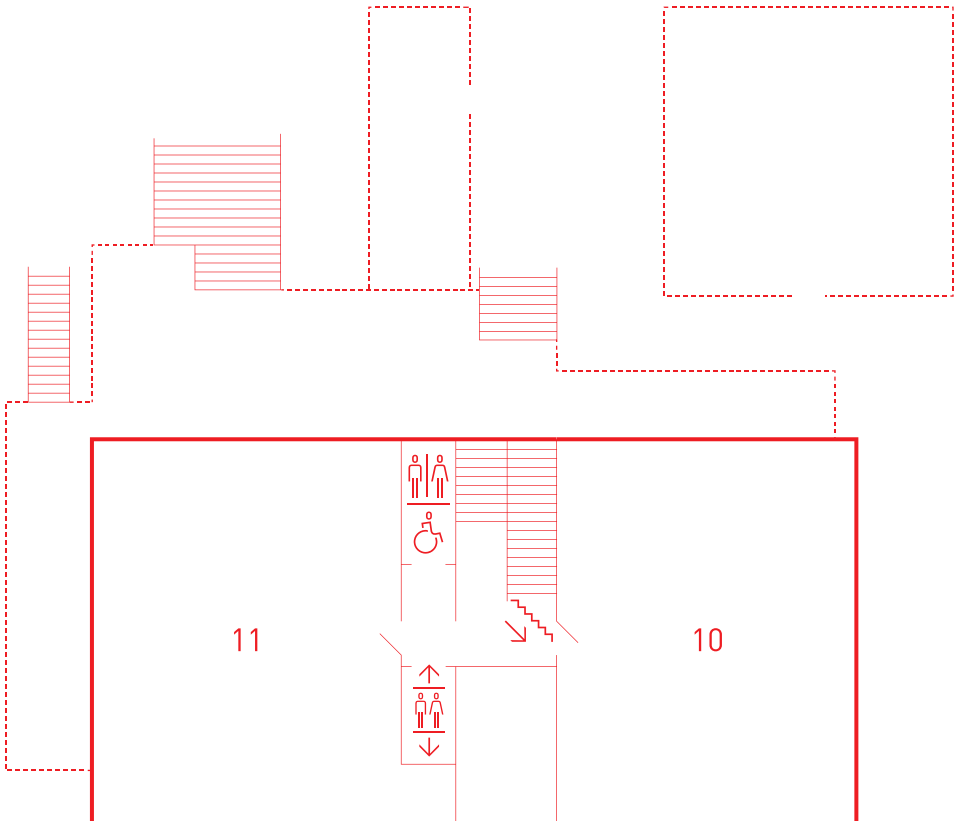
10 10300mm x 8586mm

## ROOM 11

For practitioners looking for dedicated teaching space this room supports multi-use activities such as painting, print, etc. Studio One Toi Tū provides equipment such as easels, painting boards and a print roller. If you are interested in hiring this space, please contact us for an equipment list.

### DIMENSIONS:

11 10300mm x 7260mm



## VENUE HIRE

We offer a range of room hire options available at an hourly rate. Come in to view and discuss how we can assist you to find a space that suits your needs, we are always happy to show you around.

### ROOM 5

—

A versatile meeting, workshop and function room with heating and air conditioning.

### ROOM 6

—

A sunny versatile meeting, workshop and function room with views onto the rear deck.

### ROOM 10

—

A large clean studio with options. It can be hired as a shared studio, a rehearsal room, for conferences, seminars, workshops, pop-up exhibitions, film screenings, book launches and more. This space can be booked hourly or weekly with possibilities to hire additional rooms as break-out space.

### ROOM 11

—

Dedicated art workshop set up to accommodate visual art practices. This workshop can be hired in its entirety at an hourly, daily or half daily rate.

### ROOM 12

—

Dedicated art workshop set up to accommodate sculpture practices. This workshop can be hired in its entirety at an hourly, daily or half daily rate.

## STUDIO HIRE

### THE CELL BLOCK STUDIOS

—

The Cell Block studio spaces are private studios available for hire at a rate of \$78 per week. It comes with 24 hour access and is hired on a monthly basis.

### VILLA STUDIOS

—

A 'dirty' shared studio space with access to the sculpture workshop, kiln and prep room and is available for hire at a rate of \$78 per week. It comes with 24 hour access and is hired on a monthly basis.

### STUDIO ONE TOI TŪ GALLERY

—

Our four gallery spaces are available for hire by submitting a proposal through our annual call for proposals. Each gallery is booked in four week exhibition periods for \$330 with a discount for multiple gallery hire available. Along with the hire we will promote your exhibition through our media networks and programme.

Contact Studio One Toi Tū to find out more about our studio and gallery hire options and availability.

# STUDIO ONE — TOITŪ

STUDIOONE.ORG.NZ

## OPENING HOURS

—

### All spaces

|           |           |
|-----------|-----------|
| Mon – Thu | 9am – 7pm |
| Fri       | 9am – 5pm |
| Sat       | 9am – 4pm |

—

### Residents

24/7 access

## ACCESS

—

All rooms and galleries  
are wheelchair accessible.

## LOCATION

—

1 Ponsonby Road  
Auckland, New Zealand

## CONTACT

—

09 376 3221  
info@studioone.org.nz  
studioone.org.nz

facebook.com/studioonetoitu  
instagram.com/StudioOne.ToiTu

#VISITCREATEMAKE  
#HIREPLAYSHOW  
#STUDIOONETOITU